

SIGNAL ARTIST SHOW CASE



Vital Illusion by Rhoda Cunningham



Floating World 7 by Emma Coyle



Photography by sunbeam house



"Jerry Fish and the Mudbug club" opening Sarah Varian's exhibition. Also staff artist Erika Doyle.



Children's art classes.



SIGNAL ARTS CENTRE

Volume 3

NEWSLETTER

issue 1



Collared Love by Iona Madden

Board of directors 2005

James Morrison	Chairperson
Eleanor Philips	Secretary
Michelle Fullam	
Pat Burns	
Colum O`Neill	
Linda O`Neill	
Yanny Peters	
Doug Ross	
Blaithin O`Brien	

Staff members

Claire Flood	Supervisor
Maria Nolan	
Johannes DeGroot	
Oonagh Donnelly	
Monica Grossman	
Gavin McCabe	
Greg Murray	
Davnat O`Reilly	
Eleanor Phillips	
Sonia Haccius	
Joan Quinn	
Coilin Rush	
William Slattery	
Maura Ryan	
Filip Servit	

Signal Art Centre is represented on the following:

Bray Partnership
Wicklow Arts Networks
Wicklow Community Platform

Signal Arts Centre
1 Albert avenue
Bray
Co. Wicklow

Tel:01 2762039
Fax:01 2869982
Email: signalartscentre@eircom.net

Office Hours
9.30 - 1.00pm
2.00 - 5.00pm
Monday to Friday

Gallery Hours
10.00 - 1.00pm
2.00 - 5.00pm
Monday to Saturday

CONTENTS

	Page no.
Editorial	1
Sarah Varian's exhibition	2
Collared Love	3
Artist in residence scheme	"
A note from Pam	"
What's on in Signal	4
Marino Arts project	6
Peer Gynt competition	"
Children's Art Classes	7
Opportunities	8
Signal Staff Profile	9

Newest Society Members

- Alan Doyle - Potter
- Des McAllister - Artist
- Greg Murray - Artist
- Johannes DeGroot - Artist
- Stephen McKee - Artist
- Helen Pullen - Artist



Maura has studied a FETAC Award in art, ceramics, craft and design from St. Thomas's college in Bray. She also completed a course in person centered art therapy in Crawley College and also Speech and Drama in Emerson College, in Sussex, U.K. She has taught arts and crafts to young children during her time as a kinder garden teacher. Maura is currently teaching ceramics to adults in Signal, she has also done Batik.



Johannes DeGroot: Jan studied print in NCAD and was a reggae DJ in many of Dublin's nightclubs. He joined Signal in May of this year and is currently working on a large mural project with the Bray Addiction team. He is also helping to run Life Drawing and Children's Art Classes in Signal.



Oonagh Donnelly: Oonagh studied (Design) Visual Communications in College of Marketing and Design, Mountjoy Square. She joined Signal in May of this year. Whilst on staff she has been designing and developing a new logo and 'corporate' look for Signal. She also runs workshops for the Clients of Rehab.



Monica Grossman: Monica studied Furniture Design in Bray Community College, specialising in stained glass. Monica also joined Signal this year and has been involved in many projects. Currently she is working within Signal on the Children's Art Classes which are held twice a week.



Gavin McCabe: Gavin has been working in Signal since 2004 and is an accomplished musician and writer. Gavin looks after the press releases for each exhibition in Signal, assisting exhibiting artists to write up the dreaded Artists Statement. Gavin has preformed on fundraiser's for Signal and has recorded an album of his own work.



Greg Murray: Greg worked for many years in the highly competitive world of advertising. He is an accomplished graphic designer and portraitist. He joined Signal in 2005 and has worked on a number of Signal's community summer school projects. Currently he is working on the Children's Art Classes and has worked on the Ravenswell Summer School and Bray School Project.



Sonia Haccius: Sonia studied in Middlesex University London and went on to get an MA in Theatre Design from the Slade School of Art in London. She is an accomplished set designer and has worked on a number of sets for theatre and for RTE. While in Signal she has worked on a number of projects including our community summer school outreach programs.



Joan Quinn: Joan studied computer aided graphic design in Bray Community College and joined Signal in September 2005. Since joining Signal she has helped to develop the new Signal Arts Society Newsletter.



Coilin Rush: Coilin studied Fine Art, Painting, in NCAD. He has been working in Signal since October 2004. Whilst in Signal he has worked on a large variety of community projects, including the summer school's programs. Currently he is working with the Clients of Rehab. Coilin is interested in starting a painting class for adults; please contact centre.



William Slattery: William has been a staff member since 2004. William has worked on a number of projects in Signal including a mosaic project with children in The Ark in Temple Bar. He has done extensive work with Marino School and they are so delighted with the work he has done there that they have requested him to work again with them throughout this term year.



Maria Nolan: Maria has been in Signal since 2003 and has one of the most important jobs in the Centre. She looks after the accounts!



Claire Flood: Claire is Signal's epicentre. She is the supervisor of the CE (community employment) project, administrator of everything else and knowledge base of all that happens. If there is anything you need to know she's the person to ask. She has been with Signal since 2002 and as well as working full time in Signal is also studying for a Degree in Community Development in Maynooth.

Opportunities

PROJECT 06: CALL FOR SUBMISSIONS

2006 will see a fully fledged and fully independent alternative program of arts events, entitled Project 06, which will take place in Galway during the Galway Arts Festival from 18 to 29 July. The program will reflect all art forms and types of performances, including some which have not been featured in the Arts Festival program in recent years. Project '06 will emphasise a more personal dimension in their events and infuse its events with fun, spontaneity and street activity. Artists and arts groups from anywhere are very welcome to participate. full Program and web site www.project06.com will be produced and a central Box Office will be operated by the Town Hall Theatre. Closing date for inclusion in the program is 1st May 2006.

2006 SUMMER WORKSHOPS IN TUSCANY

Sculpture and Landscape Painting.

July 2-15. Figure modeling and mould making. Instruction, room, board, studio space, and workshop materials are included.
July 16-29. Landscape painting. Instruction, room, board, and studio space are included.

Residential Sessions: June 18-July 1. A residential session for artists and art enthusiasts, during which only room, board, studio space, and minimal local transportation are provided. A second residential session in September will be added, if there is sufficient interest, for either the middle or final two weeks of the month.

Information and Availability: Pictures of the facilities and the program, location maps, and information on Pietrasanta and the Versilia area are at www.pontezingola.com. For reservations contact Craig Schaffer, program director, at 202-362-4507, or email craig321@earthlink.net

CALL FOR INTEREST: MA IN ARTS & HEALTH AT WIT (WATERFORD)

Waterford Institute of Technology is proposing to initiate the first Masters in Arts & Health in the Republic of Ireland. To progress this proposal, WIT is calling for an endorsement of interest from arts practitioners, arts managers and arts students. To respond to this call, please indicate the following details:

1. Area of work: Arts practitioner, Arts manager, Arts student, Other... please specify.
 2. Level of educational qualification.
 3. Area of interest for MA thesis.
- Please return to: Peter Jordon, Waterford Institute of Technology, College Street, Waterford. E: pjordan@wit.ie

CALLFORINTEREST:MAINARTSINCONTEXTATDIT

The Fine Art Department in the Dublin Institute of Technology is developing MA in Arts in Context. This new program is aimed at art practitioners who have a degree in Fine Art, Design, Architecture, Media, Music or Drama or already have an established arts practice and wish to develop the skills and competence's to work more effectively within a broader community context.

The MA Arts in Context will offer its participants opportunities to instigate and explore interdisciplinary projects within a new kind of field where ideas are drawn out of their traditional integument around particular traditions of arts practice and lines of thought. It is planned that the program will start in January 2007, running over 3 semesters.

Please email us (indicating your area of art practice; qualifications and area of interest).

For more info: Anita Groener, Head of Department of Fine Art; anita.groener@dit.ie
Patricia Hurl, MA Arts in Context Coordinator;
patricia.hurl@dit.ie T: +353 1 4024188

UNESCO-ASCHBERG RESIDENCIES

The UNESCO-Aschberg Bursaries for Artists program is offering residency opportunities in the fields of visual arts, music, dance, creative writing, performing arts and media arts. For 2006/2007 there are 67 fellowships offered by 47 partner institutions in 26 countries (however, some are restricted to applicants from certain countries only).

In general, return flights, accommodation and studio/work space are offered free of charge (the individual must provide his/her own health insurance). Unless otherwise specified by the host organisation: the deadline for applications is 30 April 2006; the dates of each individual residency are by mutual agreement and there is no maximum age for applicants. International Intelligence on Culture's Enquiry Service has produced a free fact sheet detailing the residencies open to candidates originating from the UK and Ireland - to receive a copy contact enquiry@intelculture.org / Tel: 0044 20 7403 7001.
Further Information www.unesco.org/culture/aschberg

COMMENT

Dear Members,

In this issue you will find enclosed your application form for this year's Signal Arts Society exhibition. Members can submit up to three images for selection in this years exhibition. Please quote sizes in millimetres and be aware that sales are subject to 15% commission. Don't forget the closing date as we can not accommodate late entries. Closing date: Friday 12th May.

Also in this issue we have members news, features, opportunities and the listings for the next three months. If you have any thing that you would like to see in the next news letter please do not hesitate to contact us, we can be contacted through the Signal Arts Centre, by phone or text 086-8319592 or email signalarts@gmail.com

We love feedback whether its good or bad, thank you to all the members who contacted us to tell us about all the problems with the last issue - sincerest apologies to Mairead O' Sheehan. We have changed printers and hopefully this will resolve all the problems.

Congratulations and our very best wishes to Signal Arts Society members Beatrice Stewart and Ilona Madden. (See inside).

Colum O' Neill

SCULPTURE IN CONTEXT 2006

Sculpture in Context 2006 will be held at the National Botanic Gardens, Glasnevin, Dublin. The dates of the exhibition have been provisionally fixed from 7th September to 20th October 2006. The Botanic Gardens offers a unique platform for artists to respond to a specific location. See entry form and conditions of entry on www.sculptureincontext.com. Proposals with entry forms and appropriate fee should reach Sculpture in Context, PO Box 10054, Dublin 16., on or before 21 April 2006. Sculpture in Context will allocate a number of awards to works of distinction.

A site visit is scheduled for Saturday 11th March 2006 at the National Botanic Gardens, Dublin, meeting inside the main gate at 11 am. To help with your proposal, this visit is recommended. If you cannot attend the site meeting you can visit the National Botanic Gardens at any time, admission is free. If you have any enquiries please telephone Beatrice at 01 2955225 or Ana at 087 6258258 or see the new Sculpture in Context web site at www.sculptureincontext.com.

HOME AGAIN

You are home again,
Home to the lakes
That gurgle with your slow laugh.
Home to the bogs
That hugged your back in labour.
Home to roads and bothrins
That twisted and turned,
As you pedalled with words in a bag.
Home to haughty mountains,
Beguiling hills.
Home to the stale pubs,
Where your accordion lifted
Sunlight,
From a stone floor.
Home to be laid to rest with your wife
Her tall dark and dangerously
Handsome man
Home from where your heart never traveled
Home as sweet as a ditch
Swollen in honey.

Mairead O'Sheehan

SIGNAL STAFF PROFILE



Filip Servit is an arts and crafts graduate. He joined signal in October of 2006. He is currently teaching the children's art classes in signal and also works on projects for the Marino school in Bray.



Pam Gallagher started sewing when she was four. Having been in the rag trade for many years she worked as a designer and wardrobe mistress in dry rain theatre group. Pam is currently teaching arts and crafts in N.L.N and is also working on a quilt celebrating the lives of traveler people with a group of traveler women.



Erika Doyle studied acting and drama for many years, both as an actor and working with children's theatre groups. She went on to study TV. Video and film production and has appeared in and worked on numerous short films, many of which has traveled to international film festivals. Today Erika is writing, acting and works as a staff artist here in signal.

Have you got news for us ?

WE WANT TO HE ABOUT EXHIBITIONS YOU ARE

HOLDING, IMAGES OF YOUR WORK, IN FACT

SEND US ANYTHING YOU THINK MIGHT

INTEREST OR AMUSE US!

SEND US YOUR STUFF YOUR
MAGAZINE NEEDS YOU!

Sarah Varian's Exhibition

Varian is a marine biologist and underwater photographer who has worked extensively throughout the world and is now devoting her time to promoting awareness of Ireland's marine environments. With this show she has gone some way to achieving this aim. Its true that not all the images shown are from Irish waters but it is an interesting exercise to view the show with the accompanying catalogue and guess which images were taken in Irish locations and which images were not. The exhibition consists of photographs of different sizes mounted on foam board. Most of the images are of marine life of some description. Others are of human inhabitants and some are completely abstracted which makes for a nice counterbalance to the show's main theme.

Varian clearly has an eye for a shot and technically the work is very well produced. I imagine that underwater photography brings its own complications to bear on what is already quite a laboriously technical activity. As with all photography one good shot from thirty is a good average, even for the most talented of photographers. So what you see is almost always the tip of the iceberg as regards actual work. The compositions show great variety. From ghostly allusions to the depth and distance that is conveyed in a massive body of water to flat shots of repetitive patterns that reduce the pictorial depth to two dimensions in favour of abstraction. A few pieces transgress the documentary aspect of many of the pieces displayed. The strongest of which is called 'acoustic mystery', an unfortunate name for a truly great photograph. In the foreground there is a jellyfish in relatively sharp focus and detail. Behind that is an ethereal outline of a figure out of focus and almost translucent. It's an easy guess that the aforementioned figure is a dolphin but its not so immediately obvious that it reduces the image's mystery. There is an interesting fade and dispersal of light surrounding the figure that seems to match the quality of its ghostly presence. This is without doubt the strongest image in

the show. However there are others that seem strangely pregnant with the same kind of otherworldly potential. 'Special species' is one such piece. It shows a diver in silhouette surfacing. The absence of a belt and tank tells us that this is a free diver or snorkeler. The image is reduced to duo tone because of the silhouette. Its sister image 'Croatian reflections' mirrors its composition and colour with the hull of a boat and a coral wall vying for our attention. 'Tongan tunnel' treads similar territory.

There are little or no negative things to say about this show. Whether through processing or printing some of the prints have suffered a sort of staggered finish of line that occurs with medium resolution digital rendering. There are two prints 'Maerl mix' and 'Coralline agal mix' which indulge in digital manipulations displayed alongside their source images. The results are largely unsuccessful and entirely unnecessary. Having said that they do not jar when seen next to unaltered prints. It is only on closer inspection that they begin to fail. Overall this show is well worth a look. Varian is a rarity in that she is a scientist with a genuinely accomplished sense of the visual. The combination is very appealing and also for this reason the show has a dual appeal. It is enjoyable and educational.

By Coilin Rush



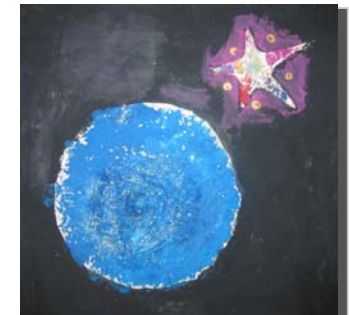
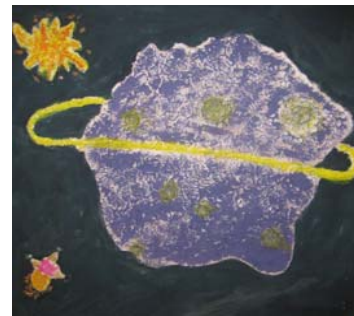
CHILDREN'S ART CLASSES



Creating your own planet:

The idea for the children was to use their imagination and create their very own planets in an imaginative space. To make it look like real deep space we used paper mache on board to give our planets and their surrounding objects a 3D effect, accentuated by the dark background. There were no limitations on shapes, colours or landscape features, so we ended up with some volcanoes, craters and mountains, spaceships and meteors, everything done in mad colours. All of this reflecting a sense of what it might look like out there in space and the immense vastness of the universe. (if we only knew!).

By Monica Grossman



MARINO ARTS PROJECT

William Slattery is the mosaic man, he did some "tiling" on Signal Arts Centre walls, so there was no surprise, when he started close cooperation with Marino School in Bray one year ago. And of course, it were mosaics he worked on.

After last year highly successful cooperation William was requested back to do more "arts, mosaics and other stuff". And not only him, personal of this institution would like to do some murals, on two years old, but already really ugly looking wall, which you can see, when entering the school. So other Signal Arts Centre artist was put in place and now works in union with all involved in this project. From the beginning this mural looked like a simple thing: just throw some paint on the wall and let the kids do whatever they want to do. But then our mural artist saw wheel chair paintings done by the Marino children and all plans were swiftly blown away. Those are the colours and artistic expression, which should be outside! Under influence of this

experience and with more and more time spent inside Marino school with staff members and - first of all - kids, both projects, William's mosaics and ceramics and Filip's



murals, getting more and more inter connected... Now we are talking not only about separate things, but about one big project. And not only about mosaics and murals but there are some other possibilities as well, for example project involving six schools from six other countries, such as Turkey, Czech Republic, Germany, Sweden. There were some brainstorming sessions and the last idea is... Well let's see. There is time, when we can talk about ideas and there is a time, when we better stay quiet for a while and let ideas work inside our imaginative minds. And this is exactly Marino school case.

By Filip Servit

Signal Arts Society member short listed for Peer Gynt Competition.

Selvaag Gruppen will be installing a total of 30 sculptures on the theme of Peer Gynt at various locations throughout the Løren district of Oslo during this Ibsen Centenary year.

Seven first-phase winners have been chosen. Their names will be announced later, when the sculptures have been purchased. The individual pieces will be put in place during the second half of 2006.

This international competition, expected to run for several years, has attracted 52 international artists from 10 countries to submit more than 100 sketches depicting scenes from the play "Peer Gynt".

Three sculptures have already been commissioned. The sculptures will be placed at Løren in Oslo during the commemoration of Ibsen in 2006. The three commissioned sculptures will be carved by Elena Engelsen/Per Ung, Jim Dine and Enzo Cucchi.

In Oslo the internationally famous Norwegian artists Munch and Vigeland are honoured with the Munch Museum and the Vigeland Park. The writer Henrik Ibsen is also world famous, but there are few monumental depictions of his works. The Selvaag Group decided to commemorate Ibsen by decorating Oslo's new residential district, Løren, with scenes from his play "Peer Gynt".

For further information please contact Ole Gunnar Selvaag or Marit Albertsen, tel: +47 23 13 71 08

Congratulations to Signal Arts Society member Beatrice Stewart who has been short listed for this competition. We wish her the very best of luck.

Colum O' Neill

COLLARED LOVE

AN EXHIBITION OF WORKS BY ILONA MADDEN

"Collared Love" is Ilona Madden's first solo show in the Signal Arts Gallery in Bray. It opens on the 20th June and runs until 1st July 2006. The official opening is on Thursday 22nd June from 7-9pm and will be launched by artist Cora Cummins.

Ilona started using her dogs as models for drawings about a year and a half ago, when she realised that they were ideal models. Since then she has been experimenting not just with hundreds of different drawings, but also some painting, video and photographs.

Ilona describes her work as experimental and spontaneous. She is happy to leave the obvious traces of the creative working and thinking process visible to the viewer.

These charcoal, pencil, and ink drawings, the mixed media collages, photographs, oil paintings and videos display the joyful, playful and intimate relationship that Ilona experiences with her subject matter.

However, Ilona also poses the question as to whether she could have produced the same body of work had she not felt so passionate about her subject matter and whether it is possible to look at the work independently from the actual image of "a dog".

Therefore, "Collared Love" not only captures the dogs themselves and Ilona's relationship with them, but it is about the creative process in general. It offers much to enjoy whether you are a dog lover or not.

We wish Signal Arts Society member Ilona the very best of luck with this exhibition and look forward to meeting you all at the opening.



WICKLOW CO.CO ARTIST IN RESIDENCE SCHEME

Wicklow County Council invites applications from arts practitioners in collaboration with any of the following groups for the Artist in Residence Scheme 2006-2007:

- Community & Youth groups
- Hospitals,
- Day Care Centres
- Retirement homes
- Detention Centre
- Amateur art groups
- Schools

The purpose of this Scheme is to encourage intensive collaboration between groups and artists. The focus of the collaboration must be a particular project in which artist and the participants work together to realise some artistic object or event. The fee to the successful artist from the local Authority is €2,700.

Host organisations must provide materials as a contribution to the Residency. Deadline for receipt of applications: Thursday 6th April 2006.

Further information is available from Wicklow County

A NOTE FROM PAM

Pamela Gallagher started sewing when she was four. Having been in the rag trade for many years, she worked as a designer and wardrobe mistress in dry rain theatre group and has great memories of her time there. Trained to work with people needing extra care, she's been teaching arts and crafts in N.L.N. for three years now and loves it. She is also working on a quilt celebrating the lives of traveling people with a group of traveler women. She makes fabric pictures personally and group banners and flags. Her fair trade flag can be seen in the Greystones St. Patrick's day parade.

By Pamela Gallagher



SIGNAL ARTS CENTRE

Winter/Spring 2006 gallery program

MARCH - APRIL

SHADES OF ENIGMA

AN EXHIBITION OF PHOTOGRAPHY BY
SUNBEAM HOUSE SERVICES
From Tuesday 14th March - Saturday 25th March
2006
Opening Reception: Thursday 16th March 7-9pm.

VITAL ILLUSION

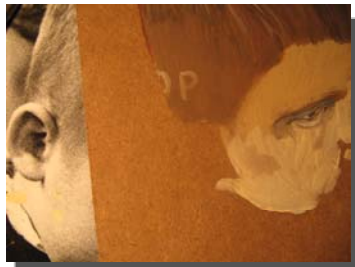
AN EXHIBITION OF PHOTOGRAPHIC ART BY
RHODA CUNNINGHAM
From Tuesday 28th March - Saturday 8th April
2006
Opening Reception: Thursday 30th March 7-9pm.

AS THE SHADOWS

AN EXHIBITION OF PAINTINGS BY JAMES
O'DOWD
From Tuesday 11th April - Saturday 22nd April
2006
Opening Reception: Thursday 13th April 7-9pm.

MANIFESTATION

AN EXHIBITION OF DRAWING AND PAINTINGS
BY PAUL MC CANN
From Tuesday 25th April - Saturday 6th
May 2006
Opening Reception: Friday 28th April 7-9pm.



Front by Paul Mc Cann

MAY - JUNE

HAVE YOU SEEN THE HORIZON LATELY?

AN EXHIBITION OF PAINTINGS
PHOTOGRAPHIC WORK AND INSTALLATION
BY SARAH MAHER
From Tuesday 9th May - Saturday 20th
May 2006
Opening Reception: Friday 12th May 7-9pm.

CONTEMPORARY PRODUCTIONS

AN EXHIBITION OF PAINTINGS BY EMMA
COYLE
From Tuesday 23rd May - Saturday 3rd
June 2006
Opening Reception: Friday 26th May 7-9pm.

Wicklow 400 people and places

AN EXHIBITION OF PHOTOGRAPHY BY THE
BRAY CAMERA CLUB
From Tuesday 6th June - Saturday 17th
June 2006
Opening Reception: Thursday 8th June 7-9pm.



Floating World 8 by Emma Coyle



Whiffle by Rhoda Cunningham



Umbra by Rhoda Cunningham



Photography by Sunbeam House



CHILDREN'S ART CLASSES



(8 WEEKS)

Wednesdays: 26th April '06 - 21st June

Thursdays: 27th April '06 - 22nd June

Please contact the centre for
information and bookings.
Ph: 01 2762039

