



SIGNAL ARTS CENTRE

Volume 3

NEWSLETTER

Jan - March '07



Above Paintings by Frankie Gallagher.

BOARD OF DIRECTORS 2005

James Morrison (Chairperson)
Eleanor Philips (Secretary)
Michelle Fullam
Pat Burns
Colum O'Neill
Linda O'Neill
Yanny Peters
Doug Ross
Blaithin O'Brien

STAFF MEMBERS

Claire Flood (Supervisor)
Karen Luby
Aisling Leonard
Erika Doyle
Davnat O'Reilly
Johannes DeGroot
Oonagh Donnelly
Monica Grossman
Greg Murray
Anne Power
Sarah Morshead
Sonia Haccius
Joan Quinn
William Slattery
Maura Ryan
Filip Servit

Signal Art Centre is represented on the following: Bray Partnership,
Wicklow Arts Networks, Wicklow Community Platform.

Signal Arts Centre
1 Albert avenue
Bray
Co. Wicklow

Tel: 01 2762039
Fax: 01 2869982
Email: signalartscentre@eircom.net
Contact Signal Arts Society: signalarts@gmail.com

OFFICE HOURS

9.30 - 1.00 p.m.
2.00 - 5.00 p.m.
Monday to Friday

GALLERY HOURS

Tuesday to Friday: 10.00 - 1.00 p.m. 2.00 - 5.00 p.m.
Saturday and Sunday: 12.00 - 5.00 p.m.

CONTENTS

	Page no.
Editorial	1
Changes to Newsletter	"
Bray Arts Club	2
Toys for Big Boys	"
Exhibition Reviews	3
What's on in Signal	4
Interviews: Frankie Gallagher Cabrini Lynch Kate Minnock Ray Corcoran	6
Artist in the Community	7
The Ceramics Class	"
Childrens Classes	8
Signal Staff Profile	9
Signals Location	10

BENEFITS OF MEMBERSHIP

You may not remember all the benefits of membership enjoyed by members of the Signal Arts Society which are printed on the Application Form so here is a little reminder.

- All members are entitled to reduced commission on any works sold through the centre - either in exhibitions, Meitheals or the Annual Members Show.
- All members are entitled to a discount on works purchased at the Signal Arts Centre.
- All members are entitled to reduced rates when using the facilities at the Signal Arts Centre, including the use of the kiln, pottery room and darkroom facilities.
- All members are invited to the opening of every exhibition and any other special events organised at the centre.
- All members are invited to the Christmas Party.
- All members are invited to participate in the Annual Members Exhibition.
- All members will receive a copy of the Quarterly Newsletter.
- All members are entitled to partake in the Discount Scheme.
- All members will be invited to the periodic members meetings.

If you have any queries about members benefits please do not hesitate to contact any of the committee members.

COMMENT

Welcome to the last Newsletter of 2006. How fast has this year passed? Seems like only yesterday I was wishing you all a happy Christmas.

This has been another very busy year for the Society. We had another very successful Exhibition, a huge growth in the membership and the first and second members meetings.

You will also have noticed changes within the newsletter - most credit for this is due to the efforts of Joan Quinn who has put a phenomenal effort into restyling and designing the new format. We now have a new committee dedicated to the newsletter (see separate article).

I look forward to meeting you all at the Christmas Party (see separate article), but if I don't see you on behalf of the staff and management of the Signal Arts Centre I would like to wish you all a Merry Christmas and a happy and prosperous New Year.

Colum O' Neill

CHANGES TO THE NEWSLETTER

The Signal Arts Society was created in 1999 to provide a source of contact between artists and the Signal Arts Centre. One of the main sources of information since then was the newsletter. In the beginning this was a single A4 sheet photocopied on both sides.

Since then it has gone through many formats until it reached the highly professional copy that you hold in your hands now. For the last year Joan Quinn has practically single handedly produced the newsletter. But there is just too much work for one person so a committee has been formed to bring the newsletter onward from here.

The committee consists of:

Colum O' Neill:	Editor
Joan Quinn:	Graphic design and layout
Erika Doyle:	Copy and material
Oonagh Donnelly:	Graphic design and layout
Claire Flood:	Content co-ordinator, editing and production management
Linda O' Neil:	Funding opportunities

If you have anything you would like to submit for inclusion in the newsletter please address them to Erika Doyle C/O Signal Arts Centre.

In the New Year we will be launching the [Signal Arts Centre](#) website - if you would like to include your web links or would like any information on the website please contact Oonagh Donnelly at the Signal Arts Centre.

As always I am available to all members to answer any queries.
Phone/text) 086-8319592.



THE MAD CLOWN DESIGN INDUSTRY
Airbrusher & The Real Kustom Painter

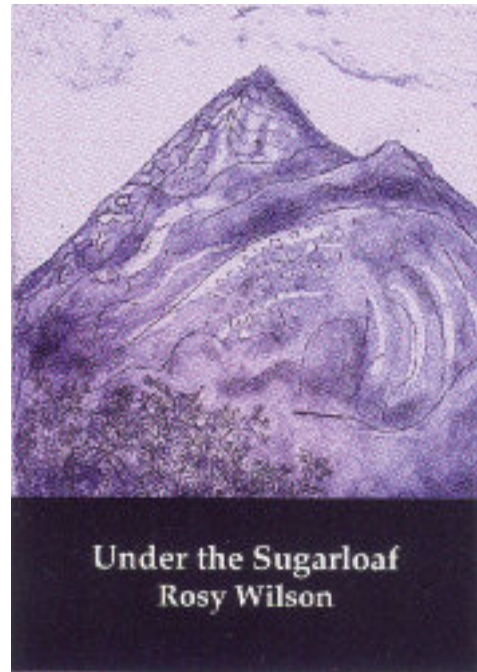
A leading Irish airbrusher. The Mad Clown Design Industry will always do the best to make you happy!

Whether it is "just" respray with some special sparkling paint, or full airbrush design. Airbrushing and "kustom" painting since 1990. The Mad Clown Industry is the perfect choice for everybody who wants to step out from the crowd!

Cars, Helmets, Bikes, Trucks. Also old style signs & sign writing.
Contact: 087 923 3035

CALLAN ART SUPPLY

Dun Laoghaire Enterprise Centre
George's Place,
Dun Laoghaire,
Co. Dublin.
Tel: 01 202 0056
Fax: 01 230 1044
Mobile: 087 939 1924
www.callanartsupplies.com
sylvia@callanartsupplies.com
info@callanartsupplies.com



ROSY WILSON

Rosy Wilson lives in Kilmacanogue, Co. Wicklow. Her book 'Under the Sugarloaf', is scattered with images of Wicklow as she explores friendship and family from birth to death.

An excellent book that is accessible and well honed. 'Under the Sugarloaf' will be launched at [Signal Arts Centre](#), Bray, on Thursday 7th December at 7 p.m.

Rosy invites all to join her in this celebration on the publication of her first collection.

HAVE YOU GOT NEWS FOR US?

We want to hear about exhibitions you are holding (we want to tell everyone about it and it's free advertising for you); exhibitions or performances you have seen (write us a review); awards you have won (boasting is definitely encouraged). We would also love images of your work for

the cover of the magazine. In fact send us anything you think might interest or amuse us!

Send us your stuff your magazine needs you!

BRAY ARTS CLUB

NIGHT OUT IN

The night session at the Bray Arts Club on November 6, 2006 was absolutely exhilarating. The line-up started off with visual artist Cólín Rush. Cólín was a little nervous starting out but soon got into stride as he enthusiastically described how his paintings evolved from his fascination with describing figure images from popular TV shows and transposing them from the tv screen to the canvas. Surveying his work from the early days to the present, the viewer could see how Cólín mastered a particular descriptive language for his painting and then once that was done how he had to take another path to describe his work in a different way. While Cólín's work is representative on the one hand, on the other it is not the image as he said but the shapes and forms that he is painting. I would not be surprised to see that Cólín will eventually move

more into the abstract in the future and it will be interesting to see how he will meet that challenge.

Next on the list was well-known and internationally published Bray based novelist, screenwriter, and literary critic O.R. Melling. Recently back from her tour of the U.S. where she was named as one of the top ten Young Adult writers, along with J.K. Rowling, Melling entertained us with a short introductory biography and mentioned her very artistically inclined family half of whom live in Bray, and then she read a short excerpt from one of her books *The Hunter's Moon*. After that Melling gave an interesting outline of her thoughts on artists and the making of art dotted with a number of pithy quotations. The artists in the crowd nodded their heads in agreement with her descriptions of the 'agony and ecstasy' of making art. Ask for O.R. Melling's latest books from her *Faerie Chronicles*, *The Hunter's Moon*, *The Summer King* and *The*

Lightbearer's Daughter.

Usually the drama segment of the night is held after a short break (time to get a pint) but this night the drama was cancelled due to illness. However on came the music and what a finish to the night: hand clapping, footstomping, head-shaking music thanks to the enervating efforts of Ger Doyle and his nephew Joe. They were begged mightily from the standing ovations for an encore and were happy to oblige. Ger said it was amazing to have such a boisterous crowd on a Monday night.

The Bray Arts Club is not to be missed. A €5 entry fee (€4 for concession) is a small price for some really great arts entertainment and generally most of the artists are Bray based. So keep your social calendars open for the first Monday night of every month. I look forward to the next one in December.

Pat Burnes

ABOUT BRAY ARTS CLUB

Bray Arts was founded ten years ago. It was set up to provide a forum for artists and people who were committed to promoting the arts in all its forms. Initially it had a very strong lobbying element to it and, although it is sometimes forgotten now, Bray Arts played a major role in developing the concept and subsequent building of the Mermaid Arts Centre in 2002.

The words community, art and networking come to the fore when one attempts to describe what Bray Arts is. Perhaps the best way to describe it is to simply state what it does. On the first Monday of every month, from September to

the following June, Bray Arts Evenings happen in the Heather House Hotel function room. A typical Arts Evening would have a presentation or talk from a visual artist describing his/her work, followed by perhaps a Novelist, Poet, Actor, Dancer or Puppeteer and then typically the evening would be rounded off by music ranging from opera, jazz, classical, folk, rock and Irish. As well as its Arts Evenings, Bray Arts publishes and distributes a free Journal every month (see www.brayarts.net).

The idea of community is very important to Bray Arts and it attempts to form links with as many individual artists and arts organisations as possible. For example, in recent years the majority of the visual artists who speak and present their work at the Arts Evenings and who

supply the images for the Journal covers are introduced to Bray Arts by Signal Arts. This has been mutually beneficial for both organisations and for the wider arts community in Bray, South County Dublin and Wicklow.

Bray Arts is a totally voluntary organisation that receives about 25% of its funding from Bray Council and Wicklow County Council. The rest is 'scraped together' from admission fees to its arts evenings and the odd fund raiser. There is no formal membership for Bray Arts. Everyone is welcome to the arts evenings which, if the feedback is accurate, is one of the best and most enjoyable evenings out in Bray and it only costs €5.

Dermot McCabe

TOYS 4 BIG BOYS



FILIP SERVIT AT WORK WITH CURIOUS ON LOOKERS.

Toys 4 Big Boys traditionally held in the RDS in Dublin during the first few days in November is one of the biggest shows of the whole year. Every young boy's dreams and fantasy are catered for whether they are small or big, young or old. Some of the stands were selling expensive cars, helicopters, speedboats, computers, motorbikes and other such stuff.

And even Signal Arts Centre had a representative at this event. Although working under Bray's Old Skool Motorcycles banner, wearing embroidered ace of spades logo of this company on his hoody and T-shirt, hidden behind choppers worth tens of thousands Euro, stuck between leather jackets and other biker's paraphernalia, our man was there and that is the fact. And who was this mysterious agent? You have, probably, heard of him before, staff artist, plastic modeller and aircraft profiles creator, one of our Children's Art Class teachers and airbrusher - Filip Servit.

Let's see what he himself says about this show and about the part he played in it:



FROM LEFT: FILIP SERVIT AND JOHN MURPHY

"I have been co-operating with John in Old Skool for a while, so I was not surprised, when I was asked if I would be interested to make some special paint job for this show. I agreed and I begun with my spraying. But after a few days I was surprised, when he asked me if I was ready to go there and do some live airbrushing. I said something like oh yea no worries, but to be honest, I wasn't quite sure what to expect and I was very nervous indeed. But as soon as I pressed the trigger on my airbrush for the first time on Thursday night, everything was perfect. I even forgot the crowd, which got bigger and bigger every time I started to work, people were literally hypnotized by this technique. It was a great success..."

Filip finished one picture and half finished another during these four days of his airbrush demonstrations, so there is still some work to do before they can be displayed on this year's Meitheal exhibition at Signal Arts Centre which will be installed on 18th December.

Filip Servit

THE ELAINE REIDY EXHIBITION



Elaine Reidy a UCD graduate with Fine Art background, held the opening of her first solo exhibition on Friday the 10th of November. Ms Pat Burns a fellow artist and Signal board member made the opening address in which she congratulated Elaine on her work and her first solo exhibition. Guest musicians and friends of the artist, Miriam Ingram and Colin Morris performed some songs from Miriam's début CD 'Trampoline'. In this exhibition, Elaine's medium is chiefly oils, her new work includes still life pieces and landscapes depicting scenes of Bray and the surrounding area. The artist's chosen subjects are presented with depth covered with a haze of sparkling nostalgia. Using principally blues, yellows and greens she creates aesthetically pleasing images with a mystical dimension.

In 'Yellow House Killiney' Elaine's favourite painting from the collection, the artist depicts the front of a large Georgian house which spans the work, brilliantly lit it dominates the image. She uses blues to define the building's architectural features like windows, doors and roof tips that melt chimney pot into chimney pot of the surrounding buildings, trailing off into the distance. Behind a feathered blue foreground the house is illuminated with yellows that glow in golden remembrance. This painting exudes warmth that carries the viewer to the sentimental plane that first inspired the artist.

In a pair of predominately blue paintings 'Cliff Walk' and 'Bray Head Lights', inspired by Bray's Head, Elaine creates a depth cloaked in an intangible mystic. In 'Cliff Walk' the artist using a pallet of blues, imprints the ghostly outlines of an ascending rope fence which disappears into an upward slope. The paintwork has a high gloss quality which textures the surface of the painting. This finish is reminiscent of the old masters paintings and the scene is reminiscent of a shipwreck viewed from the murky depths. In 'Bray Head Lights' the viewer follows a string of fuzzy lights up an ascending hill. There is a sense of darkness and heavy rain that obscures the landscape. In this work the depth of the painting is veiled with mystic that welcomes the viewer's imagination.

In 'Little angels' a still life piece, Elaine depicts a vase, a small horse and two miniature angels surrounded by a textured soft yellow lit background. The vase texturing resembles fragmented glass and is filled dry earthy reeds. One angel appears to be moving further into the painting while the other faces outwards bowing her head as if in contemplation or pray. The small horse enters the painting casting a shadow over the foreground, it seems to be approaching the two angels. The variety of subjects in this work call to the viewer to examine the painting further and leaves them with quietly charmed experience.

Elaine Reidy's exhibition showed the artist's technique and talent expressed through landscapes and still life works by creating depth and an intangible mystical quality in her work. In her veiled landscapes she invites the viewer's imagination and in her still life work she ensites their interest with a variety of subjects sprinkled with Elaine' unique magic.

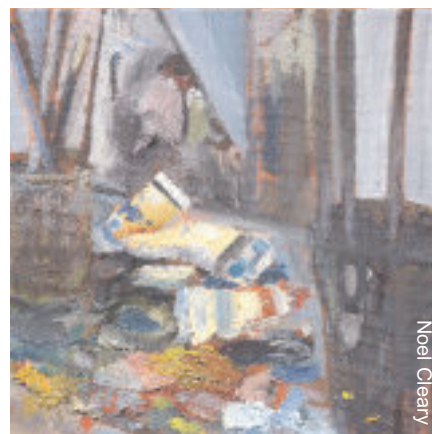
Christine Mannion

'THE INTERNAL JOURNEYING LANDSCAPE' Artist Noel Cleary.



Noel Cleary a Fine Art graduate of Sligo RTC exhibition at the Signal Art Centre was dominated by Irish landscapes, this is a theme which Noel describes as "constantly striving". Noel explores this subject through a number of mediums and creates visual spaces for the viewer, scenes with an emotional charged pallet, and a technique that appeals to our curiosity and imagination.

In 'Into Town' a large work, Noel depicts a journey to a distance cityscape by two roads disappearing into a far smoky horizon. The two roadways are directed angularly towards the skyline, and each road is imprinted with the memory of past movement and activity. The foreground invites the viewer to take this journey and the lazy river and the grassy bank direct us towards the city with a roofed building pinpointing our journey's beginnings. The artist's pallet reaches from lush moss greens and earthy tones, to contrasting darken roadways with rivers of droplets chasing from a tossed evening sky. It is a combination of these elements that draws the viewer inwards with the untold understanding of the harsh journey ahead.



In a series of small landscapes on canvas, Noel shows through his skilful use of colour the passion represented in his landscapes which is "immediate and emotive". In 'Red Sky' an oil on canvas work, your eye is lead inwards along a blue road surrounded by lazy green trees under a street lamplight to the explosion of a red horizon. The image grasps the wonderment and optical delight of the night sky. The brush strokes are heavy and immediate creating an mpressionistic

viewpoint which captures the awe of the scene and its' transitory essence.

In a selection of primarily black and white works the artist examines the ambiguous nature of shadow, which incites the viewers' imagination. In the largest of these 'Oldcourt 1' Noel presents a Cul De Sac surrounded on all sides by large white washed houses, shaded by a nighttime sky. The proportions are almost lifelike with the car park area inviting the viewer to enter. A large white van is parked there overlooked by the orange flow of a streetlight. There is a familiar tone to the work with the artist's viewpoint from a facing top floor window. The absence of figures fuels our curiosity and imagination, this image perhaps reflects the street at rest with its' memories of the day's activities.

The exhibition of 'The Internal Journeying Landscape' by Noel Cleary was a show, which demonstrated the artist's skilful use of a number of mediums to examine the versatility of landscapes and their ability to stir our emotions and capture our imagination.

Christine Mannion

JAN-MAR 2007 GALLERY PROGRAMME

Gallery Open: Tue to Fri 10-5pm Sat to Sun 12-5pm Closed for lunch 1-2pm



MEETING EUROPE

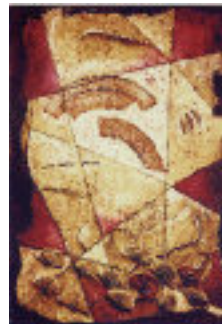
An Exhibition of mixed media by Anno Henke, Patrizio Donati, Roberto Lacentra, Stefano Tamburrini.



Patrizio Donati



Stefano Tamburrini



Anno Henke



Roberto Lacentra

From Tuesday 2nd - Sunday 14th January. Opening Reception: Thursday 4th January.

ARTIST IN THE COMMUNITY

An exhibition of mixed media by Emer O' Boyle



From Tuesday 16th January - Sunday 28th January. Opening Reception: To be confirmed

HORIZON

An exhibition of paintings and photographs Barry Foley & Emma Sweeney



Barry Foley



Barry Foley



Emma Sweeney

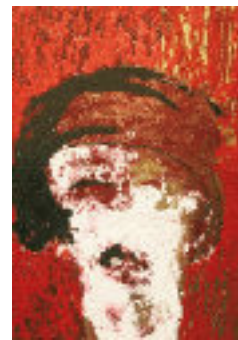


Emma Sweeney

Tuesday 30th January - Sunday 11th February. Opening Reception: Friday 2nd February.

FIRST HAND EMOTION

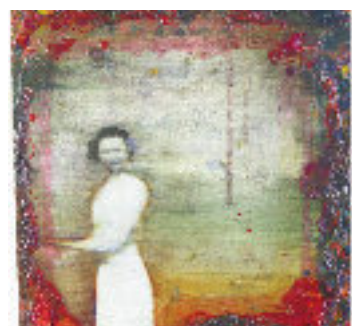
Paintings by Katarzyna Gajewska



Tuesday 13th February - Sunday 25th February. Opening Reception: Friday 16th February.

AN EXHIBITION OF NEW WORK

Brian Hannigan



Tuesday 27th February - Sunday 11th March. Opening Reception: Thursday 1st March.

MELTING POT

Mixed media from The New Dawn Group & Festina Lente



Tuesday 13th March to Sunday 25th March. Opening Reception: Thursday 15th March.

NEW BEGINNINGS

Ceramics by Alan Boyle



Tuesday 27th March - Sunday 8th April. Opening Reception: Thursday 29th March.

 Please retain this listings information and opening dates as your attendance would be welcomed.

INTERVIEW WITH FRANKIE GALLAGHER & CABRINI LYNCH by Claire Flood



Cabrini Lynch

By the time the Newsletter goes to print Frankie and Cabrini will have had their exhibition in Signal, I'm sure it will be a very successful show. I took the time to have a chat with them before the show to gain an insight into the planning and rationale of showing together.

Frankie and Cabrini met about twelve years ago when they were both working as art teachers in Cabinteely Community College and they hit it off straight away. While they were working together they discovered a common bond in their love of art that was both textured and tactile. This is not surprising as they both have a background in sculpture and clay work. They decided to exhibit together seven years ago and the exhibition in Signal will be the third time to show together.

I asked them the question, why would you choose to show together as opposed to individual solo shows?: Although they both have shown in numerous solo and group shows they enjoy the process of a shared show and working through together on a theme and feel they can advise each other on techniques and of course showing together halves the financial burden. They think that working together has allowed them the freedom to develop and grow confidence in their individual styles. They feel strongly that women artists need the support of other women artists.

Both artists have reared their families whilst keeping their art work on the back burner, Frankie says she changed from clay work and sculpture to painting because she felt that the clay work was

almost impossible to pursue when the children were small. She has never regretted the move from sculpture to painting and the influence of her background in clay is very evident in her work. Frankie graduated in the 1970's and has worked as an art teacher ever since, she finds teaching art very satisfying and rewarding. She believes that teaching can contribute to her own creativity and also that the pleasure from seeing her students progress, to college etc., is very gratifying.

Frankie took a break from teaching when she moved with her family to Saudi Arabia. She found she had lots of time to paint in earnest. Frankie considers this time in her painting career as a very important one as she developed a new colour spectrum and discovered on her return to Ireland that her colours were very vivid. She has continued developing her art by exploring nature, which is her passion, in all its forms and attending various courses and workshops.

Cabrini, on the other hand, started her degree in 1970's but did not finish until she was a mature student. She has worked in most mediums since then and has a passion for body works and in particular in installations which she says she will return to soon. Although Cabrini enjoys teaching she prefers to work on her own pieces. Cabrini is particularly interested in the theme of "constructed beauty" and women's extreme pursuit of beauty which has been perpetuated by the media and commercialism that have seduced us into believing in "magic cosmetics". She has done some work around this theme but it is not in the current show. She says that she started painting again, as opposed to installations, due to personal circumstances. Much like Frankie she feels that now her children are grown up that that allows her the time to develop her work. Cabrini's degree was in Fine Art, sculpture which is another commonality between the two artists and can be seen in the work. Since Cabrini returned to education she has obtained, along with a first class honours degree in Fine Art-Sculpture, a certificate in each of the following Community Arts, Teaching Adults and Women's Studies. She also obtained a diploma in Fine Art-Painting and a diploma in History of European Painting.

Much the same as Frankie, Cabrini has an



Frankie Gallagher

interest in nature and in particular the sea. She is fascinated by the energy and force of the sea and tries to capture the rhythm and movement and the play of light on the water.

I asked both women about influences and inspiration - Frankie says that she looks on Van Gogh as a significant influence on her work and she loves the texture and motion in his work. She also has been inspired by the Group of Seven, which was a group of Canadian impressionist artists in the late 19th and early 20th Century. She went to see the works on show in Canada a couple of years ago and was hugely impressed and says that the work has had a significant influence on her use of colour.

Cabrini waxed lyrically about an Emile Nolde piece that is in the National Gallery, "a delicious, delightful watercolour" which is her favourite piece. Helen Chadwick's powerful piece of woman and new born child has also inspired Cabrini. The Celtic influence, i.e. Sile Na Gig, have a lot of bearing on her work because of the connectedness to the land and the sea.

Both artists see themselves as feminist artists and consider the Celtic influence has an effect and allows them to have respect for the male and the female.

SIGNAL ARTS CENTRE ASSOCIATE - KATE MINNOCK

Kate Minnock is a Wicklow based artist who is currently occupying one of Signal's studio spaces. Kate had a very successful solo show in Signal in November 2005. Kate is one of the newest members to Signal Arts Society.

Kate graduated from NCAD with a BA in Fine Art - Painting in 2003. Kate's work is concerned with the fragility of the natural environment. Kate's practice encompasses painting, printmaking and installations. She has exhibited nationally and internationally having had three previous solo



Kate Minnock

shows and numerous group exhibitions including shows in New Zealand, Canada, 2006 Kilkenny Arts Festival and the Claremorris Open Exhibition.

'Minutiae', an exhibition of mono-prints, recently opened as part of the 2006 Tulca Visual Arts Festival in Galway. This installation of approximately 80 unframed prints aims to draw attention to various subtle and delicate minutiae that surround us. Through a combination of ambiguous compositions and figurative marks Kate's work fuses together to animate fragments of nature. Abstracted branches connect to resemble reindeer antlers, green spots become cells which breed like bacteria, waves transmute into mountain ranges; opening up a relationship and a sense of movement between each piece.

Kate will have a two-person exhibition at the Tinahely Courthouse Arts Centre, Co. Wicklow from January 14th to February 10th, 2007.

Claire Flood

RAY CORCORAN INTERVIEW

Frustration at a lack of selling opportunities led to local artist Ray Corcoran opening his own gallery in Bray. Passers by may have noticed a hub of artistic activity on the Vevay Road since the Vevay Art Gallery opened its doors in early August. "I just couldn't get the work to the people who wanted to buy it says Ray, Signal Arts Centre are great, and the Signal Arts Society have an exhibition there

every year but I wanted to have a steady stream of work constantly available."

Self taught Ray is aware of the elitism that can sometimes pervade the art world. A number of artists work is available for sale in the gallery in a huge array of styles. Prices start at €50 and go up to approximately €1500 so there really is something for everyone. All are welcome to browse and if anyone is interested in submitting work Ray would be only too happy to deal with enquiries. Commission is a reasonable 30%,

which compares favourably with many other galleries who can charge up to 50%.

Ray is a firm believer in art being for everyone and so has worked on cultivating a space accessible to all. An easel stands in the gallery space and Ray can regularly be seen painting away or offering advice and tips to budding artists who call in for a chat. The Vevay Art Gallery is surely a welcome addition to the artistic community in Bray.

Erika Doyle

YOU MAY HAVE INFORMATION ON YOURSELF AS AN ARTIST IN THE COMING SIGNAL WEBSITE.



We are hoping to launch a Signal Arts Centre Website early 2007. Oonagh Donnelly, a staff member, has been working tirelessly on this project for some time now.

There is a section in the website entitled SIGNAL PEOPLE. So people involved with Signal, either Signal Society, Signal board members, Signal staff artists, Signal Administration and artists exhibiting may avail of an opportunity to have information on themselves on our website as an artist or their involvement with Signal. Your name can link to more information about you including text and images.

Life Drawing Sessions



My fallen Angel By Kory Mullally.

Every Tuesday and Wednesday evenings from 7.30 - 10.00 at the Signal Art Centre.

Block of 8 weeks €65.00
S.A.S members €57.00
Please Ring Signal to book.
Ph: 01 276 2039

CLASSES IN MOSAIC
COMING SOON AT
SIGNAL ART CENTRE
IF INTERESTED RING
US ON 01 276 2039

ARTIST IN THE COMMUNITY



Signal Arts Centre is delighted to present Artist in Community 2006, grant aided by Wicklow County Council. Signal commissioned artist Emer O Boyle to develop a collaborative arts project with women from St. Fergal's Resource Centre and Little Bray Family Resource Centre in Bray.

Emer O Boyle has been involved in a number of collaborative arts practices in Dublin over the last five years. Her M.F.A. research in N.C.A.D. focused primarily on the contemporary understanding of socially engaged arts practice. This understanding suggests an art practice rooted in the process of dialogue and a mutual exchange of ideas.

This project began with conversations about photographs from the lives of each of the women, which they selected in an intuitive manner. Through these conversations, personal and political issues were identified and discussed and a series of works began to evolve. The outcomes, materials and content were not pre-determined and what resulted was a dynamic exploration of media including sound, projections, video, drawing, mono printing, casting and painting. The process included both individual and collaborative research based on everyday life experiences. The culminating exhibition provides a thought provoking portrayal of personal truths characterised by both humour and sensitivity..

THE CERAMICS CLASS

Eight of us excitedly assembled in the back room of Signal Art Gallery on Monday, March 6th 2006 for our first ceramics class. Our teacher, Maura Ryan explained about different types of clay we would be using - different glazes and the kiln used for "cokking" or firing the clays. We learned how to prepare the clay by kneading it similar to making bread. This "hands on" treatment was called "wedging" and was necessary to remove air bubbles which might spoil the clay.

Our first lesson handling the heavy damp clay was to make a "pinch pot" this required making a dent in a ball of clay and pushing the clay out with our fingers from the inside making a simple pot shape. We all did pretty well with much encouragement from Maura.

From pinch pots progressed to 'coil pots' made from a long slim sausage of clay. The trick was to roll the coils even keeping the layers level as we coiled the lengths into a bowl shape. Afterwards the coils had to be smoothed over after every 3rd coil to prevent them separating.

We learned that even pieces of seaweed, twigs and leaves could be used to decorate a pot creating an imprint in the damp clay.

Plates were also made and decorated with pieces of coloured glass which melts once fired in the kiln.

Glazing our pottery after the first firing was often messy but exciting, as results of colour and finish after a second firing were unpredictable. Our most ambitious project was making a clay box and each slab of clay had to be evenly flattened and carefully measured before positioning into place.



FROM LEFT TO RIGHT: CATHERINE, DEIRDRE, JEAN, MAURA (FACILITATOR), ANN, ROSEMARY, PATRICIA AND JENI.

we were relieved and delighted that our boxes dried without cracking and successfully fired without collapsing.

The class all blossomed under Maura's care and patience as did our wares over the ten week course.

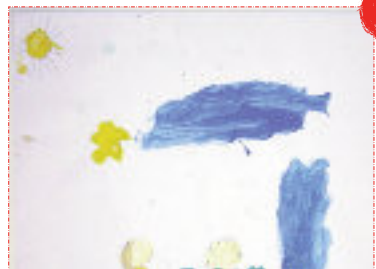
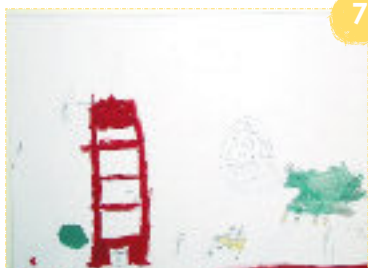
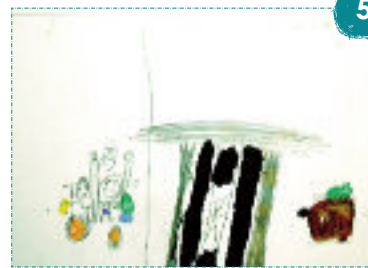
by Jeni Taylor

Childrens classes



This is a story made up by Greg and Filip's Art Class. It does not leave a lot to the imagination! The children decided on the story line and then they each painted a picture to correspond.

Filip and Greg are on their way to New York. Greg is crying for his Mama. They get to the main street they look around and see the statue of the horse of trough. Greg Filip was speeding again Greg gets a pot of paint in the face. Gregs girlfriend gets shot. They kept going along New York and a horse began to follow them. Greg was arrested and sent to jail. Filip payed ten dollars and two cents to get Greg out of jail. They got stolen Filip gets drunk and Greg gets rocked out by New York they ask Tina the compact seal for directions. Greg drives to a bar and gets drunk. Greg thinks back to when they were children and goes to a store. Next morning they wake up sober and they get on their horse and they go to Kent in swan they meet a very very pretty girl and distracted by her beauty they get crushed by ten ton weights!



SIGNAL STAFF



Johannes DeGroot: Jan studied print in NCAD and was a reggae DJ in many of Dublin's nightclubs. He joined Signal in May of this year and is currently working on a large mural project with the Bray Addiction team. He is also helping to run Life Drawing and Children's Art Classes in Signal.



Oonagh Donnelly: Oonagh qualified in Design Visual Communications at D.I.T Her occupation as a senior graphic/web designer has put her working successfully in various sectors such as Environmental, Financial, Community Development, Health, Fashion, Computer Games and more. She joined Signal in May 05 and hugely enjoys Working with people on community projects and helping out at Signal.



Erika Doyle: Erika studied acting and drama for many years, both as an actor and working with children's theatre groups. Erika studied TV. Video and film production and has appeared in and worked on numerous short films, many of which has traveled to international film festivals. Today Erika is writing, acting and works as a staff artist here in signal.



Claire Flood: Claire is Signal's epicentre. She is the supervisor of the CE (community employment) project, administrator of everything else and knowledge base of all that happens. If there is anything you need to know she's the person to ask. She has been with Signal since 2002 and as well as working full time in Signal is also studying for a Degree in Community Development in Maynooth.



Monica Grossman: Monica studied Furniture Design in St. Thomas's College, Bray, and Since then specialising in stained glass., specialising in stained glass. Monica joined Signal in 2005 and has been involved in many community projects, mainly schools in Bray. Currently she is facilitating classes for adults with special needs.



Sonia Haccius: Sonia studied in Middlesex University London and went on to get an MA in Theatre Design from the Slade School of Art in London. She is an accomplished set designer and has worked on a number of sets for theatre and for RTE. While in Signal she has worked on a number of projects including our community summer school outreach programs.



Sarah Morshead: Sarah received a BA Fine Art (painting) from University of Northumbria and a teaching certificate from the University of Greenwich. She has worked as an artist in residency in Kerry and has a wide experience in othr art related activites. She is looking forward to working with different community groups.



Greg Murray: Greg worked for many years in the highly competitive world of advertising. He is an accomplished graphic designer and portraitist. He joined Signal in 2005 and has worked on a number of Signal's community summer school projects. Currently he is working on the Children's Art Classes and has worked on the Ravenswell Summer School and Bray School Project.



Joan Quinn: Joan studied graphic design in St. Thomas's college in Bray and joined Signal in September 2005. Since joining Signal she has developed the new Signal Arts Society Newsletter and is also currently working on designing the new Signal prospectus.



Maura Ryan: Maura has studied a FETAC Award in art, ceramics, craft and design from St. Thomas's college in Bray. She also completed a course in person centered art therapy in Crawley College and also Speech and Drama in Emerson College, Sussex. She has taught arts and crafts to young children during her time as a kinder garden teacher. Maura is currently teaching ceramics to adults in Signal, she has also done Batik.



Filip Servit: Filip is an arts and crafts graduate. He joined signal in October of 2006. He is currently teaching the children's art classes in signal and also works on projects for the Marino school in Bray.



William Slattery: William has been a staff member since 2004. William has worked on a number of projects in Signal including a mosaic project with children in The Ark in Temple Bar. He has done extensive work with Marino School and they are so delighted with the work he has done there that they have requested him to work again with them throughout this term year.



Aisling Leonard: Aisling joined Signal in August 2006 and has one of the most important jobs in the centre. She looks after the accounts!



Davnat O' Reilly: Davnat is responsible for Exhibitions, current and future. All queries from artists and public regarding exhibitions are dealt with by Davnat. Davnat was one of the founding members of Signal.



Karen Luby: Karen joined Signal in December 2005, she looks after sales and administration.

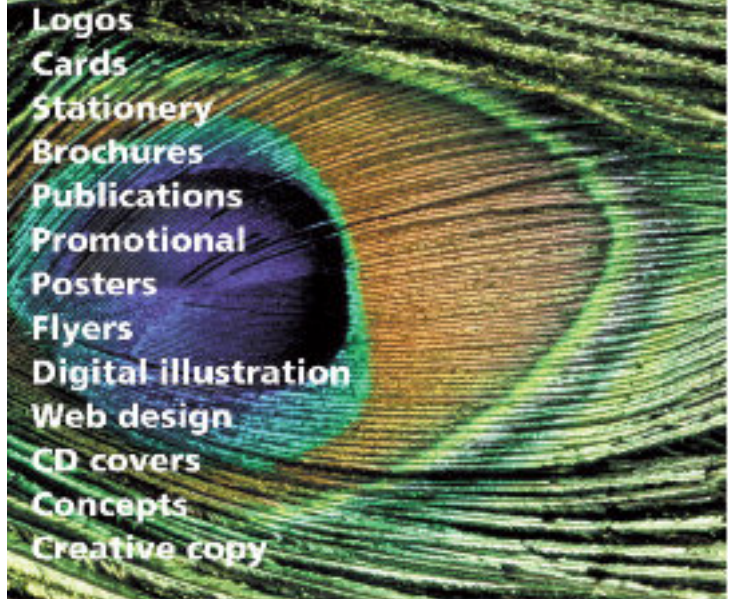


Anne Power: Anne has a certificate in Art & Design. Anne is hoping to pursue her art work and gain experience in facilitating different classes.

Monica Grossman Stained Glass



Ornamental pieces
and window panels
Available for commission
Contact Monica on: 085-148 1649



- Logos
- Cards
- Stationery
- Brochures
- Publications
- Promotional
- Posters
- Flyers
- Digital illustration
- Web design
- CD covers
- Concepts
- Creative copy

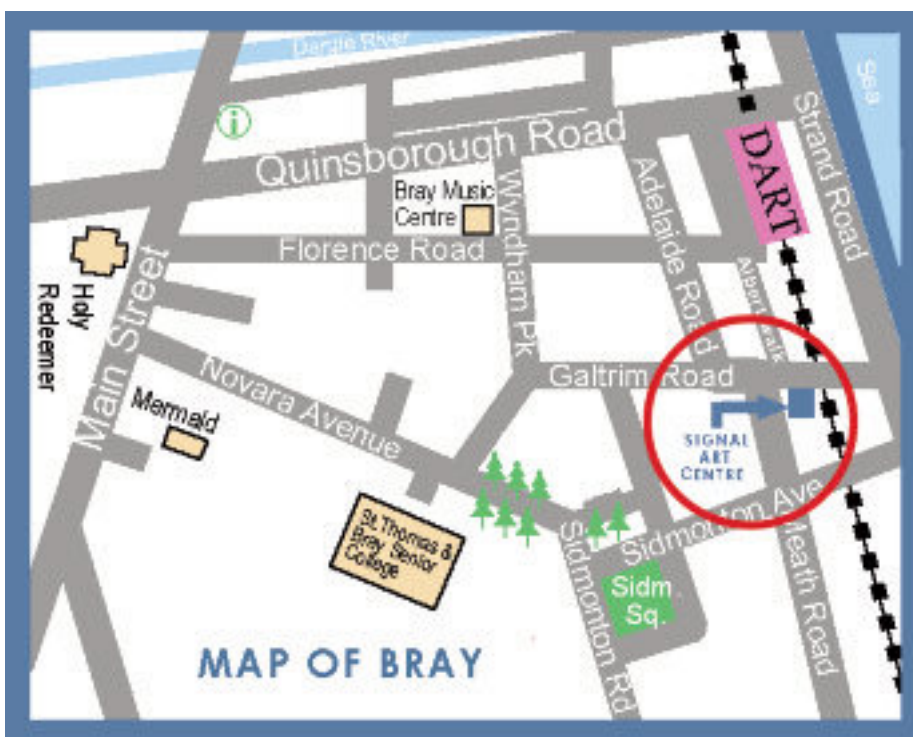
Provides graphic design with distinction, innovation, identity, function, aesthetics and precision. Any query is welcome.

oonagh2000@yahoo.co.uk
+353 (0) 86 875 1682

Graphic
communication
services



SIGNALS LOCATION



Gallery Open

Tuesday to Friday
10.00 - 1.00pm and 2.00 - 5.00pm
Saturday - Sunday
12.00 - 5.00
Closed Monday

Signal Arts Centre.
1 Albert avenue,
Bray, Co. Wicklow.

Tel: 01 2762039
Fax: 01 2869982
Email: signalartscentre@eircom.net