



SIGNAL ARTS NEWSLETTER

Volume 15

April - June 2018

Issue 2





SIGNAL ARTS SOCIETY

MEMBERSHIP OFFERS YOU:

A 10% discount

- On any purchase of artwork on sale in Signal Arts Centre
- On life drawing and other art courses
- On the hire of darkroom and ceramics facilities

Participation in the

Annual Signal Arts Society Exhibition

(subject to selection)

Reduced commission on sales of your work from 25% to 15%

Our **quarterly newsletter** will keep you in touch with what is happening in the arts community. You have the opportunity to publish a profile of your work, advertise your upcoming shows or projects, write about your favourite artist or review an exhibition that impressed you.

The opportunity to display images of your work and an artist's statement on **a page of the Signal website**. See links on the SAS page on the Signal website for examples

Invitations to exhibition openings and other cultural events organised by the Centre.

Content

3

News from Claire
New Staff
2018 Submission calls

4/5

St. Patricks Day at Signal Arts

6/7

Exhibition Programme April - June 2018

8/9

News & Reviews

Dementia Group Workshops
Signal Arts Fundraiser Retrospective
Darkroom Restoration Project
Grayson Perry Exhibiton / Ceramics Class

10

Exhibiting Artist Profiles

Graham Shepherd - *Brief Encounters*
Kinvara Nursing House - *A Day in the Life*
Karen Hickey - *Clothed*

11

Exhibiting Artist Profiles

BAEC Students - *An Expressive Journey*
Clíodhna & Grainne Quinlan -
The House on Chicken's Legs
Signal Arts Society - *S.A.S 2018*

12

Noticeboard

BOARD OF DIRECTORS
Michelle Fullam (Chairperson)
Linda O'Neill (Secretary)
Eleanor Phillips
Blaithín O'Brien
Colum O'Neill
Yanny Petters
Doug Ross

CEP MANAGEMENT COMMITTEE

Michelle Fullam (Chair)
Eleanor Phillips (Treasurer)
Colum O'Neill
Linda O'Neill (PDO)
Greg Murray (PDO)

NEWSLETTER TEAM
Claire Flood:
Co-ordinator, editing
production management
Aidan Lombard:
Layouts, editing, text setting
James Nolan:
Photography
Kaisa Ypya & Jade Butler:
Newsletter Committee

**SIGNAL ARTS SOCIETY
COMMITTEE**
Colum O'Neill (Secretary)
Greg Murray

CE SUPERVISOR
Claire Flood

ADMIN STAFF
Geraldine Smith
Ger Keenan
Becky Dunford

STAFF ARTISTS
Jade Butler
Conor Rafferty
James Nolan
Sean Nolan
Stephanie Burke
James Hayes
Aidan Lombard
Margaret Walsh
Ciaran Coogan
Donal Smyth
Audrey Kane
Sean Murray
Drew Freeland

OFFICE HOURS
Mon to Fri 9.00 - 1.00 and 2.00 - 5.00

GALLERY HOURS
Monday to Friday 10 - 1 and 2 - 5
Sat and Sun 10 - 5
Signal Arts Centre, 1 Albert Avenue,
Bray, Co. Wicklow

Tel: 01 2762039 - Fax: 01 2869982
Email: info@signalartscentre.ie
Web: www.signalartscentre.ie

Signal Arts Centre is represented on the following: Bray Partnership,
Wicklow Arts Network, Bray Chamber of Commerce.
Contact Signal Arts Society: signalsociety@gmail.com

Opinions expressed in this magazine will not always be those of
Signal Arts Centre and of course we reserve the right to edit all
submissions where necessary.

Please address all
Newsletter correspondence
to Claire Flood
at Signal Arts Centre

Printed by Central Press, Bray

New Staff

Drew Freeland is an Irish artist based in Dublin and Wicklow and works with the visual image.

He has recently graduated from Dun Laoghaire IADT with a bachelor honours in Photography.

His work involves portraits and landscapes and street photography exploring the urban space.

While working mainly with the still image, he creates books and works with the moving image. He has exhibited his work at group shows around Dublin and looks forward to being a part of the Signal Arts team.



News from Claire

Hi All,
It is that time of the year again where we have amazing photos of the St Patricks Day Parade and I would just like to take this opportunity to thank all the staff in Signal who embraced the challenge.



The parade would be nothing without the costumes designed and worn by staff and some of the children from the classes run in Signal so thank you so much for your input.

Please check out our blog for some amazing images of the great Ceramic classes taking place in the Centre thanks to James Hayes.

I would also like to appraise you of the fact that the Darkroom is now back up and running – if you are interested in using it please get in touch.

That's all from me folks!

*A HUGE THANK YOU TO ALL
WHO MADE ST PATRICKS DAY
SUCH A MEMORABLE EVENT!*

Claire Flood

Signal Open Exhibition Submissions

Signal Arts Centre is delighted to invite submissions from Artists for the 6th Annual "Signal Open" exhibition, to be held in the Signal gallery from the 7th - 19th of August 2018.

Submission guidelines:

€9 per work entered

2-D work only (photography/paintings etc)

Maximum size 92 x 92 cm

Application forms available on
www.signalartscentre.ie

The show will have a formal opening on
Friday 10th August 7-9 pm

Closing date for submissions:
Friday 27th April

€1000 PRIZE to the Artist whose piece is selected as 'Best in Show'

**** 2017 Exhibition Winner ****



Dianne Whyte - The Traprooms

S.A.S Exhibition Submissions

*To all our friends in the Signal Arts Society:
With this edition of the newsletter you will find an application form for this year's Signal Arts Society's Annual Exhibition. Please note the closing date for submissions is Friday 27th April 2018*

I would like to take the opportunity to thank you all for your continued support and I look forward to seeing you all in June at the exhibition opening.

Yours sincerely

*Colum O' Neill
(Secretary)*



St. Patricks Day at Signal







SIGNAL ARTS CENTRE

1 Albert Avenue, Bray, Co. Wicklow.

Gallery Opening Hours: Monday to Friday 10 - 1 and 2 - 5 | Saturday and Sunday 10 - 5 | For more information please check: www.signalartscentre.ie



EXHIBITIONS PROGRAMME APRIL - JUNE 2018

GRAHAM SHEPHERD

'Brief Encounters'

Tuesday 3rd - Sunday 15th April

Opening Reception:

Friday 6th April (7 - 9 pm)



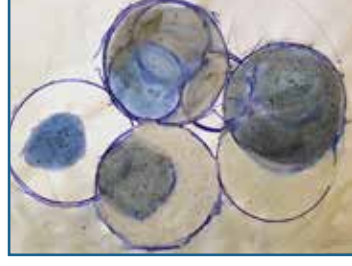
KINVARA NURSING HOME

'A Day in The Life'

Monday 16th - Sunday 29th April

Opening Reception:

Sunday 22nd April (3 - 5 pm)



KAREN HICKEY

'Clothed'

Monday 30th April - Sunday 13th May

Opening Reception:

Friday 4th May (7 - 9 pm)



BAEC STUDENTS

'An Expressive Journey'

Monday 14th - Sunday 27th May

Opening Reception:

Thursday 17th May (7 - 9 pm)



CLIONDHNA & GRAINNE QUINLAN

'The House on Chicken Legs'

Monday 28th May – Sunday 10th June

Opening Reception:

Friday 1st June (7 - 9 pm)



SIGNAL ARTS SOCIETY

'SAS 2018'

Monday 11th – Sunday 24th June

Opening Reception:

Sunday 17th June (3 - 5 pm)



Views and Reviews

Wicklow Dementia Support Workshop - Jade Butler

Wicklow Dementia Support is a voluntary organisation run locally by a group of committed activists. Their organisation supports people with dementia and their family carers, helping them to maintain a quality of life and enabling them to remain at home as long as possible.

Signal Arts has been working with Wicklow Dementia Support to facilitate workshops with a group of clients suffering from Dementia and Alzheimer's. The main objective of these workshops has been to use arts and crafts activities to express a sense of identity and to communicate their specific needs and services that they would like to see provided.

In one of our workshops we used collage and descriptive words around a central figure of a person to visually and verbally represent how we see ourselves. The focus in this exercise was on individuality and defining personality traits. In another activity we created banners for a faux-protest, posing the question "What can the government do to help people with memory problems?" This project was particularly useful as a platform for discussion on some difficult issues.

The participants enjoyed the activities and their feedback indicated that they enjoyed doing something new in the painting and craft and that it was a positive experience to express their thoughts and concerns relating to their illness. Wicklow Dementia Support are planning to hold a fundraising exhibition of the artwork created in the workshops, to take place in early May. This project was made possible by Community Foundation Ireland funding.



Signal Arts Fundraiser Retrospective - Audrey Kane

As the close of 2017 approached the staff, supporters and friends of the gallery met at the Harbour Bar for our fundraising event and a fabulous and fun night was had by all. The hostess for the night were Sister Agnes and her comedy School Night Quiz. She was assisted by the head mistress of the school 'that went in the wrong direction'. The night had many highlights, disaster was averted when there was a dispute over the birth place of Elvis, there was also some inappropriate laughter and sniggering from the quiz mistress relating to a sports question. Despite this, thanks to the team the night went off without incident. Congratulations goes to the winning team led by Theresa Mulvaney.



There were also special awards made by Sr. Agnes. The best team name award went to the VevaySectionists, She gave an award for the tidiest table, and finally there was an award for the table most likely to not succeed in the future (names withheld to protect the innocent). Sister Agnes was assisted by her A-Team. In no particular order Margaret (our head gir), Kasia (the senior prefect), Donal (the Mr Fix-it) and Michelle and Geoffrey our Markers/Adjudicators.

The management of Signal Art Gallery would like to thank all who contributed to the success of the evening. Over €700.00 was raised. Thanks to the Harbour Bar, the many local business that supported and donated prizes, the volunteers and also the many teams that came to play and to add to the fun of the night.



Views and Reviews

Darkroom Restoration Project - Andrew Feeland

Signal Arts has had a darkroom for many years that fell into disuse but has been given a second lease of life in 2018. The darkroom has been cleaned up and now has a fully functional black and white enlarger!

A darkroom is a space where photographers of any caliber can practice the use of the analogue photographic process of printing images from film onto paper. The darkroom is a great way to see how far photography has come and can be still a way to create art. Anyone can stick a filter on an Instagram post, but the darkroom is a place where you can slowly craft and tweak an image to perfection. Being in a darkroom is a place where you can't rush through the process and have to take your time, patience pays off as you are eventually rewarded with a unique handmade print.

In order to achieve a perfect image, you have to take your time and pay attention to light in both the shooting and editing process, it can be a wonderful moment looking at your work for the very first time you have processed a print. The feeling of pride from seeing you have just created a beautiful work of art with both your hands and your mind, creating a truly authentic photograph that is yours alone, perfect or flawed, it is yours to cherish.

The darkroom will hopefully be open for renting in March and it will have all the chemicals premade in mixing trays. If a person wishes to learn darkroom procedures and processing film, an introductory session can be arranged and the session will be a one on one. If you are interested in participating in a workshop please get in touch for further details with us at info@signalartscenter.ie



Grayson Perry - Margaret Walsh

Best known as the Turner Prize cross dressing potter, Grayson Perry's series of tapestries entitled 'The Vanity of Small Differences' is currently exhibiting in the RHA Ely Place.

The six large scale tapestries made in conjunction with the Channel 4 BAFTA winning documentary series "All In The Best Possible Taste" seeks to explore what so fascinates and divides the British obsession and attitudes to class and culture.

The tapestries chart the life story of the central character Tim Rakewell and his rise from his poor working class roots in Sunderland, to owning a stately home due to his success as an app developer who sells his company to Virgin owner, Richard Branson, and finally his death after crashing his Ferrari in an effort to impress his trophy wife. Perry has said that he views this work as a Safari through the taste tribes of Britain.

Inspired by Hogarth's 18th century series of prints A Rake's Progress, each Tapestry is a nod to a classic religious painting from the Renaissance. The tapestries are rendered in wool, cotton and silk. Perry uses photoshop first and each tapestry is drawn out and colored in by hand and this handmade quality is apparent in each one. A mechanical loom is used to weave them.

This exhibition is, in my view, a brilliant and biting satire on 21st century attitudes to taste and consumerism and well worth a trip to see in person.



'The Vanity of Small Differences'

The exhibition runs in the Royal Hibernian Academy until the 19th of March.

Exhibiting Artists about their Work

Graham Shepherd

'Brief Encounters' - Tue 3rd - Sun 15th April

Artists do not have to be egotists to function well and produce quality work, many of them think they are esteemed and the world owes them a living. Not so. If someone has a talent and applies discipline to develop it, then having done so it's got to be their responsibility to give and share in the context of human fellowship.



'Untitled IV'

Actually art is not that important in the big scheme of things - but when we are burning the earth and debasing the political discourse, it is. Grotesque and cruel conflicts delivered into our sitting rooms, demean our fragile humanity, so the 'Arts' and all other personal creative activity become more valued, and often a place of refuge.

So, Art can enrich and validate our lives in such frightening times. and the variant forms it takes challenges us all to weave

our artistic endeavours into our dysfunctional world to give it all some meaning. Although we may be safer and in a comfort zone closer to some fantasy land, it is cardinally important that all art forms allow us to communicate with one another in a peaceful way.

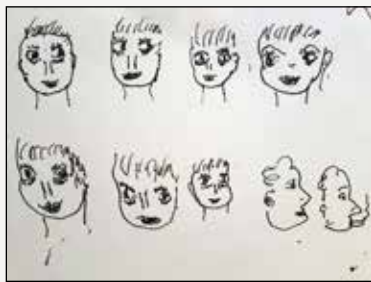
However, it is only now, in my later years that I can be relaxed about making pictures. Having worked as an employed graphic designer most of my working life, I do not think I would have had enough discipline and courage to be a working artist sufficient to earn a living. So, hats off to those who do it.

In the pictures I make, the need not to be stuck inside any genre is paramount; to feel free to go in different directions is the basic *modus operandi*. There is always that special pleasure when completing a piece of artwork. I appreciate that I have the time, interest and ability to do so. But it must be added that growing tomatoes and walking the dog by the sea are of equal importance.

Kinvara Nursing Home

'A Day in the Life' - Mon 16th - Sun 29th April

A Day in the Life is a collection of art portraying the vast and exciting talents of the residents and artists of Kinvara Nursing Home.

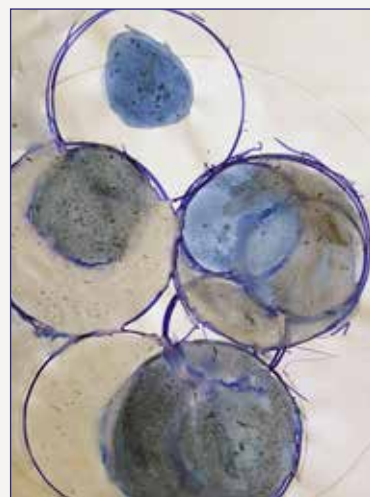


This group of artworks capture significant memories that each individual resident has come to experience growing up in Ireland. The inspiration reminisces on moments such as climbing

Nelsons Pillar, long evenings strolling through Delgany wood, screaming to their hearts content on the dodgems, ploughing season in Wexford, ladies at the flower stalls in Dublin city, James Joyce and the hustle and bustle along Bray promenade among many happy recollections

Once a week the residents attend art classes where they engage in a multitude of exciting and creative exercises, some familiar, majority not, which brings elements of enthusiasm and curiosity that can be seen in the pieces here today.

The work evokes a sense of nostalgia whilst accompanying contemporary ideas and methods through a variety of mediums.



Karen Hickey

'Clothed' - Mon 30th April - Sun 13th May

Clothed is a rummage through wardrobes and suitcases of folks we might have known. What will these storytellers, with their captivating colours and layers of texture and expression, tell of their life and times?



'The Ring Masters Wife'

Karen Hickey has always had a fascination with old photographs and paintings documenting people from the past. From witches to bar tenders, to the upper classes to those who had less, circus people, servants and railroad workers, Karen shows how a garment, with its fabric hanging on the body marking its impression, turns a person into someone who can be categorised. Her work observes those fortunate individuals who use clothes, not just for warmth or as a tool to cover themselves, but to form and shape themselves into how they wish to be perceived, she also acknowledges those who have no opportunity for this luxury and are clearly uncomfortable in their garment.

Karen uses her creative intuition to seek out the essence of a person at first glance - who are they when they speak their truths, what hides under the cascade of outfits and smiles? She considers herself to be an observer and a reader of people with an underlying urge to discover their truth and to recognise what is real in them.

Karen has been primarily focused around portrait and life drawing, with a desire to capture emotion and energy in a face. Having studied portrait drawing, life drawing and painting over the last 12 years, she now exercises her own expressive style with a limitless passion that drives her to create in abundance. Karen favours the medium of oil pastels for their exuberant colour and thick textures, which give voice to the character in the piece. Throughout 2017, her work was exhibited in a gallery in Dublin, in a solo show in Celbridge, a number of pieces were displayed at the Electric Picnic Festival and these (Picnic People) we'll shown again in the Leixlip Library in January 2018. A large number of her works have been installed in the new Google offices at Grand Canal Dock. She sells her art online through her Etsy store and via social media, with demand for her work growing steadily.

Exhibiting Artists about their Work

BAEC Students

'An Expressive Journey' - Mon 14th May – Sun 27th May

The Signal Arts Centre presents Bray Adult Education Centre, first and second year art groups "An Expressive Journey". is a collection of work developed and created by students discovering their personal journeys through The Arts.



Bray Adult Education Centre

The Art work encapsulates a multi-faceted array of inspired themes, as diverse in nature as the artists themselves. Using

the Art and Design elements the students exhibit their own individual, creative voice and interpretations of self-expression.

The work embraces an exciting array of mixed media pieces, including Painting, Drawing, Textile Art, Felt Making, Textile Printing and Ceramic, Wood, Sculpture and Mixed media. The use of colour, texture and surface pattern play an integral role in the individual's use of expression.

Most of our students come from Bray and the surrounding areas, most exhibitors are novices and have had little or no exposure to art and design. Their work embraces their courage to learn, to discover and to explore new things.

Cliondhna & Grainne Quinlan

'The House on Chicken Legs' - Mon 28th May – Sun 10th June

My work is very insular and reflective. I use symbols, mythologies and archetypes in my pictures and drawings to make sense of the various struggles in my psyche. I invent characters and create stories to act out my inner battles much like fairy stories are allegories of our darker selves and are windows to the growth of individuality and process of responsibility we all must take in our lives.



'Transformation'

I have always been drawn to traditional shamanic arts, they speak of timelessness and possibility that we have forgotten how to listen to. I apprenticed to a Mexican shaman for many years and learned how to listen to this voice and to fully accept responsibility for the moment to moment creation of my perception of reality. Now, in my art, I try as best I can to speak in this voice and communicate my vision of the life we all share together, allowing the viewer access to my own process of self-awareness in the hope that they might in turn gain insight into theirs.

My artwork has always been influenced by a craft aesthetic. I love beautiful colours, complex patterns and fine fabrics and papers. I went to NCAD for three years of textile design and for years after that made freestyle machine-embroidery pieces for framing and for wearing, exhibiting in Ireland and at quilt/textile art shows abroad. I just recently graduated from GMIT with a B.A. in fine art painting and design. - Cliondhna Quinlan



'The Little Mermaid'

For me story and imagery are intertwined. There cannot be one without the other. Words create pictures and images generate narratives. Fairy stories, with their bizarre characters and fantastical settings, suggest such a wealth of imagery that to consider any one tale is to conjure a pictorial cloudburst.

Like most people I was read fairytales as a young child and as an older child discovered other fairy stories, lesser known ones, or different variations of familiar tales. I realised how broad the world of the fairy tale was. Turning the pages of a single volume you could be transported to the heart of a German forest, a Russian palace, or to the garden of an emperor in China, where a nightingale sang sweetly.

In choosing fairytales as the subject for this exhibition, I wished in some small way to create my own versions of some of these worlds and the characters who adventured through them. To illustrate these kaleidoscopic narratives I chose watercolour for its rich colouring and delicate texture. I have also created some pen-and-ink renderings simply for the pleasure of becoming engrossed in some of the smaller details of the story and of the world that can get lost in the larger picture. - Grainne Quinlan

Signal Arts Society

'SAS 2018' - Mon 11th – Sun 24th June



Signal Arts Centre is pleased to present the 18th Annual Exhibition of works by members of the Signal Arts Society. The exhibition will run from 11th – 24th June 2018 with the Opening Reception on Sunday 17th June from 3-5pm.

This exhibition is a showcase for members of the Signal Arts Society and, being a group show, includes a diverse range of content, a varied selection of mediums and always something to delight even the most discerning of palettes. The Signal Arts Society was launched in 2001 and is affiliated with Signal Arts Centre. The society consists of artists working in many different arts practices but membership is not exclusive to artists, anybody with an interest in the arts can join.

The Society offers a range of facilities and discounts to members. For more information on Signal Arts Society go to www.signalartscentre.ie and click on the Society's tab. Alternatively the Society may be contacted through Signal Arts Centre.



Signal Book Club 2018

First Tuesday of every month
at 5 pm in the gallery

3rd April

The Woman in the Window

by AJ Finn

8th May

Still Me

by Jojo Moyes

5th June

A Long Way from Home

by Peter Carey

SIGNAL ARTS CENTRE, 1 ALBERT AVENUE, BRAY

Childrens Art Classes

FOR AGES 7 - 12

THURSDAYS
3.00 PM - 4.30 PM

LIMITED PLACES STILL AVAILABLE

6 CLASSES
€60.00

BOOKING IS ESSENTIAL

PHONE: 01 276 2039
EMAIL: INFO@SIGNALARTSCENTRE.IE

**Closing date for submissions for
the next Newsletter: 16th June**

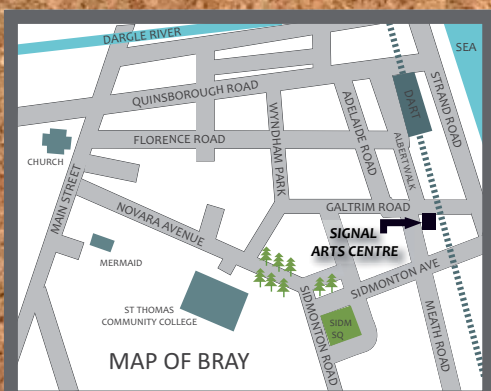
Bray Arts Club

Performance Nights

Mondays 8 pm at the Martello

3rd April, 7th May, 12th June

See www.brayarts.com



Signal Arts Centre

1 Albert Avenue,
Bray, Co. Wicklow.

Tel: 01 2762039

Fax: 01 2869982

www.signalartscentre.ie
info@signalartscentre.ie

Gallery Hours

Monday to Friday 10 - 1 and 2 - 5
Saturday and Sunday 10 - 5

Office Hours

Monday to Friday 9 - 1 and 2 - 5



This project is funded
by the Department
of Social Protection