



SIGNAL ARTS NEWSLETTER

Volume 15

January - March 2018

Issue 1



Willow Basket by Aoife Patterson



SIGNAL ARTS SOCIETY

MEMBERSHIP OFFERS YOU:

A 10% discount

- On any purchase of artwork on sale in Signal Arts Centre
- On life drawing and other art courses
- On the hire of darkroom and ceramics facilities

Participation in the

Annual Signal Arts Society Exhibition

(subject to selection)

Reduced commission on sales of your work from 25% to 15%

Our **quarterly newsletter** will keep you in touch with what is happening in the arts community. You have the opportunity to publish a profile of your work, advertise your upcoming shows or projects, write about your favourite artist or review an exhibition that impressed you.

The opportunity to display images of your work and an artist's statement on **a page of the Signal website**. See links on the SAS page on the Signal website for examples

Invitations to exhibition openings and other cultural events organised by the Centre.

Content

3

News from Claire
New Staff
2018 Submissions call

4/5

John Cooney Tribute
Signal Arts Ceramics Workshop
Signal Arts Singing Group
Festina Lente Workshops

6/7

Exhibition Programme Sept - Dec 2017

8/9

News & Reviews

Bray Comedy Festival
Paul Mosse/ Juliette Harvey Exhibition
Bray Children's Myth & Art Trail Project
Loving Vincent Film Review

10

Exhibiting Artist Profiles

Bray Adult Education Centre Group
Monika Ferris
Tres Brazilian Culture Centre

11

Exhibiting Artist Profiles

Zoe McGrath
Erika Tyner
Andrea Paul & Aoife Patterson

12

Noticeboard

BOARD OF DIRECTORS
Michelle Fullam (Chairperson)
Linda O'Neill (Secretary)
Eleanor Phillips
Blaithin O'Brien
Colum O'Neill
Yanny Petters
Doug Ross

CEP MANAGEMENT COMMITTEE

Michelle Fullam
Eleanor Phillips (Treasurer)
Colum O'Neill
Linda O'Neill (PDO)
Greg Murray

NEWSLETTER TEAM
Claire Flood:
Co-ordinator, editing
production management
Aidan Lombard:
Layout, editing, text setting
James Nolan:
Photography
Kaisa Ypya & Jade Butler:
Newsletter Committee

**SIGNAL ARTS SOCIETY
COMMITTEE**
Colum O'Neill (Secretary)
Greg Murray

CE SUPERVISOR
Claire Flood

ADMIN STAFF
Geraldine Smith
Ger Keenan
Becky Dunford

STAFF ARTISTS
Jade Butler
Conor Rafferty
James Nolan
Sean Nolan
Stephanie Burke
James Hayes
Aidan Lombard
Margaret Walsh
Ciaran Coogan
Donal Smyth
Audrey Kane
Sean Murray

OFFICE HOURS
Mon to Fri 9.00 - 1.00 and 2.00 - 5.00
GALLERY HOURS
Monday to Friday 10 - 1 and 2 - 5
Sat and Sun 10 - 5
Signal Arts Centre, 1 Albert Avenue,
Bray, Co. Wicklow
Tel: 01 2762039 - Fax: 01 2869982
Email: info@signalartscentre.ie
Web: www.signalartscentre.ie

Signal Arts Centre is represented on the following: Bray Partnership,
Wicklow Arts Network, Bray Chamber of Commerce.
Contact Signal Arts Society: signalsociety@gmail.com

Opinions expressed in this magazine will not always be those of
Signal Arts Centre and of course we reserve the right to edit all
submissions where necessary.

Please address all
Newsletter correspondence
to Claire Flood
at Signal Arts Centre

Printed by Central Press, Bray

New Staff

Sean is a Graphic Designer with additional expertise in 3D modelling, technical drawing and sketching.

His pastimes include hiking, martial arts and spending ridiculous amounts of time crafting Sci-Fi miniatures.



Often mistaken for a young Pierce Brosnan, Conor chose a different path to the Navan native by attaining a Degree in Art History in UCD and completing his M.A. in Arts Management & Cultural Policy in Queens University, Belfast.

Conor's hobbies include long distance marathons, rock climbing and abseiling. Recently he narrowly missed setting a new Irish record in the NYC marathon by 3/100ths of a second.

Equipped with extreme levels of enthusiasm and energy, Conor is determined to bring these qualities to his work in Signal Arts.

Graduating from West Wales School of the Arts in 2010, Jade is a visual artist working in the medium of oil painting.

Jade has exhibited in Ireland and the UK and is currently based in Dublin.

Current work draws inspiration from still life painting, particularly the Dutch and Flemish schools.

Her work is a contemporary take on traditional still life and it's associated themes.



Jade has recently exhibited as part of the Society of Women Artists Annual Exhibition in London and been shortlisted for both the Royal Scottish Academy and the Royal Ulster Academy's Annual Exhibitions.

News from Claire

A very Happy New Year to everyone and we are especially hoping that it will be a happier year for Signal Arts Centre.



It has been a very challenging year for us all but true to form we have embraced it and are looking forward to a great year for the Centre.

We are already thinking about St Patricks Day, thinking of themes etc. to make it even more memorable than previous years.

We propose to get all our artists to engage with the various classes that take place in the Centre to get involved in the creating and making of whatever characters we decide upon. Always a delight and something we all look forward to.

The Christmas Fair is taking place in the Centre until Christmas Eve so do try to get down to have a look at all the beautiful creations and maybe purchase a bespoke gift for your nearest and dearest.

We have also established our new blog which can be found at <https://signalartsmedia.wordpress.com/> a link is also available on our homepage.

Looking forward to seeing you all at some of the events that will be taking place in the new year.

Claire Flood

Exhibition Submission Call for 2019

Signal is now accepting submissions for exhibitions in 2019

CLOSING DATE: 5 p.m. Friday 30th March 2019

When submitting your application, please include the following:

A Submission proposal including title, covering what you would hope to exhibit if you were successful.

A Minimum of six images in digital format clearly marked with your name and title of picture. (all images should be suitable for print reproduction (300dpi) jpeg format, not exceeding 5mb in size)

Artist CV (art related only)

Artist Statement (for PR purposes)

Please enclose a stamped addressed envelope if you require your photos etc. to be returned to you.

Please feel free to call into the gallery at any time to assess size, dimensions etc.

We usually hold openings every two weeks on a Thursday or Friday evening that you would be more than welcome to attend, no invitation necessary.

There is an exhibition fee of €250 to be paid by the artist if selected

John Cooney Tribute

Foreword By Claire Flood:

John attended classes in Signal Arts Centre for many years, even before I started here, which is a long time!

Every Friday without fail he would arrive with his suitcase full of art materials.

He was a wonderful wordsmith and would create images to go with his poetry. He was an absolute gentleman and had a brilliant mind, articulate and creative; he is sadly missed by all here.

~Rest Gently John



FOR THE ANCIENTS

There is a land both near and far.
I heard an angel sing of it sometime ago
when I was old and I was young.
And in her song I heard the waves roll in
to make the shoreline of a sunny clime .

So I set sail to find that promised isle
alone it seemed
til I was joined by a gathering host,
onwards we sailed a thousand strong,
we were children then of the cloistral
moon,
and we were fireflies dancing on the
myriad sea.

At dawn we stood along a curving beach,
where grasses waved in a gentle wind.
A girl stepped from the shadows there ,
her robe was purple, like the desert sage,
and her wand was golden like the sun.

She paused awhile, but soon she spoke.
And each man heard his own name there,
and saw the red flowers blowing in the
quiet fields
where father stood to mend his son.
Then she touched each soldier with her
wand of gold.
The shadows stirred, and she was gone .

Though I have long awoken from that
dream
still I heed the angels call. And I will run
through dappled grass, to pluck the
blossoms
of her lullaby and know the voice that
bade
me venture far and farther still was but
the voice that called me home.

- John Cooney R.I.P

Signal Arts Ceramics Workshops - James Hayes

The six week long Adult Ceramics classes are a wonderful opportunity to get creative in the relaxed atmosphere of the Signal Arts Centre ceramics room. The classes are very limited in size so individual attention and tuition is guaranteed. The class focuses on basic techniques that are the foundations of all ceramic production and encourages individual creativity. Students will be introduced to pinch pots, coil pots, slab builds and lidded pots, and progress on to more complex combinations of these techniques. Students also have the chance to work on the wheel, a fun process that is at the same time very challenging and reveals to the students how much skill goes into the finely crafted pottery they might see in shops around the country.

The great thing about the ceramics class (I believe) is that once the basic building techniques are understood there is lots of room for creativity and imagination. Case in point, I showed the class how to build very organic vases using rolled slabs, and they jumped on this idea and ran with it! I am always delighted and impressed with the broad range of work that can be created given the same set of instructions. They followed up my basic ideas by also rolling various textures, flowers and leaves into the clay.



I am so pleased when I open the kiln and see the bright colours of the glazed pieces! The students take the simple colours available and make the most of the combinations. One student used the simple slab pot technique to create a pot planter, and then decorated it with white, a mixture of red and orange for the large Japanese style sun, and hand painted in black the flock of birds.



This box planter was also made using the slab technique, and then scratched to create an organic grassy texture.

Another student has taken the pinch pot technique to new heights, creating delightful animal characters. Due to the popularity of the current two classes on Wednesday mornings and Thursday afternoons we are setting up a third class for Tuesday afternoons.

Contact Signal ASAP to avoid dissapointment!



Signal Arts Singing Group - Kaisa Ypya

Our very own Wednesday morning Sunbeam House group consisting of six members, Mathew Davis, Daniel McDyer, Shauna O'Leary, Shannon Joyce, Mathew McAvoy and Steven Doherty have been busy for the last few weeks making various different musical instruments and rehearsing for their big, up-coming gig. This group is a mix of colourful personalities, bubblyness and youthful energy and every member of the group has always had a keen interest on everything relating to music.

As this Sunbeam group has a big love for music, especially, pop, rock and country, my co-facilitator Margaret Walsh, introduced an idea to form a band which everyone in the group embraced with open arms, and since then the enthusiasm and anticipation has just been growing enormously.

'Doom Thunder' will be performing a set of three different songs in the near future and is welcoming everyone to come to see them. You can expect to see spectacular outfits, world class jamming and electric atmosphere in a rhythm of both current and old music influences. I would like to take this opportunity to invite everyone who loves music and wants come to give Doom Thunder their support. The members of Doom Thunder are still designing their invitations for the gig and they are working very hard to make sure that everything is ready when the date for the gig has been finalised.

There are also many others who will be giving us a helping hand with getting everything ready for the main event; the musician Niall Donnelly will be providing us with equipment such as an amplifier and our own facilitator Ciarán Coogan will be the man behind everything technical, such as setting up all the equipment and doing the sound check. The band members are in charge of stage design and they will make sure that the stage will look just as colourful as their performances are going to be!



Festina Lente Mural - Kaisa Ypya

A couple of months ago Signal Arts Centre was approached by Festina Lente looking for our staff artists to help their students to create some outdoor art for their vast grounds where many educational programs, mainly equestrian and horticulture related courses, take place.



Myself and my fellow facilitators, Stephanie Burke and Ciarán Coogan, have been given an opportunity to work in the picturesque lands of Festina Lente. The grounds that consist of beautiful Victorian era gardens, vegetable allotments, horse stables, woodlands, cafe and garden centre shop are all part of this hidden gem just a 5 minute drive from Bray town centre. In these tranquil surroundings students can learn horsemanship and gardening, Festina Lente also provides different types of workshops throughout the year.

We are pleased to be getting a few hours to enjoy the haven of Festina Lente on a weekly basis, we started working with a large group of their students, and as a joint decision with the students, we decided to design and make a mural for the gardens. The ideas behind the designs are based on the students own interests, such as horses, plants and magic.

We also created a story about a legend of Festina Lente and everyone in the group has their own input in it. The story explains how Festina Lente became a such wonderful and

peaceful place for everyone to be at, and the plan is that the story will be included in the various designs of the mural, in both picture and written form.

Each one of the students has made their own ceramic tiles which will be part of the mural. The mural is going to be largely in mixed media form containing paintings, ceramics and mosaic art.

The aim of the project is to get the mural to reflect the inclusive culture and beauty of the nature and many animals of Festina Lente. The mural itself is going to be built on a separate piece of timber so that it will be easily transportable, as this is only a tempory location for this unique learning facility.

The name "Festina Lente" – meaning "hasten slowly" - really resonates with this otherworldly place and I hope that when the mural is ready – which will be in a couple of weeks time - it's spirit will be resonating with the people of Festina Lente too.





SIGNAL ARTS CENTRE

1 Albert Avenue, Bray, Co. Wicklow.

Gallery Opening Hours: Monday to Friday 10 - 1 and 2 - 5 | Saturday and Sunday 10 - 5 | For more information please check: www.signalartscentre.ie



Wicklow County Council
Wicklow Arts Centre
Wicklow County Council

EXHIBITIONS PROGRAMME JANUARY - MARCH 2018

BRAY ADULT EDUCATION CENTRE

'A Celebration'

Monday 8th January - Sunday 21st January

Opening Reception:

Thurs 11th January 7-9pm



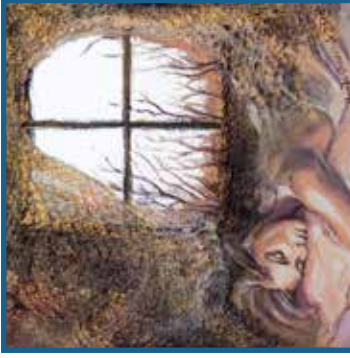
MONIKA FERRIS

'Reflection Within The Art Of Portrait'

Monday 22nd January – Sunday 4th February

Opening Reception:

Thurs 25th January 7-9pm



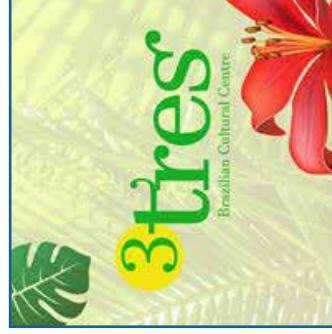
TRES BRAZILIAN CULTURAL CENTRE

'Facets Of Brazil'

Monday 5th February – Sunday 18th February

Opening Reception:

Sunday 11th February 3-5pm



ZOE MCGRATH
'Enlightened'

Monday 19th February - Sunday 4th March

Opening Reception:
Friday 23rd February 7-9pm



ERIKA TYNER

'Sun Rising - The Power Of The Stones'

Monday 5th March - Sunday 18th March

Opening Reception:
Sunday 11th March 3-5pm



ANDREA PAUL & AOIFE PATTERSON

'Willow And Clay'

Monday 19th Mar - Sunday 1st April

Opening Reception:
Friday 23rd March 7-9pm



Views and Reviews

Bray Comedy Festival - Sean Nolan

Bray Comedy Festival returns to Bray from Wednesday February 14th until Sunday February 18th 2018 with more of the very best Irish and international acts.

Growing bigger and better every single year, the 2018 Bray Comedy Festival will include line up and solo shows, kids comedy, improv, science, magic, music and much, much more.

Past acts have included Seann Walsh, Ardal O' Hanlon, PJ Gallagher, Karl Spain and many more and in 2018 we bring lots of brand new, funny and famous faces to one of Ireland's fastest growing festivals.

Preliminary ticket sales and updates on all the acts and shows will be available from www.braycomedyfest.ie from Wednesday, December 6th!

We can't wait to see you all for some guaranteed craic at Bray Comedy Festival 2018!

Signal Arts Centre is one of the new venues for the festival, there will be 3 separate solo shows in the gallery.

Friday 16th, Saturday 17th and Sunday 18th February, they will be 3 intimate solo shows with a display of three different styles of comedy. Times and comedians will be confirmed in January – watch our website for further details: www.signalartscentre.ie



Paul Mosse/ Juliette Harvey Exhibition - Erika Tyner

Paul Mosse's retrospective 'What's with the Apocalypse?' occupies three galleries, bringing together an impressive collection of work, ranging from 1967 to the present. Mosse is best known for his use of non-traditional media and the creation of precariously-balanced sculptural pieces. From his early work one can observe the artist's progression from geometric colour drawings in the 1960s to layered and delicately sculpted work in recent years. His later work is typified with the centrepiece, *UNTITLED (Pink)* (2011), a chaotic, mixed media sculpture which appears in a state of dereliction or collapse, while also somehow managing to maintain a delicate equilibrium.

UNTITLED (Pink) (2011)

A tangible shift in style is evident in the intervening years, with Mosse's artworks becoming more layered and textured, causing the artist to refer to them as "two-and-a-half dimensional painting". Mosse builds complex surfaces from found materials and detritus that echo the chaos of the natural world. Pieces are allowed to decay organically – a process that prompts the viewer to contemplate human aging and mortality. Mosse uses materials such as lint, grit, wooden skewers, nails and sawdust, mixed with glue and acrylic in his work. In the Main Gallery, the central sculptures loom large and echo hedgerows. The wall hung pieces are thick, multi-layered, intricate, colourful and hover like dark jigsaw pieces.

Car Glass (2008) is complex with layers of wood, perspex with open spaces packed with shavings. Mosse intuitively pierces robust layers to create negative space. Pieces are allowed to organically decay.

Car Glass (2008) To highlight the artist's extensive use of unorthodox materials, VISUAL commissioned anthropologist

Juliette Harvey to visit his studio and harvest a collection of items found there. The resulting work is 'Materials Library', a collection of intriguing items that functions almost as a museum-style cabinets of curiosities. the collection comprises an unusual range of manmade and organic specimens: cobweb sculptures formed by grit and leaves; deconstructed nails and lead shot are displayed in jars; examples of antique lace and taxidermy specimens are presented in glass cases. Materials Library, Juliette Harvey Audiences have the opportunity to engage directly with some of these exhibits and touch is encouraged. Tours for visitors with visual impairments are also available. Mosse's work challenges us to think about transformative cyclical nature of decay and renewal in art and in life, and of Mosse's favourite material 'Time'! This is an intriguing sensory exhibition and worthy of multiple visits and contemplation.

Erika Tyner is a visual artist and photographer working in County Wicklow.



Car Glass (2008)



Untitled (Pink) (2011)

Views and Reviews

Bray Children's Myth & Art Trail Project - Donna Carroll

If you've taken a walk along the busy promenade in Bray, you may have noticed a number of brightly coloured scenes being installed in various spots along the seafront. These 5 murals are the result of a project created by visual arts curator Donna Carroll, designed by renowned children's author and illustrator Chris Judge and installed by the wonderful team of Triskill Designs with the essential input of dozens of young Bray residents. The story follows a young giant adventurer called Maeve as she sets out to find a home for her people and battles many monsters along the way.



Funded by contributions from entirely local sources such as Platform Pizza; Megazyme; Bray Credit Union as well as the support of Bray Municipal District. The tale

was devised through a series of story workshops with children aged 4 – 9 years old, facilitated by Donna and Chris. Almost 40 local children took part in creating a new site specific myth about Bray to be translated in to a series of bright eye-catching images in 5 murals along the popular seafront.

In early July, Donna approached Bray Municipal District with a proposal to create a unique children's art trail to give new

life to some areas along the seafront. They immediately recognised the benefit it could have to the kids of Bray and the impact on the seafront and gave their full support. The amazing



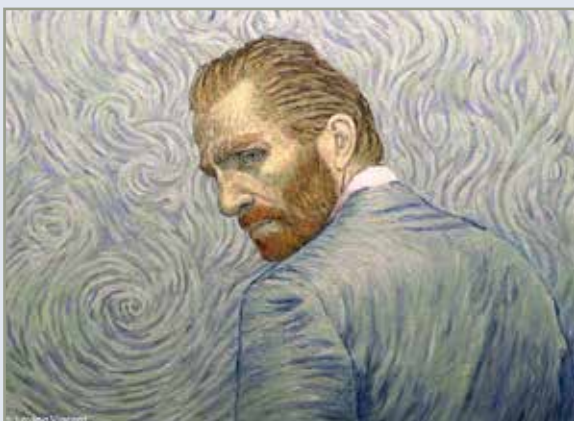
Chris Judge came on board and soon after Triskill Design agreed to install the work. The sites were chosen and the children invited through local and social media to participate in 2 workshops in August to create the story for the murals. Chris went away with all the ideas and created these beautiful, vibrant illustrations, incorporating many of the ideas generated at the workshop and passed them on to Triskill Designs, who have been meticulously hand painting each one in the 5 selected locations - the shelter near the bandstand, the 3 shelter walls near the seafront playground and a location at the base of Bray Head.

The full story will be available as a free PDF with an accompanying map available for download on Bray.ie and as a physical map on the children's menu at Platform Pizza. You can travel along the trail using the map and reading the story together with your family or use your imaginations and create your own adventure with Maeve and the creatures she meets.



Loving Vincent - Sean Nolan

The truth behind the mysterious death of painter Vincent Van Gogh, is gradually revealed by the intrigued son of the postman who used to deliver his daily letters to his brother and financial backer Theo.



This document based story telling structure results in many flashbacks, in which the colour palate switches from a vivid saturation of yellows and blues and reds to black and white. Colour is one of the most important elements of the presentation, as the whole film has been shot first on film then hand painted and animated in the imitable style of the Dutch master himself. It is instantly jaw-dropping but can also be frustratingly jarring because the animation is hand painted and the frames per second are not high enough to create the

smooth transitions you might be used to from other animated films. The backgrounds can be quite minimal and static; just fields of yellow or navy blue, or simply stills of Van Gogh's iconic paintings, in which the more detailed and animated actors perform, which again creates this odd mismatching in the viewing. The actors are animated using rotoscoping (tracing over an filmed image) which has been seen in Richard Linklater's "Waking Life" and "A Scanner Darkly" to better effect.

Apart from that the script also never seems to settle into a natural method of communicating whats going on and instead relies too much forced exposition, with large back and forth conversations being recited purely for the viewer's benefit. The plot is half documentary biopic half fictitious thriller, at one point deciding it wants to be a murder mystery suggesting killers and motives and seemingly forgetting it is based on true events.

In terms of tone the film seems happy to hold true to the often harrowing mental anguish the artist suffered for large parts of his life, which can be a little heavy going. The only light-hearted moments, and the real star of the picture is the performance of Saoirse Ronan as Marguerite Gachet.

It took 100 artists 6 years to animate this film and it is an incredible feat of artistry but ultimately is lacking in any great new insights or points of view. It ends up being a film more about artistic endeavour than telling a great story and maybe that's apt.

Exhibiting Artists about their Work

Bray Adult Education Centre 'A Celebration' - Monday 8th Jan - Sunday 21st Jan

Bray Adult Education Centre (BAEC) is in Bray, County Wicklow. The Centre exists to provide a second chance in education to adult learners. For the past decade and a half it has seen some of the most significant developments in education in Bray.

Today there are over 150 students attending a variety of certified courses at BAEC. Subjects include Science, History, Information Technology (including Comp TIA A+), Childcare Studies, Art, Metalwork, Woodwork and ESOL. The Centre also exists to profile and promote student work.

The BAEC Art/ Craft/ Design Exhibition this year is a celebration of students' work - past and present.



Monika Ferris

'Reflection Within The Art Of Portrait' - Monday 22nd Jan - Sunday 4th Feb



I am a Portrait artist from Poland living in Dublin since 2007. A graduate with a Diploma in Visual Communication in 2007 and Certificate in Arts Administration from Blackrock's BFEI in 2015, with more than 15 years experience in Art. This includes many commissions and exhibitions in Poland and Ireland; People's Art Stephens Green Exhibition, DLR Pop-up Shop Exhibition, Merrion Square Open-Air Gallery every Sunday.

The sense of existence couldn't leave me alone as long I remember when I was a child. I thought to myself what if all the people around me just act in front of me and hide something behind their faces. As a child I was always drawing, that was my way of expression. When I was 14 I drew my first portrait which later on was sold in a local Gallery.

My ability to capture a person's face is a talent which I always had. The following quote "The right dimensions are the first conditions of the perfection in art", of Leonardo da Vinci, inspired me to reach for higher standards of work. My eyes were opened again when I created 3D sculptured faces, as part of my Diploma in 2007. Studying sculptured faces I experienced how important shades are in simple 2D pencil drawing. There is

nothing unexplained in a drawing, if the shade is not defined, the portrait might be wrong.

Drawing a portrait after this experience wasn't the same. A colour of a skin had nothing to do with the values. The depth of a shade is actually the structure of how the face is built. Some of the shades are very specific, it's because they indicate the face's character. The deeper it goes the different tone of shades appears in the drawing.

When looking at a model in 3D it explains a lot of the values; other than getting the proportion right, it also catches the personality of the model, where just a tiny line in mouth edging could totally change the perspective of a person. From a happy person to a miserable looking face with no personality. My interest in Arts helped me to learn a lot about myself. In my style there is visible movements of brush or pencil lines. The expression is used to outline the reflection and magical presentation of the portrait.

It's been influenced by J.M.W. Turner's dreamy way of painting. The subject of dancers and lady's portraits that appears in my art was inspired by Edward Degas and many other Masters. Recently I include pieces of mirrors in my paintings as a further studies of exploring portrait expression. Looking for the answer, what actually is behind People's faces when they engage with my world and art. The intention is to capture viewer's reaction.

Tres Brazilian Cultural Centre 'Facets Of Brazil' - Monday 5th Feb - Sunday 18th Feb



Tres Brazilian Cultural Centre is delighted to have the opportunity to hold their first group exhibition in the Signal Arts Centre, Bray from 5 Feb - 18 February 2018.

'Facets of Brazil' is an art project developed by the Brazilian photographer and entrepreneur Elis Taves O'Sullivan. Taves is the Creative Director for the Tres Brazilian Cultural Centre. She envisions showcasing a number of Brazilian visual artists' exhibitions around Ireland over the coming years. Tres BCC represented the work of Claudia Coutinho, a Brazilian artist who had her first solo exhibition recently in Dublin at The Athena Room@Sol Art.

For this first group exhibition, the curatorial process will focus on the individual practices and techniques rather than the existentialism of each story behind the artist's life and experience. The artists will be free to showcase their work, expressing the Brazilian culture in their own individual styles. 'Facets of Brazil' will put emphasis on the diversity of work produced through multiple media types with works from photographers, painters, illustrators, sculptors, etc. Visitors will have the chance to appreciate contemporary and genuine Brazilian art, showcasing one style to another and one region of Brazil to another. The body of work to be displayed is a small sample of the many variations of different shades, tones, marks and colours spread across multiple creative contemporaneous artwork throughout the Brazilian art world.

As part of the art educational programme of the Tres BCC, a series of talks will be organised during the exhibition.

Tres BCC is already known for organising events such as "Brazil Meets Bray" and has been participating in the annual Culture night programme since 2016; all of these events specifically target the local community. The aim of the Centre is to showcase Brazilian culture to a multicultural audience, as Ireland is portrayed today.

Exhibiting Artists about their Work

Zoe McGrath

'Enlightened' - Mon 19th Feb - Sun 4th Mar

My Journey into the world of art began as soon as I had the ability to hold a crayon. As a child I would spend hours boldly blending colours together in my own way that felt good. In my experience with the love affair that is art, isn't this what it's all about? Pure self-expression with colour, love & joy?

My journey has brought me from exhibiting on Merrion Square, to my painting 'Little Girl Running' being the very first painting sold at the opening of the Arkangel Gallery in Listowel, Co Kerry. The Arkangel Gallery went on to sell many more of my pieces over the years. I have also had two of my own exhibitions both of which were extremely successful.

At my first exhibition I was approached by the founder of St-Art, a new business group who specialize in promoting & marketing the work of artists within their group. They exhibited & sold many of my pieces over a number of years - it was a fantastic opportunity & paved the way for many new exciting doors to open for me as a result.



Erika Tyner

'Sun Rising - The Power Of The Stones' - Monday 5th Mar - Sunday 18th Mar

The idea that progress is linear and that we become more knowledgeable and in control of our fate with time could be a myth. In my art practice I explore the idea of The Cult of Progress, where society is progressing technologically at such a speed that we are leaving our folk knowledge and perhaps our humanity behind. Hence the idea of 'The Cult of Progress' which is an overarching theme of my work - 'where the future is seen as brighter and civilised while the past is dark and barbarous', (Brennan, The Boyne Valley Vision, 1989).

'Sun Rising - The Power of the Stones' celebrates our precious Megalithic art in the Boyne Valley. These mounds were not just the burial sites of our ancestors, but more likely earlier places of solar alignment and ritual. They were built at the time of an organised agricultural society when our forefathers possessed engineering, astronomy, geometry and artistic skills. They watched the cycles of the sun and moon, built mounds to align perfectly with the rising or setting sun at the winter solstice, spring and autumn equinoxes. They valued their life, their light, their harvest.

They tried to make sense of this world, etched what they saw on stone - the only material they had that would last. There are over 280 decorated stones at the large tomb at Knowth alone. Coming face to face with them has a strong primeval impact. Although mainly abstract, the megalithic art most likely expresses our ancestor's beliefs about life, death and their understanding of time the universe. Just like us they were trying to make sense of our little lives in this vast cosmos.



Andrea Paul & Aoife Patterson **'Willow And Clay'** - Monday 19th Mar - Sunday 1st Apr

We are delighted to be sharing this exhibition space, as it gives us the opportunity to showcase our work and our shared admiration of the creative process.

Andrea Paul

My Workspace is surrounded by "my treasures" - items I have found, both natural and manmade, that provide me with inspiration for my work. It could be the shape, colour or texture of these found objects that gives me a starting point. I like to experiment with different clay bodies, and enjoy manipulating the clay, reacting to the material and the way it handles. The texture of the clay often informs the finished piece.



Aoife Patterson

Traditional willow basket making is intriguing to me. The patterns, sequences and forms the willow lends itself to for basket weaving to be made is incredible. Thousands of years of information and technology stored in every basket that is made. It is not just me making a basket, it's all those people who have gone before.



Signal Book Club 2018

First Tuesday of every month
at 5 pm in the gallery

January 9th

A Death in the Family

by Karl Ove Knausgaard

February 6th

When Light is like Water

by Molly McCluskey

March 6th

Lincoln in the Bardo

by George Saunders

SIGNAL ARTS CENTRE CHRISTMAS CRAFT FAIR



4th - 24th December 10am - 5pm

Open 7 days a week



Signal Arts Centre,
1 Albert Avenue, Bray

Phone: 01 276 2039
Email: info@signalartscentre.ie

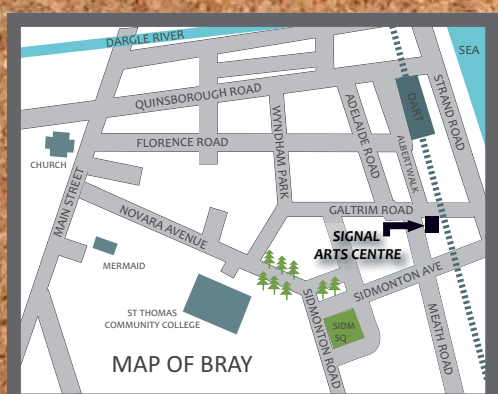
Closing date for submissions for
the next Newsletter: 16th May 2018

Bray Arts Club Performance Nights

Mondays 8 pm at the Martello

Jan (TBC), 5TH Feb, 5TH Mar

See www.brayarts.com



Signal Arts Centre

1 Albert Avenue,
Bray, Co. Wicklow.

Tel: 01 2762039

Fax: 01 2869982

www.signalartscentre.ie
info@signalartscentre.ie

Gallery Hours

Monday to Friday 10 - 1 and 2 - 5
Saturday and Sunday 10 - 5

Office Hours

Monday to Friday 9 - 1 and 2 - 5



This project is funded
by the Department
of Social Protection