



SIGNAL ARTS NEWSLETTER

Volume 16

October - December 2019

Issue 4



Jim Morrison



SIGNAL ARTS SOCIETY

MEMBERSHIP OFFERS YOU:

A 10% discount

- On any purchase of artwork on sale in Signal Arts Centre.
- On the price of classes run by the Signal Arts Centre
- On the hire of darkroom and ceramics facilities
- On purchases made in Cafe Letterario Gatta Nera on the Albert Walk.

Participation in the
Annual Signal Arts Society Exhibition
(subject to selection)

Reduced commission on sales of your work
from 25% to 15%

Our **Quarterly newsletter**

Invitations to exhibition openings and other
cultural events organised by the Signal Arts Centre.

Opportunity to have a piece published in the
newsletter relating to your work (subject to selection)
to have a page on the Signal Arts Centre's website with
images of your work and links to your own website and
social media pages.

Content

3

News from Claire.
SAS Members News
New Staff
Signal Annual Open Winner 2019

4/5

Culture Night 2019 (Environment)

6/7

Exhibition programme
October - December 2019

8

Laurence O'Toole, Signal Annual Open winner
2019
Jim Morrison Exhibition (A Celebration)

9

Exhibiting Artists about their work
Yvonne Leon 'Silent Stories' Figurative Ceramics
Meitheal, 'Rust & Harvest'

10

Exhibiting Artists about their work
Michelle Fullam, 'Solar Bodies, Lunar Souls'
Fiona Chan, 'My Heart is an Ocean'

11

Exhibiting Artists about their work
Bray Artists Circle, 'The Way We Art'
The Christmas Fair, Signal Arts Centre

12

Noticeboard

BOARD OF DIRECTORS

Emma Finucane (Chairperson)
Oona McFarland (Treasurer)
Eleanor Phillips (Secretary)
Michelle Fullam
Ger Keenan
Colum O'Neill
Linda O'Neill
Douglas Ross

CEP MANAGEMENT COMMITTEE

Emma Finucane
Oona McFarland
Eleanor Phillips
Colum O'Neill
Greg Murray (PDO)

NEWSLETTER TEAM

Claire Flood:
Co-ordinator, editing,
production management.

John McCann:
Layout, editing, printing.

Photography - Jonathan Higgins
Anna O'Rourke, John McCann

Newsletter Committee
Kaisa Ypya, Jade Butler

SIGNAL ARTS SOCIETY COMMITTEE

Gill Cassidy, Ger Keenan, Deirdre Ridgway
Conor Rafferty, Biddy Scott, Erika Doyle,
Margaret Walsh

CE SUPERVISOR

Claire Flood

ADMIN STAFF

Conor Rafferty
Beata Piotrowska
Alva Smith

STAFF ARTISTS

Jade Butler
Anna O'Rourke
James Hayes
Claire Jeffares
Ciaran Coogan
Donal Smyth
Olive Merry
Andrew Freeland
Lorna Lennon
Kaisa Ypya
John McCann
Jonathan Higgins
Carmel O'Dwyer

OFFICE HOURS

Mon to Fri 9.00 - 1.00 and 2.00 - 5.00

GALLERY HOURS

Monday to Friday 10 - 1 and 2 - 5
Sat and Sun 10 - 5

Signal Arts Centre, 1 Albert Avenue,
Bray, Co. Wicklow

Tel: 01 2762039 - Fax: 01 2869982

Email: info@signalartscentre.ie

Web: www.signalartscentre.ie

Signal Arts Centre is represented on the following: Bray Partnership,
Wicklow Arts Network, Bray Chamber of Commerce.
Contact Signal Arts Society: signalsociety@gmail.com

Opinions expressed in this magazine will not always be those of
Signal Arts Centre and of course we reserve the right to edit all
submissions where necessary.

Printed by Central Press, Bray

Please address all
Newsletter correspondence
to Claire Flood
at Signal Arts Centre

New Staff



Carmel O'Dwyer studied art and design at BIFE Bray, and then continued to weave art into her life, developing her own style, which often speaks of Celtic spirituality. She also studied Holistic Health at BIFE and then went on to do a business degree at IADT, Dun Laoghaire. She has a keen interest in Art Therapy, which focuses more on the process of creating rather than the end result and is used as a means of expression in counselling and psychotherapy. She plans to do further study in this area. Carmel is also a classical hatha yoga teacher of 20 years; she runs weekly classes near her home in Greystones.



SAS members NEWS!

The Signal Arts Society will host a Meet and Greet evening on Friday 15th November from 6:30pm to 8:30pm in the Signal Arts Centre. This event is open to members and non-members and will provide an opportunity for those in attendance to enjoy a glass of wine in a relaxed atmosphere while engaging with other arts practitioners and those with a keen interest in the arts. Attendees will be able to engage with the Society directly by offering their views on their current level of satisfaction with the programme while providing suggestions as to how it could be improved.

2020 will mark a significant milestone for the Signal Arts Centre as we look forward to celebrating our 30th anniversary. To coincide with this landmark a new committee has been formed to oversee and if possible improve the Society for its members. A series of events will be staged by the Society next year and we would very much like to hear your views. So please join us at our Meet and Greet event on Friday 15th November, we look forward to seeing you there.

SIGNAL ARTS SOCIETY

MEET & GREET

Please join us on Friday 15th of November
From 6.30pm to 8.30pm
Signal Arts Centre
1 Albert Avenue, Bray, Co. Wicklow.

Members and Non Members Welcome



News from Claire



It is hard to believe that it is the last quarter of 2019, this year has absolutely flown by! But here we are and as I write this some of the staff are preparing frantically for Culture Night which takes place this Friday, 20th September. We have toned it down a bit this year as we have an amazing sculpture show in the gallery and the theme for this year is "Environment". There has been great input from many community groups in the town and various groups we work with in the Centre. And, of course, the staff in Signal have been very creative in the work they have produced for the day.

As you may or may not know the management structure has changed so I would like to welcome the new Management Committee (old and new members), the new Management Committee is: Emma Finucane, Chairperson, Oona McFarland, Treasurer, Eleanor Phillips, Secretary, Colum O'Neill and Greg Murray.

Also the Signal Arts Society Committee is: Erika Doyle, Chairperson, Conor Rafferty, Secretary, Ger Keenan, Gill Cassidy, Biddy Scott, Deirdre Ridgway and Margaret Walsh. I am looking forward to working with you all.

The new Signal Arts Society has organised a Meet and Greet night in the Centre on 15th November @ 6.30 please come along, bring a friend if you like, and meet other members and enjoy! I would like to welcome a new member of staff – Carmel O'Dwyer to the Signal Arts Centre community – you can see her biography on this page.

We are now looking forward to the Christmas Fair and hope that the gallery will become an Aladdin's Cave, full of homemade treasures, for all to enjoy! Signal Arts Centre is looking forward to producing another eventful and artful year in 2020.

Hope to see you all at one or all of the events scheduled for next year.

Claire Flood

SIGNAL ANNUAL OPEN WINNER 2019



'Enjoy yourself,
its later than you think'

Signal Annual Open Exhibition Winner 2019

Congratulations to Laurence O'Toole
on winning the best in show 2019
with his piece 'Enjoy yourself, its later than you think'

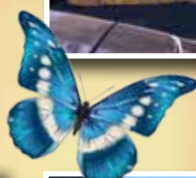
Read his review on page 8

CULTURE NIGHT 2019

ENVIRONMENT

This year we at Signal Arts Centre wanted to focus on the importance of nature conservation and recycling and on how these things affect climate change. In the last couple of years the predictions of the future state of our planet have been quite grim and we wanted to take a little bit more of a positive stance on the subject and celebrate our planet's many species such as bees and how much they help us and how we can help them. Some of the focus was also on negative aspects such as over fishing and the pollution of the oceans. Signal Arts Centre staff worked seamlessly to make this day happen and I want to thank everybody for their brilliant contributions. We were also lucky enough to get to showcase some of the art pieces made by St. Kieran's and Newcourt School pupils and members of the Sunbeam House Services.

We were also delighted to show four pieces that were winners of Bray Tidy Towns Recycled Art Competition – 1st Prize in the Open section went to St Patrick's Loreto called "Funfair". 2nd Prize in the Open section went to Newcourt School called "The Colour of Sound" and in the Special Section Newcourt School won with a piece called "Bottlenose Octopus" 2nd prize in this section also went to Newcourt School and it was titled "Reduce, Reuse, Recycle" congratulations to them all and they made our display on Culture Night very colourful and thought provoking. As well as having many environment inspired art installations at Albert Avenue and Albert walk, we provided some kids' workshops, games and face painting, we had an informative video and leaflets on bees. In the evening time we held an exhibition 'Woodland Walk' opening for artist Conleth Gent.







Gallery Opening Hours
Monday / Friday - 10-1 / 2-5
Saturday / Sunday - 10 - 5

EXHIBITION PROGRAMME OCTOBER - DECEMBER 2019

For more information go to www.signalartscentre.ie



Yvonne Leon

'Silent stories'
Figurative Ceramics

Monday Sept 30
Sunday Oct 13

Opening Reception
Friday Oct 4 - 7pm - 9pm



Meitheal

'Rust & Harvest'

Monday Oct 14
Sunday Oct 27

Opening Reception
Thursday Oct 17 - 7pm - 9pm



Michelle Fullam

'Solar Bodies, Lunar Souls'

Tuesday Oct 29
Sunday Nov 10

Opening Reception
Friday Nov 1 - 7pm - 9pm



Fiona Chan

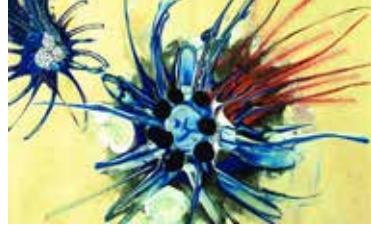
'My Heart is an Ocean'

Monday Nov 11

Sunday Nov 24

Opening Reception

Sunday Nov 17 - 3pm - 5pm



Bray Artists Circle

'The Way we Art'

Monday Nov 25

Sunday Dec 8

Opening Reception

Thursday Nov 28 - 7pm - 9pm



Signal Arts
Christmas Fair

Monday Dec 9

Tuesday Dec 24

Open every day

From 10am to 5pm



Views and Reviews Laurence O'Toole, Signal Annual Open Winner 2019

Well firstly, I was not expecting to win the best in show prize as there were many strong pieces in the show. I have noticed that the level of work submitted to the annual show, each year is getting stronger. This is a very important development, as it highlights the work being done by the Signal Arts Centre of Bray, for the arts in Bray and the people of Bray. The profile of the centre is rising and so it attracts more artists outside of its normal catchment. This is a good development, as it raises the bar for all artists, as JFK said "A rising tide lifts all boats".

I am very happy to have been awarded the prize and happy to see it hang in the Signal Arts Centre, it was a difficult piece to build, a lot of precision needed to keep it as a constant working Triptych, and gold leaf is always tricky in its own right. Onwards to next year when I will be part of a two person show with Jade Butler of the Signal Arts Centre.

This was an idea I had been toying with for years. A triptych with an environmental narrative, using Bray, Co. Wicklow as the back drop. It seemed to make perfect sense as the setting, as it was where I grew up, where I understood and where I had most of my early experience's - both good and bad. The opening scene is of an idyllic Bray seafront, complete with its candy floss kiosks, selling happiness, forgetfulness, and distraction. There is nobody here as I wanted the emphasis and focus on societies insatiable desire for gratification. The triptych opens up to a darker scene of Bray, it's late and the light is gone, the clock is telling of the



Emer O'Boyle (Judge), Laurence O'Toole (Winner), Emma Finucane (Signal Chairperson)

late hour. I first saw this clock in a Museum in Hiroshima, Japan. It was found in the wreckage of the city after a nuclear bomb had been dropped on the city to end the Second World War. It is twisted and broken and odd and unsettling. I carried that image around with me for a long time. On leaving the Museum, dedicated to the aftermath and horrors of the Atom Bomb, there is a large sign on the wall, reproduced in many languages, It read " Please tell everyone of what you have seen here, so this may never happen again"

www.laurenceotoole.com

Views and Reviews Jim Morrison Exhibition (A Celebration)



Teallach. An exhibition celebrating the life and work of Jim Morrison, artist and founder member of Signal Arts Centre, opened on June 10th on the second anniversary of Jim's passing. It was the culmination of a year's preparation that entailed the sourcing and collating of his many works. It also involved making contact with the multitude of people whose paths crossed with Jim's over the 29-year time span from the foundation of Signal in 1987. The opening night was a great success and was attended by Jim's daughter Brigid, his sister Martina and many friends. The opening speech was given by a lifelong friend Johnny Hughes.



Heavy rain had been forecast, but thankfully the weather remained fine for the outdoor evening party. Erring on caution, tents were provided and erected by sculptor Paul Flynn which added to the festive atmosphere. Mark Granier started the evening off with a reading of a poem he composed in memory of Jim to the gathering of family and friends. Then Retrofix took the stage, joined by emerging 17-year-old performer Aisling Stephens McGowan on bass. Later on, Aisling took centre-stage, fronting the band on lead guitar and vocals with a powerful performance. Retrofix had played their first ever gig in the Signal garden in 2015 for Culture Night, and on that occasion, Jim stood outside, hustling members of the public in to listen to the band, so it was a fitting tribute to return and take part in a night Jim would have thoroughly enjoyed!



Exhibiting Artists about their Work

Yvonne Leon

'Silent Stories: 'Figurative Ceramics

Mon Sept 30 to Sun Oct 13

Opening Reception: Fri Oct 4, 7pm to 9pm

Yvonne Leon is a Ceramic Artist, based in Greystones, County Wicklow. Her figurative works draw people into a world of narrative that touches on the human experience. She explores themes based on emotion, intimacy, relationships and captured moments. The figures Yvonne creates are all "in the Moment." They are reflective in their mood and calm in thought, almost in a dream state of contemplation. Yvonne explores different themes of comfort, nurturing, love, grief and how they might affect us. The protection of oneself, others and empathy are subjects that's she turns to time and time again. Each unique figure is crafted in Stoneware and fired several times with multiple glazes. Sometimes porcelain props, decals and gold lustre are used to add symbolism, complexity and a provocative richness to the deceptively simple human forms-they communicate solely with their eye brows, the tilt of their heads or the light placing of a hand. The subtlety in their body language speaks volumes in a silent, gentle way.



Yvonne graduated with a BA in Ceramic Design in NCAD in 1992, is represented by the Open Window Gallery in Rathmines, South Shore Arts in Dalkey and has exhibited in Milan, Madrid, The Ceramic awards at Millcove Gallery (Kenmare) and in Ceramics Ireland at Dublin Castle. Her work was purchased as part of the Art collection of the National Concert Hall and is owned by private collectors both internationally and in Ireland. Yvonne's work can be viewed on her website, Instagram and Facebook.

<http://yvonneleonceramics.com/>

<https://www.instagram.com/yvonneleonceramics/>

<https://www.facebook.com/yvonneleonceramics/>

Meitheal

'Rust & Harvest'

Mon Oct 14 to Sun Oct 27

Opening Reception: Thurs Oct 17, 7pm - 9pm

Signal Arts Centre is always delighted to exhibit our "Meitheal"; a body of work designed, crafted and created by individual staff artists, past and present, centred on a particular theme. This year our theme is "Rust & Harvest". Autumn is a beautiful but often melancholic time of year. It's the season where the abundant growth during Spring and Summer has come to its fruition and the harvest of those growing months is ready to be taken in.



Exhibiting Artists about their Work

Michelle Fullam 'Solar Bodies, Lunar Souls'

Tue Oct 29 to Sun Nov 10
Opening Reception Fri Nov 1, 7pm - 9pm

Michelle Fullam lives and works in Bray, Co. Wicklow. Although working primarily in ceramics Michelle also works with print and other mediums. Her work is mainly figurative, using hand building techniques and mostly earthenware clays. Many of the pieces are RAKU fired. The themes in Michelle's work are an eclectic mix of mythology, history, nature and a bit of magic.



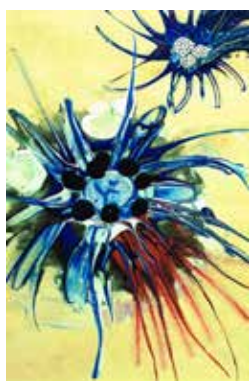
This exhibition is based on the turning points in the seasons that were times of celebration or ritual in ancient Ireland. Solar bodies refers to the concept of the show- a time when the suns progress through the year was of great significance to the people, but also to the physical material. Clay body refers to the actual clay mixture that is used in

forming objects. The flame that's needed to mature this body is like the intensity of the sun, that great source of heat and light that we rely on for our existence. Lunar souls refer to the journey of spirituality and creativity. The myths and stories created to explain people's relationship and dependence on the elemental and monumental forces of nature.



Fiona Chan 'My Heart is an Ocean'

Mon Nov 11 to Sun Nov 24
Opening Reception Sun Nov 17, 3pm to 5pm



A new exhibition by Fiona Chan opens November 11th at the Signal Arts Centre, Bray, County Wicklow. The exhibition features a series of paintings in acrylic, watercolour and gouache. It will be on display until 24th November 2019. More information about the exhibition can be found at www.signalartscentre.ie/fionachan.html.

In the exhibition 'My heart is an ocean' Fiona Chan ties the emotions she went through during a turbulent time in her life to places she has experienced

personal revelations. Her paintings tell of a person seeking safety and hope during a time of illness, family discord and separation "Of going into shadows and of coming out of shadows into light." "The world always seems brighter when you've just made something that wasn't there before." Neil Gaiman. The artist has arranged the work into a cosy, organised atmosphere of Signal Arts Centre, Bray, County Wicklow. They relay to the viewer the feelings of enclosure and burdens in living.



Raised in Mulhuddart, Dublin 15, Chan is a visually impaired artist based in Ballsbridge, South County Dublin. She is a Higher National Diploma graduate of Fibre arts from Ballyfermot College of Further Education in Dublin. In 2013 she had her first Group exhibition titled 'Nature through art' at Castle Espie Gallery, County Down and a group exhibition titled 'Barking dog' held at Avenue Road Gallery, Dublin 8.

Chan is known for her use of powerful imagery with delicate pragmatic use of the brush. When asked about the exhibition, she said that while creating the paintings she felt as though she was coming to terms with all that had befallen her during the past six years in terms of her health and personal life. Each painting was a therapeutic process in many ways to get back to a more stable way of living. Most of the artwork in Fiona Chan's studio reflects aspects of nature under change, the elements, erosion and contain many upcycled materials.

'My heart is an ocean' exhibition will delight guests with pleasing blends of colour, shade and emotive imagery.

Full information can be found on the [website www.signalartscentre.ie/Fionachan.html](http://www.signalartscentre.ie/Fionachan.html)

Exhibiting Artists about their Work

Bray Artists Circle

'The Way we Art'

Mon Nov 25 to Sun Dec 8

Opening Reception Thur Nov 28, 7pm to 9pm

Bray Artists Circle has been providing opportunities for local artists to develop their artistic talent since 2003. The members range from artists who have been painting for many years, to others who have taken it up more recently as a hobby. A cross-section of styles and media preferences from oils to watercolour, acrylics to pastels is displayed within the group. While there is no formal teaching, more experienced artists are willing to give advice as members work on their own subject preferences in a relaxed atmosphere.



Workshops led by professional artists are organised annually. Trips to art galleries such as the National Gallery have also been organised for members. Some members have also travelled to France, Spain and Italy for painting workshops. The group meet throughout the year on Monday evenings for two hours in St. Cronan's B.N.S., Bray. At present there are approximately 25 members many of which have successfully sold their work in a variety of exhibitions.

SIGNAL ARTS

CHRISTMAS FAIR

Monday December 9 to Tuesday 24

Open everyday 10am to 5pm



Something
for
Everyone





Signal Book Club 2019

First Tuesday of every month
at 5 pm in the gallery

Tuesday Oct 1 2019

The Secret lives of Baba Segi's Wives

by Lola Shoneyin

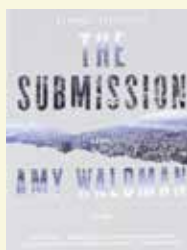


To the dismay of her ambitious mother, Bolanle marries into a polygamous family, where she is the fourth wife of a rich, rotund patriarch, Baba Segi. She is a graduate and therefore a great prize, but even graduates must produce children and her husband's persistent bellyache is a sign that things are not as they should be. Bolanle is too educated for the 'white garment comen' Baba Segi would usually go to for fertility advice, so he takes her to hospital to discover the cause of her barrenness. Weaving the voices of Baba Segi and his four competing wives into a portrait of a clamorous household of twelve, Lola Shoneyin evokes an extraordinary Nigerian family in splashes of vibrant colour.

Tuesday Nov 5 2019

The Submission by Amy Waldman

A jury gathers in Manhattan to select a memorial for the victims of a devastating terrorist attack. Their fraught deliberations complete, the jurors open the envelope containing the anonymous winner's name - and discover he is an American Muslim. Instantly they are cast into roiling debate about the claims of grief, the ambiguities of art, and the meaning of Islam. The memorial's designer is Mohammad Khan, an enigmatic, ambitious architect. His fiercest defender on the jury is its sole widow, the mediagenic Claire Burwell. But when the news of his selection leaks to the press, Claire finds herself under pressure from outraged family members and in collision with hungry journalists, wary activists, opportunistic politicians, fellow jurors, and Khan himself. All will bring the emotional weight of their own histories to bear on the urgent question of how to remember, and understand, a national tragedy.



Tuesday Dec 3 2019

The Wych Elm by Tana French



Toby is a happy-go-lucky charmer who's dodged a scrape at work and is celebrating with friends when the night takes a turn that will change his life - he surprises two burglars who beat him and leave him for dead. Struggling to recover from his injuries, beginning to understand that he might never be the same man again, he takes refuge at his family's ancestral home to care for his dying uncle Hugo. Then a skull is found in the trunk of an elm tree in the garden - and as detectives close in, Toby is forced to face the possibility that his past may not be what he has always believed. A spellbinding standalone from one of the best suspense writers working today, *The Wych Elm* asks what we become, and what we're capable of, when we no longer know who we are.



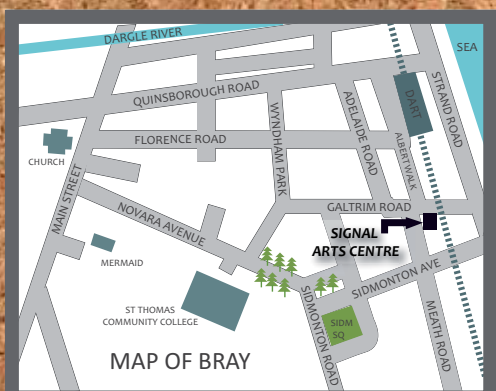
The Bray Arts Show

Mondays 8 pm at the Martello

Monday October 7th 2019



Closing date for submissions for the next Newsletter: 20TH Nov 2019



Signal Arts Centre

1 Albert Avenue,
Bray, Co. Wicklow.

Tel: 01 2762039

Fax: 01 2869982

www.signalartscentre.ie
info@signalartscentre.ie

Gallery Hours

Monday to Friday 10 - 1 and 2 - 5
Saturday and Sunday 10 - 5

Office Hours

Monday to Friday 9 - 1 and 2 - 5



This project is funded
by the Department
of Social Protection