



# SIGNAL ARTS NEWSLETTER

Volume 17

January - March 2020

Issue 1



'Pale Skin'  
by Lynn Kennedy



**SIGNAL  
ARTS  
SOCIETY**

Membership is open to  
artists and non artists.

For membership queries  
contact  
[society@signalartscentre.ie](mailto:society@signalartscentre.ie)

## THE BENEFITS

- Invitation to participate in the annual Signal Arts Society exhibition.
- A printed copy of the quarterly newsletter posted directly to each member.
- **10%** discount on the purchase of artwork in the Signal Arts Centre.
- Reduced commission on the sales of your work in the Signal Arts Centre from 25% to 15%.
- **10%** discount on the price of classes run by the Signal Arts Centre.
- Opportunity to have a piece published in the newsletter relating to your work or area of artistic interest.
- Invitations to exhibition openings and other events staged by the Signal Arts Centre.
- **10%** discount when hiring facilities in the Signal Arts Centre including the kiln and the dark room.
- Opportunity to promote your work through the online members page on the Signal Arts Centre's website.
- **12%** discount on purchases made in Michael Doherty's School Supplies, Bray.
- **10%** discount on purchases made in Craft Framing, Bray.
- **10%** discount on purchases made in Caffé Letterario Nera on the Albert Walk.

## Content

3

News from Claire.  
S.A.S Members News  
Signal Arts Submission Call 2021

4

Signal Arts Centre Christmas Fair

5

Childrens Art Summer Exhibition 2020  
Signal Arts TV - Artist Talks

6/7

Exhibition Programme  
January - March 2020

8

Sculpture in Context by Erika Tyner  
Joaquín Sorolla y Bastida by Biddy Scott

9

Meet & Greet evening by Conor Rafferty  
Doom Thunder by Kaisa Ypya

10/11

Bray Camera Club 'Photography Exhibition 2020'  
Louise Butler 'Deception Island'  
Ian Calder 'Equis Caballus'  
Rachel Bernard 'What's Inside?'  
Lynn Kennedy 'Skin Deep'  
Bray Active Retirement 'The Joy of Painting'

12

Noticeboard

### BOARD OF DIRECTORS

Emma Finucane (Chairperson)  
Oona McFarland (Treasurer)  
Eleanor Phillips (Secretary)  
Michelle Fullam  
Ger Keenan  
Colum O'Neill  
Linda O'Neill  
Douglas Ross

### CEP MANAGEMENT COMMITTEE

Emma Finucane  
Oona McFarland  
Eleanor Phillips  
Colum O'Neill  
Greg Murray (PDO)

### NEWSLETTER TEAM

Claire Flood:  
Chief Editor

John McCann:  
Layout, editing, printing.

Jonathan Higgins - Photography

**Newsletter Committee:**  
Claire Flood, John McCann, Kaisa Ypya,  
Margaret Walsh, Erika Tyner, Anna  
O'Rourke.

**SIGNAL ARTS SOCIETY COMMITTEE:**  
Ger Keenan, Deirdre Ridgway,  
Conor Rafferty, Margaret Walsh,  
Biddy Scott, Erika Tyner, Claire Jeffares.

### CE SUPERVISOR

Claire Flood

### ADMIN STAFF

Conor Rafferty  
Beata Piotrowska  
Alva Smith

### STAFF ARTISTS

Jade Butler  
Anna O'Rourke  
James Hayes  
Claire Jeffares  
Ciarán Coogan  
Donal Smyth  
Olive Merry  
Andrew Freeland  
Lorna Lennon  
Kaisa Ypya  
John McCann  
Jonathan Higgins  
Carmel O'Dwyer

### OFFICE HOURS

Mon to Fri 9.00 - 1.00 and 2.00 - 5.00

### GALLERY HOURS

Monday to Friday 10 - 1 and 2 - 5  
Sat and Sun 10 - 5

Signal Arts Centre, 1 Albert Avenue,  
Bray, Co. Wicklow

Tel: 01 2762039 - Fax: 01 2869982

Email: [info@signalartscentre.ie](mailto:info@signalartscentre.ie)

Web: [www.signalartscentre.ie](http://www.signalartscentre.ie)

Signal Arts Centre is represented on the following: Bray Partnership,  
Wicklow Arts Network, Bray Chamber of Commerce.

Contact Signal Arts Society: [society@signalartscentre.ie](mailto:society@signalartscentre.ie)

Opinions expressed in this magazine will not always be those of  
Signal Arts Centre and of course we reserve the right to edit all  
submissions where necessary.

Printed by Central Press, Bray

Please address all  
Newsletter correspondence  
to Claire Flood  
at Signal Arts Centre

## SAS members news

Dear Members

Wishing you a Merry Christmas!

We had a lovely Meet and Greet evening in November to welcome new and old members to the Society. Many thanks to those who completed our Survey, there was a great response. We will be planning a number of events in 2020 based on your feedback - do keep an eye on our Facebook page for news of events. We launched our new membership application form featuring Deirdre Hannon's beautiful work. These are available in Signal for anyone interested in joining.

We have also organised new membership benefit's, see the page opposite. Spread the word and share this newsletter with others and encourage other artists and non-artists to get involved. A particular thank you to Michael Doherty School Supplies for a generous discount for members of 20% up until the end of January - just produce your Signal membership card. Thanks too to Craft Framing for their new discount. Finally, the S.A.S Members Exhibition will run from March 30th to April 12th next year. The deadline for submissions is Friday February the 28th 2020. The theme this year is 'Sublime'.

Looking forward to seeing you in the New Year.



## News from Claire



- It is with great sadness that I
- have to start my news for the
- last quarter of 2019 and that is
- because of the sudden death of
- Gill Cassidy also known as Gill
- Mac. Gill worked in Signal Arts
- Centre, as a staff artist, from
- 2014 to 2017, and was opted onto the
- Signal Arts Society recently. Gill was a very positive force
- in the Centre and was responsible for a lot of the amazing
- sculptures etc. that we used for both Culture Night and St.
- Patricks Day Parades. She was very popular with the various
- groups that she worked with here in the Signal Arts Centre,
- she also ran her own successful painting classes on Saturday
- mornings in the Centre. Gill's large personality and presence
- will create a huge absence in the Centre.
- All the events that we run in the Centre would not be possible
- without the great enthusiasm and help from all the staff and
- Gill was definitely one of the best. And if I don't say it often
- enough I would like to take this opportunity to say: Thank you
- to all the staff for their tireless work both in the Centre and
- representing us on outreach projects!
- Anyway, looking ahead to the next year, we are now looking
- for submissions of work to be shown in the gallery for the
- 2021 calendar, details in this issue.
- Wishing you all a very happy and healthy New Year.

*Claire Flood*



*Gill Cassidy*

## SIGNAL ARTS CENTRE SUBMISSION CALL 2021

**We are now accepting submissions for exhibitions in 2021.**

**Closing date is 5pm Friday, March 27th 2020**

A submission proposal including title, covering what you would hope to exhibit if you were successful.

A minimum of six images in digital format clearly marked with your name and title of picture. All images should be suitable for print reproduction and accompanied with their dimensions.

Artist C.V. (art related only). Artist statement (For PR purposes).

There is an exhibition fee of €250 to be paid by the artist if selected.

Submit by post or email directly to : Exhibition Co-ordinator, Signal Arts Centre, 1A Albert Avenue, Bray,  
Co. Wicklow. Tel: 01-2762039 email: [exhibitions@signalartscentre.ie](mailto:exhibitions@signalartscentre.ie)



# SIGNAL ARTS CENTRE

## CHRISTMAS FAIR



The Christmas Fair will be held in the Centre from Monday 9th December until Christmas Eve. We have sourced as much local craftwork as we can. The standard is always very high and the variety of goods and prices should suit a lot of people whether buying for teacher, or that special someone in your life! Don't forget when you buy local and handmade an actual person does a happy dance!! Thank you for your support.



# Childrens Art Summer Exhibition

Kaisa Ypya & Andrew Freeland

**T**hursday's Children's art class led by Kaisa Ypya and Andrew Freeland is currently preparing to hold an arts exhibition in the Signal Art Centre's garden this summer. The children are going to be heavily involved in curating the exhibition which will teach them various different practical skills. Their age group is 10-12 and all of them have been taking part in our art classes for several years.

All the children in this group have different ways of expressing themselves and different styles on how they create art which will make the exhibition a real treat for art lovers. The styles vary from model making to abstract and figurative art. Most of their work will be for sale too. The official date will be announced closer to the time as we are hoping to get good weather for the exhibition and we look forward to seeing everyone there!



## Signal TV - Artist Talks

by Ciarán Coogan

**I**n October myself Ciarán Coogan and Jonathan Higgins (Signal Arts Web Design and Photography) embarked on a new project that we hoped would revive the fortunes of the seemingly dormant 'Signal TV'.

The 'Signal TV' media channel had done some interesting things in its time and we thought the time was right to breathe new life into it with a new project.

With that we grabbed our cameras and had a good look around the rich cultural landscape of Bray and beyond.

The result of this being the Signal Arts 'Artist Talks'.

Jonathan and I had a look at the upcoming exhibitions for 2020 and decided it would be a great idea to go and talk to some of these artists. We wanted to know what makes these artists 'tick', what drives them? What inspires them? Each artist has been very generous with their time and I think the honesty of their thought will be clear to the viewer.

It can be a lonely furrow when you are chasing the tail of your inspiration and I hope we have been able to capture some of this journey for you to watch. We hope to continue this project with many more artists in the coming months and hear many more stories of artistic endeavour.

The first series of videos will be available on Signal Arts social media channels in the coming weeks, we hope you enjoy watching them as much as we enjoyed having those conversations.



Lynn Kennedy (Artist)



Ray Corcoran (Artist)



Gallery Opening Hours  
Monday / Friday - 10-1 / 2-5  
Saturday / Sunday - 10 - 5

# EXHIBITION PROGRAMME JANUARY - MARCH 2020

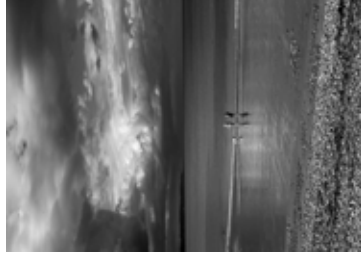
For more information go to [www.signalartscentre.ie](http://www.signalartscentre.ie)



## Bray Camera Club 'Bray Camera Club Photography Exhibition 2020'

Monday Jan 6  
Sunday Jan 19

Opening Reception  
Friday Jan 10 - 7pm - 9pm



## Louise Butler

### 'Deception Island'

Monday Jan 20  
Sunday Feb 2

Opening Reception  
Friday Jan 24 - 7pm - 9pm



## Ian Calder

### 'Equss Caballus'

Monday Feb 3  
Sunday Feb 16

Opening Reception  
Friday Feb 7 - 7pm - 9pm





Rachel Bernard

'What's Inside?'

Monday Feb 17

Sunday Mar 1

Opening Reception

Friday Feb 21 - 7pm - 9pm



Lynn Kennedy

'Skin Deep'

Monday Mar 2

Sunday Mar 15

Opening Reception

Friday Mar 6 - 7pm - 9pm



Bray Active Retirement

'The Joy of Painting'

Monday Mar 16

Sunday Mar 29

Opening Reception

Sunday Mar 22 - 3pm - 5pm



## Views and Reviews

### Sculpture in Context by Erika Tyner

Every autumn 'Sculpture in Context' takes place in Dublin's lovely Victorian Botanic Gardens. This exhibition bridges the gap between art and nature, organic forms, and man-made objects. Walking through the gardens you come across an impressive collection of contemporary works by over 125 Irish and international artists. Using bronze, ceramic, glass, stone, steel and wood, the artists depict the simple to the fantastical.

What a great way to spend an afternoon, discovering beautiful figurative, modern and abstract pieces among the plants and standing in the shade of the trees. Works are also shown in the Great Palm House, the Teak House and Curvilinear Range, with smaller works exhibited in the Gallery in the Visitor Centre. Our own S.A.S members have exhibited here. Put it in the diary for next year!

For more information and award winners see <http://www.sculptureincontext.com/>



Son of Sitka - Fiona Smith



Still Leaf - Grant MacEwan



Congent Teak House - Erika Tyner

## Views and Reviews

### Joaquín Sorolla y Bastida by Biddy Scott



Did anybody miss this? (Exhibition at the National Gallery of Ireland. September-November 2019)

If you did, you really must go to the Museo Sorolla in Madrid to see what everybody was enthusing about. This artist, Joaquín Sorolla y Bastida (1863-1923) was a surprise to almost

everybody having been a bit lost and found again with recent renewed interest in Spanish art, particularly in this fin de siècle, inter-era.

In sad comparison to our miserable cold winter dark days, his plein-air, seaside paintings are blissfully warm and light and lively. They are filled with movement and you can feel how quickly and intensely he painted them on his favourite Valencian beach... In some there is breeze blown sand in the



of light across a girl's pink dress, picking out the red peppers in centre of the visual field. The balance of colour, light and dark is wonderful. Many of his paintings portray affluence and the comforts but he was not averse to the representation of grimmer realities and the hardship of everyday life and labour. There is respect as well as sympathy in his paintings of impoverished and marginalized people at work and in trouble.

paint! This artist knew about light and about 'white'; his white has so much more colour involved. And he understood how it behaves. The painting that I liked best in this exhibition was 'Los Pimientos' (1903), in which a dark interior is made vivid with a single shaft

In the last room of this exhibition there was a set of more 'worthy' portraits and paintings, relating to Spanish cultural life which were parts of a commissioned project for the Hispanic society of America. It would be great to see these in their completed setting; out of place they didn't seem to compare well with the other, more vibrant works displayed... but if I ever get to New York.... Above all and everything that is so appealing in the work of this artist, it is difficult not to be astonished at his ability to do everything well. This work is composed, well drawn and beautifully painted with a mastery of colour and often a real sense of drama and the human condition. If you missed this exhibition, poor you!!!





## Views and Reviews

Meet & Greet evening by Conor Rafferty

A large crowd gathered in the Signal Arts Centre on Friday, November 15th as the Signal Arts Society staged a Meet and Greet evening for both members and non-members. Those in attendance heard from the new committee about the numerous events the Society will stage next year and the extra benefits that members can now avail of. This was followed by an address from company secretary Eleanor Phillips who outlined details of a collaboration with the Mermaid Arts Centre to celebrate Signal's upcoming 30th anniversary in June 2020.

Those in attendance very kindly offered feedback on the membership programme by completing a survey and contributing to a suggestion box before taking a tour of the centre. The evening also saw a significant number of new members join the Society and we would like to take this opportunity to welcome them.

A special thank you must go to artist Deirdre Hannon for allowing the Society to use her wonderful painting entitled Boats on the front of the new application form and to Michael Doherty's School Supplies for all their generous support. 2020 looks set to be a busy year for the Signal Arts Society as there are a large number of events planned so please keep an eye on our website and social media pages for details and we hope to see you there.



## Views and Reviews

Doom Thunder by Kaisa Ypya



Signal Arts Centre's beloved house band, Doom Thunder, which consists of the members of our Wednesday morning Sunbeam group, will be performing Christmas songs for our staff during their very last class of this year, on the 18th of December. The staff are really looking forward to this joyful spectacle that will surely raise the festive feeling in the building! Doom Thunder are already known by the public from their previous two concerts in our centre in Spring 2019 and Spring 2018. These concerts were pop and country music influenced and for this year's Doom Thunder Christmas Concert the members of the band have selected some groovy pop style Christmas songs. The group is also considering adding some instruments to the performance. The rehearsals for the concert are well on their way, and I and my fellow art facilitator, Claire Jeffares are anticipating this concert to be another huge success!





# Exhibiting Artists about their Work

## Bray Camera Club 'Photography Exhibition 2020'

Mon Jan 6<sup>th</sup> to Sun Jan 19<sup>th</sup>  
Opening Reception: Fri Jan 10<sup>th</sup>, 7pm to 9pm

Since its foundation in 1971, Bray Camera Club has provided a forum for its members (an eclectic mix of amateurs, professionals and competition prize-winners) to learn from and support one another in improving their photographic skills and developing their creativity. The Club members use a variety of photography equipment to collect images - from mobile phones, to compact cameras and digital SLRs, to film and large format cameras.

The Club's photography range incorporates all photographic disciplines: abstract, street, wildlife, landscape, studio, close-up and portrait photography are all explored. Whenever the Club presents its work to the public, all members are encouraged to display the best of their photography and with a wide variety of photographic disciplines being showcased, this exhibition is sure to appeal to anyone with an interest in photography or even just a curious eye.



## Louise Butler

'Deception Island'

Mon Jan 20<sup>th</sup> to Sun Feb 2<sup>nd</sup>  
Opening Reception: Fri Jan 24<sup>th</sup>, 7pm to 9pm



Louise Butler is a visual artist, specialising in landscape. Her methods of investigation take form in multidisciplinary areas, as her practice flows between painting, sculpture and performance. Butler is drawn to and intrigued by the natural environment, dramatic scenery of majestic landscape, mountains, islands and the surrounding elements, both at home and abroad. During her travels her search for what she considers 'ideal locations for the adventure tourist' these are the places with monumental views of natural beauty in all its harshness and wonderment.

As such, she is a tourist who strives for a unique landscape. For many of us, the relationship we have with nature is ambivalent. It is present in our everyday life, even in vast quantities in some countries, and it seems our access to nature is boundless. Her work is about the view of nature from within society. Butler anticipates points of conflict in the landscape related to commercialisation. Nature as commodity is transformed into a spectacle to admire from very close. The idyllic land has now been framed for us. Landscape is the object to be consumed.

## Ian Calder

'Equus Caballus'

Mon Feb 3<sup>rd</sup> to Sun Feb 16<sup>th</sup>  
Opening Reception: Fri Feb 7<sup>th</sup>, 7pm to 9pm

Horses and humans share a long history, in farming, in transport, in war and in sport. Horses were raced on the plains of Kildare hundreds of years before Saint Patrick banished the snakes from Ireland. The horse is a noble and magnificent beast, both spirited, fiery, gentle and generous. These paintings pay homage to the great horse painters of the past, Stubbs, Delacroix, Degas, Munnings, and Blackshaw.



The paintings are loose, expressive and unsentimental of the spirit of the horse, painted with a lot of surface interest in the brushwork, but are, nevertheless, anatomically correct. This derives from my intimate knowledge of the animal and my practice in life studies of the human figure. Made by working over thin washes with vigorous brush work and impasto pigment. Rubbing and scraping back to leave ghost images on the canvas, expressing the struggle to resolve the final image. I endeavour to make interesting marks on the canvas that finally resolve in an image of Equus Caballus.



# Exhibiting Artists about their Work

Rachel Bernard

'What's Inside?'

Mon Feb 17<sup>th</sup> to Sun Mar 1<sup>st</sup>  
Opening Reception: Fri Feb 21<sup>st</sup>, 7pm to 9pm



Rachel Bernard is an artist who originates from Brittany in France and has been living in Ireland since 2005. Her preferred medium is oil. Originally working with heavy texture and a palette knife to brush and fine ink, she has developed a range of styles which include surreal and abstract paintings. Her desire is to keep moving forward in developing new ways to express her feelings and influences. Following huge learning experiences, working

in Signal arts to running her own gallery and studio, she then worked from a smaller establishment where she could produce works whilst conducting art classes.



She now produces paintings from home. This gives her the freedom to work without the escalating costs of renting in the Bray area. Her most recent works follows the theme of human emotions, and she loves the challenges of transferring these to works of art. The range of paintings vary from large to small to suit both taste and budgets.

Her latest works can be viewed on [www.taylorbernardart.myportfolio.com](http://www.taylorbernardart.myportfolio.com)

Lynn Kennedy

'Skin Deep'

Mon Mar 2<sup>nd</sup> to Sun Mar 15<sup>th</sup>  
Opening Reception: Fri Mar 6<sup>th</sup>, 7pm to 9pm

Lynn Kennedy is a figurative artist based in Dublin. She graduated from the Institute of Art, Design + Technology in 1993, and since then has worked in several creative arts, including design, illustration and photography. Lynn now works primarily in oils, and much of her work is commissioned for private collections. This year, her painting 'I am Claudia' is part of the Zurich Portrait Prize exhibition in the National Gallery, her self-portrait was exhibited in London in the biennial Ruth Borchard Self-Portrait Prize, and she has two paintings exhibited in the Belfast Museum as part of the RUA Annual exhibition.



Her solo show consists of a body of work based on our skin. It shows a series of paintings exploring how our skin can affect how people see us. Whether it is young or old, dark or light, damaged or inked it is merely an outer covering for who we are. This collection of paintings will show how incredible our skin is and how although it is sometimes used by others to hurt us we can also use it as a canvas to show the world a little more about ourselves.

Bray Active Retirement

'The Joy of Painting'

Mon Mar 16<sup>th</sup> to Sun Mar 29<sup>th</sup>  
Opening Reception: Sun Mar 22<sup>nd</sup>, 3pm to 5pm



We meet as a group every week for our painting class. A place to share, stay connected and inspire one another with art. Henri Matisse viewed his masterpiece 'Le Bonheur de Vivre' of 1905 as 'Creating an art of balance, of purity and serenity, devoid of troubling or depressing subject matter. An art that could be for every mental worker, for the businessman as well as the man of letters, for example, a soothing, calming influence on the mind, or something like a good armchair that provides relaxation from fatigue'. When this painting became a recognised 'work of art' the upcoming Picasso was disconcerted, which prompted him to out-do Matisse with his 1907 canvas 'Les Femmes d'Alger'. However Matisse appears the guardian in our darkest times of something that human beings need to be able to imagine and believe in. Happiness is a human right and Matisse speaks up for it beautifully.

Bray Active Retirement might not all want the angst of being a Matisse or Picasso but come together every week to create art, share enthusiasm, fun, and the possibility of taking home a masterpiece. They bring their work to share with you from Monday 16th March until Sunday 29th March 2020. The joy of painting is at heart the joy of sharing and the works exhibited here reflect not just hours, but years of work by the participants. There is always a process of revealing oneself in the art we make and that is possibly the hardest journey we undertake. Sharing our art with others is the joy. Your feedback and patronage is important, please feel free to let us know what you think.



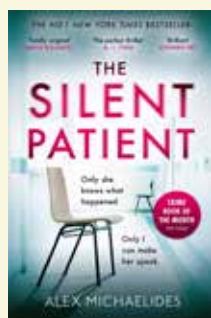




## Signal Book Club 2020

First Tuesday of every month  
at 5 pm in the gallery

**Tuesday Jan 7th 2020** *The Silent Patient*  
by Alex Michaelides



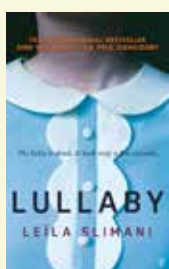
A mix of Hitchcockian suspense, Agatha Christie plotting, and Greek tragedy." *The Silent Patient* is a shocking psychological thriller of a woman's act of violence against her husband and of the therapist obsessed with uncovering her motive. Alicia Berenson's life is seemingly perfect.

**Tuesday Feb 4th 2020** *Grace in Winter*  
by Deirdre Purcell

Grace has spent years devoted to the needs of others. Although her children are now grown, she remains the main carer for her highly destructive youngest daughter Leonie. When ex-husband Harry, for his own manipulative reasons, gifts the mother and daughter with a winter cruise, Grace accepts despite her reservations, hoping that a change of scene will do them both good. Ben, a novelist whose career is in freefall, is also on the cruise. Captivated instantly by Leonie's beauty, he wastes no time in getting to know her - and Grace along with it. As the older woman grapples with unexpected feelings the encounter awakens within her, it is discovered that Leonie has gone missing. And the scene is set for a drama that will change the course of lives.



**Tuesday Mar 3rd 2020** *Lullaby*  
by Leila Slimani



"When Myriam, a French-Moroccan lawyer, decides to return to work after having children, she and her husband look for the perfect caretaker for their two young children. They never dreamed they would find Louise: a quiet, polite and devoted woman who sings to their children, cleans the family's chic apartment in Paris's upscale 10th arrondissement, stays late without complaint and is able to host enviable birthday parties. The couple and nanny become more dependent on each other. But as jealousy, resentment and suspicions increase, Myriam and Paul's idyllic tableau is shattered."



# ? QUIZ NIGHT ?

**Prizes for 1st 2nd 3rd**

**Raffle on the night**

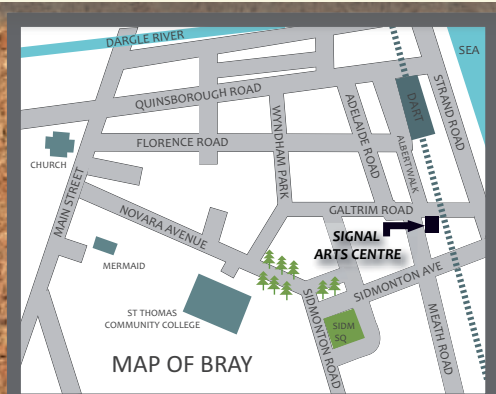
**FUNDRAISER FOR THE SIGNAL ARTS CENTRE**  
**THE FISHERMANS CLUB, SEAFRONT, BRAY**  
**TABLE OF 4 - €40**  
**FRIDAY NIGHT, FEBRUARY 7TH 2020**  
**7.30PM - QUIZ STARTS AT 8PM**  
**PAY ON THE NIGHT**

## The Bray Arts Show

Mondays 8 pm at the Martello  
Monday January 6th 2020



**Closing date for submissions for the next Newsletter: 20<sup>TH</sup> Feb 2020**



## Signal Arts Centre

1 Albert Avenue,  
Bray, Co. Wicklow.

Tel: 01 2762039  
Fax: 01 2869982

[www.signalartscentre.ie](http://www.signalartscentre.ie)  
[info@signalartscentre.ie](mailto:info@signalartscentre.ie)

## Gallery Hours

Monday to Friday 10 - 1 and 2 - 5  
Saturday and Sunday 10 - 5

## Office Hours

Monday to Friday 9 - 1 and 2 - 5



This project is funded  
by the Department  
of Social Protection