



SIGNAL ARTS NEWSLETTER

Volume 17

October - December 2020

Issue 4



'Portrait of an Artist'

Lynn Kennedy: Signal Open Winner 2020



Membership is open to artists and non artists.

For membership queries contact
society@signalartscentre.ie

THE BENEFITS

- Invitation to participate in the annual Signal Arts Society exhibition.
- A printed copy of the quarterly newsletter posted directly to each member.
- 10% discount on the purchase of artwork in the Signal Arts Centre.
- Reduced commission on sales of your work in the Signal Arts Centre from 25% to 15%.
- 10% discount on the price of classes run by the Signal Arts Centre.
- Opportunity to have a piece published in the newsletter relating to your work or area of artistic interest.
- Invitations to exhibition openings and other events staged by the Signal Arts Centre.
- 10% discount when hiring facilities in the Signal Arts Centre including the kiln and the darkroom.
- Opportunity to promote your work through the online members page on the Signal Arts Centre's website.
- 12% discount on purchases made in Michael Doherty's School Supplies, Bray.
- 10% discount on purchases made in Craft Framing, Bray.

Content

3

News from Claire, Condolences, New Staff, Submission Call, S.A.S. Member's news.

4

Ceramic Studio News by Dan Laffan,

5

R.F. Foster on Seamus Heaney and poetry reading by Paul Fitzgerald

6/7

Exhibition programme
October - December 2020

8

2 Artists, 2 Answers: Jade Butler and Laurence O'Toole.
Lynn Kennedy, Signal open winner 2020

9

Recipe
Studio Life by Lorraine Whelan

10

Exhibiting Artists about their work:
S.A.S. 20TH Annual Exhibition'
Elena Kotoenko 'Fragments'
Papillon 'Divergence'

11

Exhibiting Artists about their work:
Nicholas B. Robinson 'Akademiska Stilleben'
The Christmas Fair (Meitheal Art & Craft Show)

12

Noticeboard

BOARD OF DIRECTORS

Emma Finucane (Chairperson)
Oona McFarland (Treasurer)
Eleanor Phillips (Secretary)
Michelle Fullam
Yanny Petters
Colum O'Neill
Linda O'Neill
Douglas Ross

CEP MANAGEMENT COMMITTEE

Emma Finucane
Oona McFarland
Eleanor Phillips
Colum O'Neill
Greg Murray (PDO)

NEWSLETTER TEAM

Chief Editor:
Claire Flood

Layout, Editing, Printing
John McCann

Photography - Jonathan Higgins

Newsletter Committee:
Claire Flood, John McCann,
Margaret Walsh, Erika Tyner

Signal Arts Society Committee:
Deirdre Ridgway, Conor Rafferty, Margaret Walsh, Erika Tyner, Claire Jeffares, Biddy Scott

CE SUPERVISOR

Claire Flood

ADMIN STAFF

Conor Rafferty
Alva Smith
Geraldine Smith

STAFF ARTISTS

Dan Laffan
Keith Clucas
Claire Jeffares
Donal Smyth
David Crowe
Andrew Freeland
Lorna Lennon
John McCann
Jonathan Higgins
Carmel O'Dwyer
Deirdre Ridgway

OFFICE HOURS

Mon to Fri 9.00 - 1.00 and 2.00 - 5.00

GALLERY HOURS

Monday to Friday 10 - 1 and 2 - 5
Sat and Sun 10 - 5

Signal Arts Centre, 1a Albert Avenue,
Bray, Co. Wicklow

Tel: 01 2762039

Email: info@signalartscentre.ie

Web: www.signalartscentre.ie

Signal Arts Centre is represented on the following: Bray Partnership, Wicklow Arts Network, Bray Chamber of Commerce.

Contact Signal Arts Society: society@signalartscentre.ie

Opinions expressed in this magazine will not always be those of Signal Arts Centre and of course we reserve the right to edit all submissions where necessary.

Printed by Central Press, Bray

Please address all
Newsletter correspondence
to Claire Flood
at Signal Arts Centre

New Staff

Keith Clucas



Keith has always been interested in Art and Design and he studied design at the B.A.E.C. It was there that he discovered ceramics. Wood had always been Keith's favourite material to work with but when he discovered clay it soon took over his love of wood. "Clay became my chosen material because of its versatility. It enables me to explore form and proportion quickly and easily." It was with great encouragement from his teachers at the B.A.E.C. that he applied and successfully got a place on the prestigious D.C.C.O.I. ceramics skill and design course in Thomastown.

Geraldine Smith



After a long career in the printing sector, Geraldine worked as an administrator for the Carers Association. She spent two years on an extensive computing course in B.A.E.C. Geraldine has also studied Payroll and Bookkeeping in DDLETB. Her interests include travelling, ceramics, reading and crosswords.

David Crowe



David has come from a background in Digital Design and has obtained a degree in the field. He studied in Stillorgan College for 2 years and one year online. He has also studied multimedia ranging from photography to video work and a few things in between. David is looking to further his knowledge of Web Design and Design in general. He is interested in art, music and creativity.

News from Claire

Hi All

- What a year this has been and
- we are not quite out of the woods
- yet but here in Signal Arts Centre
- we are attempting to get back to
- some sort of way to make it work.
- Obviously we have not started
- any of the special needs classes or
- childrens workshops. But we have kept the doors open
- and have put on a few exhibitions without opening receptions
- and allowing a restricted amount in to view the exhibitions.
- With regard to Government Guidelines it will be impossible
- to curate our usual Christmas Fair so we are putting on a
- Meitheal Art & Craft Show instead, which means there will be
- less suppliers and that makes it easier to abide by the social
- distancing rules. So we will have a smaller version but it will be
- still the place to come for all your Christmas presents.
- As you will see we are still recruiting new participants to join the
- Signal Arts Centre CE scheme so we will be all set to get back to
- full workshops in the new year.
- As usual we are always very happy to hear from you with
- suggestions of what you would like Signal to do for you.

Claire Flood

It is with great sadness that all Signal Arts Centre staff send condolences to Oona McFarland at the passing of her beautiful, daughter Ailbhe. Oona has been involved with Signal Arts Centre for a very long time and she is a member of the Board of Management. Our sympathy goes to Ailbhe's heartbroken family, parents Michael Smith & Oona McFarland, siblings Oisín, Brigid, Rowan & Ruairí, grandparents Annie & John McFarland.

SAS members news



As we enter into the Winter of what has been an extremely challenging year, the Signal Arts Society is now looking ahead with excitement to our upcoming member's show due to take place between October 12th and 25th. The standard of submissions we have received this year was extremely high and the exhibition promises to be an event not to be missed.

Sadly, but quite understandably we have had to postpone our 30th Anniversary Gala that was due to take place this November however we are currently looking to reschedule this event at a later date. In addition, there are a number of events being planned for 2021, all socially distanced of course so please keep an eye on the member's Facebook forum and our website for further details.

Finally, many thanks to David Swail for use of his fantastic still life which currently features on the Society's new application form. Membership can now be purchased through our updated website by simply clicking on the membership tab. As always if you wish to submit an article for inclusion in the next newsletter, simply email newsletter@signalartscentre.ie by November 27th.



**SIGNAL
ARTS
CENTRE**

SUBMISSION CALL

Signal Arts Centre is now accepting submissions for
Exhibitions in
July, September & November 2021

Closing date is 5pm Friday, October 30th 2020

All submissions should include:

- ✓ A proposal including a title, covering what you hope to exhibit if you are successful.
- ✓ A minimum of six images in digital format clearly marked with your name and title of picture. All images should be suitable for print reproduction and accompanied with their dimensions.
- ✓ C.V. (art related only) Artist statement (For PR purposes)
There is an exhibition fee of €250 to be paid by the artist if selected.

Submit by post or email directly to: Exhibitions Co-ordinator,
Signal Arts Centre, 3A Albert Avenue, Glas, Co. Wicklow
Tel: 01-2762039 Email: exhibitions@signalartscentre.ie

Over recent times the Signal Ceramics classes have undergone some changes in order to keep within the new government health guidelines. This requires us to have a class size limited to no more than two students and a teacher within the studio. The new reduced class size has in its own way also brought some merit in the degree of value for the attendees, meaning that the facilitator can give extra time to each student individually in helping them to realise their personal projects or pick up new skills.



Dan Laffan at the wheel



Student Work



Keith Clucas

We have been very fortunate with the recent addition of Keith Clucas to the team, Keith is a trained potter specialising on the potter's wheel. Happily, for students and myself alike he brings with him a wealth of knowledge, considerable skill and above all a real passion and willingness for passing on the tricks of his craft. Our humble kiln has also been working around the clock over the past few weeks, we have had four firings of students work with some beautiful results. So, do make sure to try and catch the upcoming S.A.S. member's show where some of the student's recent work will be on show.



Keith Clucas



Keith Clucas

R.F. Foster on Seamus Heaney

by Paul Fitzgerald

Roy Foster is Emeritus Professor of Irish History at Oxford and his two-volume biography of W.B. Yeats was reviewed as "stunning, magisterial, and definitive." Foster has written an excellent and enjoyable book on the poetry of Seamus Heaney.

Foster writes as historian and reader entranced from the beginning stating "the hairs stood up on the back of my neck" reading North, Heaney's fourth and most critically acclaimed volume of poetry at the time.

Critically Foster has had access to all of Heaney's notebooks and papers written in the creation of each volume of poems. This makes all the difference. Heaney's breakthrough came early in that his first book, *Death of a Naturalist*, was published in May 1966 by Faber and Faber, the most significant publisher of poetry in Britain. The last lines of "Mid-Term Break" a poem on the death of his four-year-old brother hit by a car are particularly poignant. Heaney enters the room where the child is laid out:

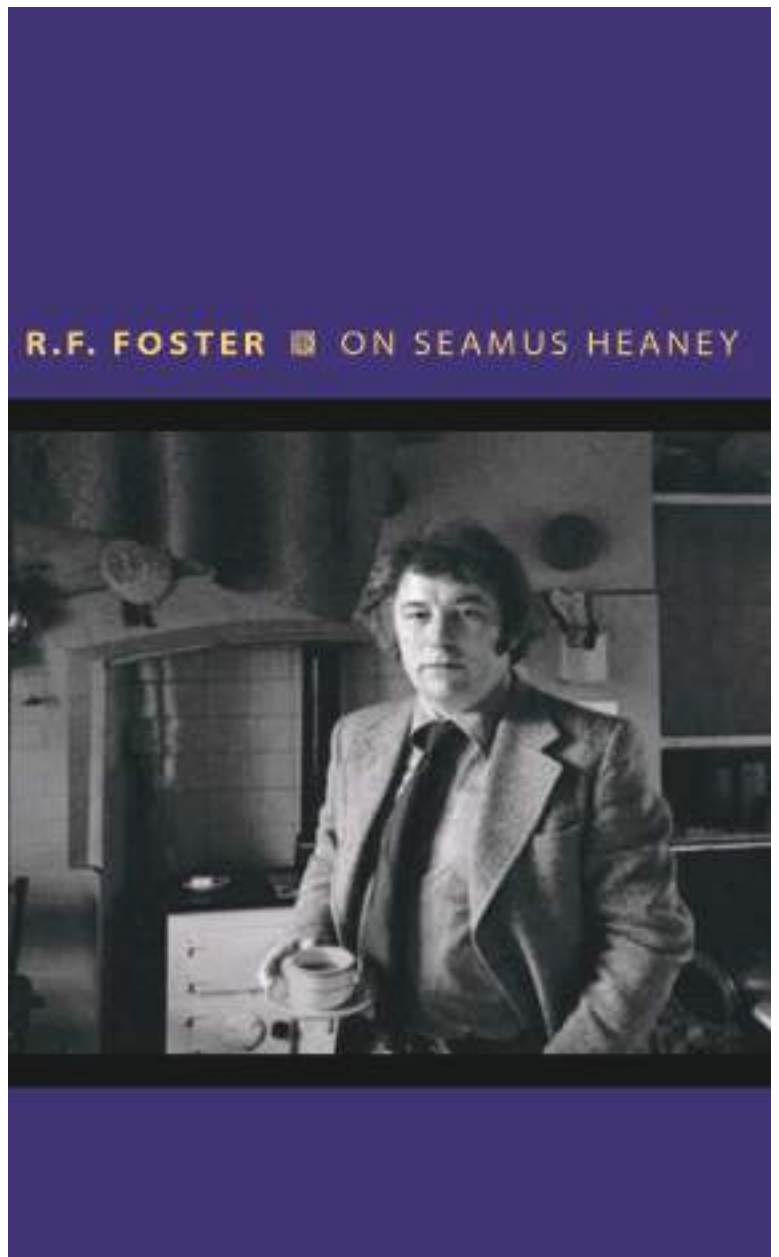
*I saw him
For the first time in six weeks. Paler now,
Wearing a poppy bruise on his left temple,
He lay in the four-foot box as in his cot.
No gaudy scars, the bumper knocked him clear.
A four-foot box, a foot for every year*

Heaney's poetry would continue to mix the personal and the public; his exemplary poetry drew greater audiences' home and internationally culminating in the Nobel Prize in 1995. Heaney's comment on the enormous positive reaction in Ireland and elsewhere was like "A mostly benign avalanche".

His writing continued as did the lectures, tours and new volumes of poetry. Foster writes beautifully on what became his final years.

Tragically in late August 2013 Heaney died from a ruptured blood vessel on the way to the operating table. The extraordinary outpouring of national grief was highlighted two days later as 80,000 football supporters in Croke Park, applauded the dead poet for two long minutes in a homage to the greatest poet since W.B. Yeats.

This is a lovely book on a great poet; read, enjoy and weep.



Poetry in the park

by Paul Fitzgerald

On the first Sunday of every month at midday in the People's Park, Bray, a poetry reading takes place at the bandstand. People arrive with cushions, coats and umbrellas as necessary (weather is not allowed to interfere with the reading!). Some come just to listen, others come to read their favourite poems and some read their own poems. It's a lovely occasion and all are welcome.





Gallery Opening Hours
Monday / Friday - 10 - 1 / 2-5
Saturday / Sunday - 10 - 5

EXHIBITION PROGRAMME OCTOBER - DECEMBER 2020

For more information go to www.signalartcentre.ie



S.A.S.

'20th Annual Exhibition'

Monday October 12th
Sunday October 25th



Elena Kotovenko

'Fragments'

Tuesday October 27th
Sunday November 8th



Papillon

'Divergence'

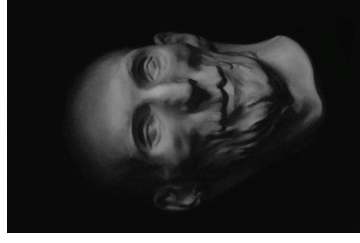
Monday November 9th
Sunday November 22nd



Nicholas B. Robinson

'Akademiska Stilleben'

Monday November 23rd
Sunday December 6th



Christmas Fair
(Meitheal Art & Craft Show)

Monday December 7th
Thursday December 24th

*Something
For
Everyone*



Views and Reviews

2 Artists, 2 Answers: Jade Butler - Laurence O'Toole

Laurence O'Toole and Jade Butler have worked together for many years, from their own studios and sometimes in the same studio and in doing so, are very aware of each other's practice. It was this connection that prompted the artists to put forth this savvy and unusual show.

Laurence has painted Jade, along with the many elements that he has observed her working with in her own practice; her endless observations of the connection of nature to the man-made, of the never ending cycle of plant and flower, of the feminine softening out the masculine within this very topsy turvy world.

Jade, in turn, has responded by isolating and highlighting the elements that Laurence has used to draw the viewer deeper into his narrative. He is telling a story with Jade standing in as lead actor, taking the viewer deeper into these two artists' minds.



<http://www.jadebutlerartist.com>

<http://www.laurenceotoole.com>

Views and Reviews

Lynn Kennedy, Signal Open Winner 2020

At the beginning of this year my resolve to be a successful artist strengthened. For the past few years I had been gradually finding my voice and my place in the world of visual art. In January of 2020 I had a solo exhibition in Signal approaching in March and I'd had successes in a number of group exhibitions in 2019. All that I had been working towards was bearing fruit. I wanted to reflect my journey in a self portrait which is when I created the painting I entered in the Signal Open exhibition 'Portrait of an Artist'. It was created in a way to show that art for me is not a hobby but a career and also a way to communicate some kind of narrative. I wanted to convey my determination to be the best artist I can be and to depict my brushes as my tools to make that a reality. My head and hands are the important parts of being able to convey some kind of message or narrative through art, which is why those parts of my picture are developed while the rest of me is an outline and the background of the canvas is left blank.

When I showed the painting on social media it was to a mixed reaction. People wanted me to finish it and others told me 'I looked prettier in real life' but part of your work being YOUR work is that you decide when something is finished. That's your only way of having a unique voice in the art world so I stuck to my guns and left it as it was.

I was thrilled when it was accepted as part of the Signal exhibition and delighted to learn it was shortlisted to the top 12. Finding out that I had won was fantastic! It meant that someone else had been able to get what I had been trying to say and that I had made the right decisions not to be swayed by people telling me to change the painting. Meeting the judge, Joanna Kidney on the prize giving night and being able to talk to her about the painting and others in the exhibition that she liked was great. After so many weeks in lockdown and being deprived of seeing physical art it was such a relief that the Signal exhibition had been able to go ahead. To win such a large amount as a prize was so gratifying and to have sold the painting at the exhibition was an extra bonus. Typically, as an artist, the money will go right back into art supplies but I also indulged myself by buying another painting from the exhibition. Prize money well spent.

I would like to extend a huge thank you to the Signal Arts Centre for being such a tremendous support to me and other local artists by providing a platform for their art. It can't be easy running an enterprise like this during the pandemic but they are determined to keep supporting visual artists in any way they can.





This is a recipe that I first discovered when I was developing some enamel work for the walls of the old Grainger market building in Newcastle upon Tyne some 18 months ago and I would like to take this opportunity to share it with other Signal newsletter readers as I believe it represents a highly cost effective and delicious meal and I'm sure my fellow readers will agree.

Step 1. Attend your local convenience store to purchase your very own tub of pot noodle, any variety will do (there are 11 different alternatives in total) but for the purposes of this recipe I'm going to plump for the chicken chow mein option, everybody will have their own favourite I'm sure.

Step 2. Once at home fill the kettle and bring it to a steady boil.

Step 3. While the kettle is in the process of boiling carefully peel back the aluminium foil from the top of your pot noodle, chicken chow mein (or indeed whatever option you have selected).

Step 4. Remove the sachet inside the tub and empty it over the noodles which for future reference will be inside the tub.

Step 5. Pour the boiling water over the noodles and ensure that the water comes up to the fill line (this is clearly marked on the inside of the tub. If you are visually impaired however this may prove difficult and you may want to opt for a different dinner altogether such as a sandwich or a take away). When you have poured the water inside give the noodles a gentle stir and fold the aluminium foil back for 3 minutes.

Step 6. After 3 minutes stir once again and fold back the foil.

Step 7. After a further 2 minutes your dish will be ready.

Step 8. Enjoy. Bon appetite

Views and Reviews

Studio Life by Lorraine Whelan

At the end of September I embarked on my third residency at Signal Arts Centre's studio. The first, in 2018, was hugely necessary to my practice. At the time, my husband (also an artist) was getting a studio built in our backyard and much of his supplies and work were taking up space in my studio in the attic of our home. Having ten weeks at Signal gave me a chance to continue, unhindered, with my own work.

Because that first residency was so beneficial to my work, I jumped at the chance to take up a second residency at the same time (autumn-winter) the following year. While I had my home studio back in order, the residency allowed me to start a project without distraction, and at the same time take pleasant breaks interacting with the friendly staff of the centre. When I was asked if I wanted to take up a third residency, again I said yes. Though I did not know a year ago what I wanted to work on in September, by mid-summer I was quite sure and already looking forward to the time of focus.

Each year I have a specific project in mind: the first year I concentrated on creating a new body of paintings, the second year I focussed on bookbinding and printmaking creating a portfolio of linoprints, and this year I am making silk-fibre paper to use with printing. Though my focus for each residency differs, I diligently begin my day with a self-portrait warm-up.

The studio at Signal is a good size with decent lighting (both natural and fluorescent). Working here is a welcome and creative respite to the isolated way in which I normally work in my home studio.



Studio space - 2019



Painting station - 2018



Paper making station 2020

Exhibiting Artists about their Work

S.A.S.

'20th Annual Exhibition'

Mon, October 12th to Sun, October 25th

Signal Arts Centre is pleased to present the 20th Annual Exhibition of works by members of the Signal Arts Society.

This exhibition is a showcase for members of the Signal Arts Society and being a group show, includes a diverse range of content, a varied selection of media and always something to delight even the most discerning of palettes. The Signal Arts Society was launched in 2001 and is affiliated with Signal Arts Centre. The Society consists of artists working in many different arts practices, however membership is not exclusive to artists - anybody with an interest in the arts can join. The Society offers a range of facilities and discounts to members. For more information on the Signal Arts Society go to www.signalartscentre.ie and click on the Society's tab. Alternatively the Society may be contacted through Signal Arts Centre.



Elena Kotovenko

'Fragments'

Tue, October 27th to Sun, November 8th



This exhibition provides an insight into the work of an artist who has various styles and some very strong ideologies, that echo in her work. A fascination with colour and impressionism results in pointillist-like night city scenes

and landscapes. The love of nature makes her explore the use of raw materials and incorporate them into her landscapes. As a keen gardener and lover of flowers she experiments with clay to reproduce life-like 3-dimensional flower canvasses, in deep edged box frames.



Papillon Art Group

'Divergence'

Mon, November 9th to Sun, November 22nd



Papillon Art Group is an eclectic group of artists from a wide range of artistic backgrounds and practices. They meet in the Signal Arts Centre on Saturday mornings and work on their own projects and subjects of interest. The group was originally founded by artist and tutor Gill Mac, who sadly passed-away in 2019. Being a socially close-knit team, the artists decided to continue painting together at Signal and to invite other artists to give occasional workshops in different disciplines. 'Divergence' represents the group's transformation from having a much-missed friend and tutor to individual learning and exploration within the framework of a supportive and motive team. The exhibition is colourful and vibrant, depicting various subjects, such as animals, nature, landscapes, still life and maritime.

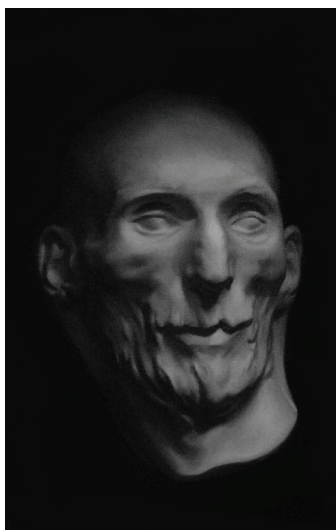


Exhibiting Artists about their Work

Nicholas B. Robinson 'Akademiska Stilleben' Mon, November 23rd to Sun, December 6th

Akademiska Stilleben is an exhibition of still-life and cast paintings by artist Nicholas Benedict Robinson.

The paintings are made with specific consideration to formal elements of the academic style such as the effect of light and space on form. This is Robinson's second solo show and second show at the Signal Arts Centre, Co. Wicklow. Wicklow artist Robinson is a prize-winning Florence Academy of Art, Sweden graduate, Royal Society of Portrait Painters/ Royal Society of Oil Painters/ Hennessy Portrait Prize, and Zurich Portrait Prize exhibitor.



Christmas Fair (Meitheal Art and Craft show)

Mon, December 7th to Thurs, December 24th

Christmas Fair (Meitheal Art & Craft Show)
Due to the difficulties around Government Guidelines it is impossible to proceed with our normal Christmas Fair as it involves too many suppliers arriving in the one day with their products to the Centre.

In an effort to not disappoint too many people we have come up with the idea to use current and past staff and use this as our annual Meitheal with emphasis on crafts and work that are relevant to the season.

Currently it is very difficult to know where we will be and what will be allowed by December! The dates for the Show are Monday 7th to Thursday 24th December. Hope to see you all there.





Signal Book Club 2020

First Tuesday of every month
at 5 pm in the gallery

Tuesday November 3rd 2020 A Month in the Country by JL Carr



In J. L. Carr's deeply charged poetic novel, Tom Birkin, a veteran of the Great War and a broken marriage, arrives in the remote Yorkshire village of Osgodby where he is to restore a recently discovered medieval mural in the local church. Living in the bell tower, surrounded by the resplendent countryside of high summer, and laboring each day to uncover an anonymous

painter's depiction of the apocalypse, Birkin finds that he himself has been restored to a new, and hopeful, attachment to life. But summer ends, and with the work done, Birkin must leave. Now, long after, as he reflects on the passage of time and the power of art, he finds in his memories some consolation for all that has been lost.

Tuesday December 1st 2020 Writers and Lovers by Lily King

Blindsided by her mother's sudden death, and wrecked by a recent love affair, Casey Peabody has arrived in Massachusetts in the summer of 1997 without a plan. Her mail consists of wedding invitations and final notices from debt collectors. A former child golf prodigy, she now waits tables in Harvard Square and rents a tiny, mouldy room at the side of a garage where she works on the novel she's been writing for six years. At thirty-one, Casey is still clutching onto something nearly all her old friends have let go of: the determination to live a creative life. When she falls for two very different men at the same time, her world fractures even more. Casey's fight to fulfill her creative ambitions and balance the conflicting demands of art and life is challenged in ways that push her to the brink.



Writers & Lovers follows Casey--a smart and achingly vulnerable protagonist--in the last days of a long youth, a time when every element of her life comes to a crisis. Written with King's trademark humour, heart, and intelligence, Writers & Lovers is a transfixing novel that explores the terrifying and exhilarating leap between the end of one phase of life and the beginning of another.

The Bray Arts Show

First monday of the Month 8pm at the Martello.



**Closing date for submissions for the next
Newsletter: 27TH Nov 2020**



Signal Arts Centre

1a Albert Avenue,
Bray, Co. Wicklow.

Tel: 01 2762039
Fax: 01 2869982

www.signalartscentre.ie
info@signalartscentre.ie

Gallery Hours

Monday to Friday 10 - 1 and 2 - 5
Saturday and Sunday 10 - 5

Office Hours

Monday to Friday 9 - 1 and 2 - 5



This project is funded
by the Department
of Social Protection