



SIGNAL ARTS NEWSLETTER

Volume 19

April - June 2022

Issue 2



Paula Kearney
'Wild Wet Meadow'



Membership is open to artists and non artists.

For membership queries contact
society@signalartscentre.ie

THE BENEFITS

- Invitation to participate in the annual Signal Arts Society exhibition.
- A printed copy of the quarterly newsletter posted directly to each member.
- **10%** discount on the purchase of artwork in the Signal Arts Centre.
- Reduced commission on sales of your work in the Signal Arts Centre from 25% to 15%.
- **10%** discount on the price of classes run by the Signal Arts Centre.
- Opportunity to have a piece published in the newsletter relating to your work or area of artistic interest.
- Invitations to exhibition openings and other events staged by the Signal Arts Centre.
- **10%** discount when hiring facilities in the Signal Arts Centre including the kiln and the darkroom.
- Opportunity to promote your work through the online members page on the Signal Arts Centre's website.
- **12%** discount on purchases made in Michael Doherty's School Supplies, Bray.
- **10%** discount on purchases made in Craft Framing, Bray.

Content

3

News from Claire, S.A.S. Member's News, Show & Tell, New Staff, Signal Open Call 2022, Signal Arts Centre Submission Call 2023

4

St. Patrick's Day Parade

5

Biddy Scott Interview,
Signal Arts Centre 30th Anniversary Gala

6/7

Exhibition Programme April - June 2022

8

Classical Drawing by Santa Silina,
Dublin Sketchers by Marie-Hélène MHBD

9

The Artist's Way by Kelly Hood,
The Return of Art Classes at Last! by Audrey Kane

10

Exhibiting Artists about their Work:
Signal Art Society Members Exhibition,
Biddy Scott 'The Choice',
Paula Kearney 'Sense of Place'

11

Exhibiting Artists about their Work:
Bray Adult Education Centre 'Annual Exhibition',
Maggie Wright 'Dancing with the Bear'
Little Bray Family Resource Centre
'Food for Thought'

12

Noticeboard

BOARD OF DIRECTORS

Emma Finucane

Trustee Role – **Chairperson**

Sub-Committee – Community Employment
Management Committee

Susie Markey

Trustee Role – **Treasurer**

Sub-Committee – Community Employment
Management Committee

Sara Hanley

Trustee Role – **Secretary**

Sub-Committee – Community Employment
Management Committee

Greg Murray

Trustee Role – **Participant Development Officer**

Sub-Committee – Community Employment
Management Committee

Yanny Petters

Trustee Role – **Membership Development**

Sub-Committee – Signal Arts Society
Committee

Colum O'Neill

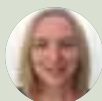
Trustee Role – **Health & Safety**

Sub-Committee – Signal Arts Society
Committee

Yvonne Pettitt

Trustee Role – **Sub Committee**

Sub-Committee – Signal Arts Society
Committee



CEP MANAGEMENT COMMITTEE

Emma Finucane

Susie Markey

Sara Hanley

Colum O'Neill

Greg Murray (PDO)



Eleanor Phillips
Director



CE SUPERVISOR

Claire Flood

ADMIN STAFF

Conor Rafferty

Alva Smith

Geraldine Smith

STAFF ARTISTS

Dan Laffan

Keith Clucas

Donal Smyth

David Crowe

Santa Silina

Lorna Lennon

Jonathan Higgins

Deirdre Ridgway

Margaret Walsh

Don Rorke

Dylan Clucas

Audrey Kane

Andrew Freeland

Kelly Hood

NEWSLETTER TEAM

Chief Editor:

Claire Flood

Layout, Editing, Printing

Deirdre Ridgway

Photography - Deirdre Ridgway

Newsletter Committee:

Claire Flood, Margaret Walsh,

Conor Rafferty, Deirdre

Ridgway, Santa Silina

Signal Arts Society Committee:

Yanny Petters, Conor Rafferty,

Yvonne Pettitt, Erika Tyner,

Myra Jago, Margaret Walsh,

Deirdre Ridgway, Claire Jeffares

OFFICE HOURS

Mon to Fri 9.00 - 1.00 and 2.00 - 5.00

GALLERY HOURS

Monday to Friday 10 - 1 and 2 - 5

Sat and Sun 10 - 5

Tel: 01 2762039

Email: info@signalartscentre.ie

Web: www.signalartscentre.ie

Signal Arts Centre is represented on the

following: Bray Partnership, Wicklow Arts Network,

Bray Chamber of Commerce.

Contact Signal Arts Society: society@signalartscentre.ie

Opinions expressed in this magazine will not always be those of Signal Arts Centre and of course we reserve the right to edit all submissions where necessary.

Signal Arts Centre, 1a Albert Avenue
Bray, Co. Wicklow

Please address all Newsletter
correspondence
to Claire Flood
at Signal Arts Centre

Printed by Central Press, Bray

S.A.S. Member's News

Great to see lots of people are making the most of the great benefits of membership.

Be sure to check it out if you haven't joined us yet!

signalartscentre.ie/sas

Since the lifting of Covid restrictions we are now planning more popup **Meet n' Greet evenings**.

The first one is on the 17th of May at 7pm and will be hosted by Botanical artist Yanny Petters & Myra Jago.

The Society's Art and Sketching Trail has been very successful with the first one on the 17th of September and another on the theme of Lillian Lucy Davidson and Women Artists of Bray on the 6th of February. Biddy Scott was our guide and everyone had a great afternoon. We were joined by the Dublin Sketchers, and despite the rain and wind it was good craic!

The pub quiz was well attended and despite some technical glitches everyone enjoyed this novel joint venue event. The winners were..... **Top of the Pops!**

We are so looking forward to the Gala night celebrating 30 years of Signal. Be sure to get your tickets! There will be amazing prizes too.

signalartscentre.ie/community/signal-30-gala-celebration/

In the meantime, the Signal Society Members Exhibition will be an extravaganza of members work. The entries are flooding in! The opening's on 1st April, so don't be a fool, come and enjoy a great evening with the members.

signalartscentre.ie/exhibitions/signal-arts-society-22nd-annual-exhibition/

Lastly, we'd like to invite our members to submit articles and images to our lovely Society Newsletter to newsletter@signalartscentre.ie.

It's also online so check it out here: signalartscentre.ie under Society Members and we'd love to see more of you getting involved.

Show and Tell at Signal

YANNY PETTERS AND MYRA JAGO MAY 17TH AT 7^{PM}

New Staff



THERE are a fair few cows in Wicklow but for Kelly Hood they provide a constant source of inspiration. Kelly specialises in uniquely Irish images and animal scenes. Her cow paintings in super-realist style, a favourite. Kelly, who attended Meanscoil

na Toirbhirte in Dingle, Co. Kerry before going on to study at the Limerick College of Art & Design and IADT, grew up in Dingle and spent her summers helping to milk the cows on her grandmother Mae's farm. "I eat them, I wear them, and I paint them", Kelly quipped "so I owe them something, don't I?" "In Wicklow, I'm never short of a willing model. I found my first in 2008 and we bonded over a barbed wire fence. I determined then that I would paint her — and one cow led to another. I guess a touch of mad cow ensued."

News from Claire

Hi All,

We have all been working hard on preparation not only for St Patrick's Day but also on the 2 site Quiz! The Quiz was organised by SAS members and many thanks to Audrey Kane and all her family for the huge amount of work that they put in to make this a reality. There were some technical problems on the night but all went well in the end. Great thanks to staff member Don Rorke for his technical knowledge putting the whole thing together.



In this edition we have amazing photos of the St Patrick's Day Parade and I would just like to take this opportunity to thank all the staff in Signal who embraced the challenge. This year, with the staff under pressure with other events, Greg Murray took the challenge on and came up with the theme and was ably assisted by Audrey, Kelly and Santa in particular but everyone always gets involved with the day.

Greg, Santa and Daniel De Chenu applied themselves to sourcing and putting together costumes from reused, recycled and natural materials and these were worn by staff and some of the children from the classes run in Signal, so thank you so much for your input. I am sorry if I did not name everyone that was involved in the day but suffice to say that there are a lot of people that stay in the background but are essential to events such as the parade. Lots of people walked and got involved on a voluntary basis and two of these were Gregg Flood, who gave us his truck and Brian Smith for giving his time by driving said truck.

A HUGE THANK YOU TO ALL THAT MADE ST. PATRICK'S DAY



Claire Flood

SIGNAL OPEN 2022

CLOSING
DATE FOR
SUBMISSIONS:
5PM FRIDAY,
JUNE 24TH,
2022



St Patrick's Day @ Signal Arts Centre 2022



AFTER TWO YEARS OF WAITING, ST. PATRICK'S DAY FESTIVAL AND PARADE ARE BACK. THE CANCELLING OF THE FESTIVAL TWO YEARS BACK WAS THE FIRST TIME TO REALLY UNDERSTAND HOW SERIOUS THIS GLOBAL PANDEMIC WOULD BE ON US ALL. BUT NOW - HERE WE ARE, A HAPPY BUNCH OF WILD FAIRIES, STRAIGHT OUT OF THE LOCKDOWN HIDEAWAY IN THE WOODS.

PEOPLE OF SIGNAL ARTS CENTRE TOOK PART IN ST. PATRICK'S DAY PARADE 2022

THANK YOU, TO ALL INVOLVED!



What is your preferred Medium?

My preferred medium is pen and pencil and two-dimensional drawings.

I'm struggling with painting all together but if I want to paint I tend to draw with oils or I'm very fond of egg tempera but I'm struggling with that hard medium anyway. Egg tempera is what came before our oils were invented, so early medieval or medieval art, early renaissance art or frescoes are basically egg tempera, so instead of using oil as the medium for mixing paint you use egg and it lasts forever.

What is your Inspiration?

My inspiration is just whatever turns up and I don't know that I've exactly had a journey. I was always interested in doing art so I eventually got to Art College in Dun Laoghaire, on an Access course in the middle of the 1990s, that was when I was working so I went in the evening time. That was an interesting experience and then after that I've been doing stuff off and on, but I create whenever the opportunity arises. It was wonderful but it had a very specific idea of what you're supposed to be doing and so drawing was out of fashion at that stage painting in abstract was in, and I got quite interested in why fashions changed so I ended up doing a huge amount of art history and I just finished my last thing on art history so I've been doing more art history than I have art when I'm not working.

Who is your Favorite Artist?

My favourite artist would be Chagall but in art history terms I got very interested in William Connor, who was the Belfast artist so I did an awful lot of bits in and around him but he's not so well known.

What attracts you to your Preferred Medium?

I prefer drawing just because it comes easier to me. I've got a feeling that people tend to be either really good at colour or they like lines and I just like drawing lines even when I use paint I tend to paint lines. Does that make sense? Okay good it kind of makes sense to me but not to a lot of other people.

What Advice can you give on your chosen Medium?

I don't think I'd advise anybody to do anything. I think just enjoy it and try not to take it too seriously, I do get it that people have to make money and have to earn livings and that's okay. Since my retirement I don't take anything too seriously and it is absolute bliss.

I think that everyone should just go whatever way suits them at the moment I'm doing a drawing course which I really like because it's actually gone back to basics so we're looking at measuring the tension between gestural drawing and measuring drawing maybe if I started that a long time ago that would have been helpful because I think it's amazing.

Where is the Space you Create In?

I work from home, I've given over one of the rooms in my house, there's messy art and tidy art so I do my tidy art, egg tempera you have to be tidy you know messy stuff that's okay but to be honest with you with the drawing at the moment I tend to draw which is a bit tight so definitely best done in front of the telly it's just a happy place to be, does that make sense.

Do you have a Particular Process?

I start my process with the lightest possible pencil say a H-pencil and then to get some drama into it go darker and darker. But I mostly work with pens, I use the smallest possible pen I can get, so that would be an .05 and then just draw little lines if there's something nice on the telly you can draw with an .05 forever and ever and ever you get through it, it's good for listening to the radio or something else.

Can you tell us about your coming Exhibition?

My exhibition is going to be slightly different to other shows, when I've showed before it's tended to be landscapes but during Covid I had a lot of time on my hands watching a lot of telly so I ended up getting really interested in two things

basically. I started getting interested in this stone head that is in the national museum it's called the Corleck Head it's a stone which has got three faces on it. So, I kept drawing the stone over and over and over again. As a counter to that I have a thing about drawing feathers so it ended up being a sort of thing between feathers and stones.

So that's why I ended up basing the whole thing on a poem that's called 'The Choice' the poem is about the choice between reality and imagination. That's what the show is basically about and a few other things thrown in, I've got a couple of angels that I found in a medieval thing that I was studying with art history, and they're nice because they're hurling about it's all about the end of the world and like it feels like that just at the moment.

It's going up on the 11th so it'll be opening on the 12th and will run until the *24th of April this year.

**Due to filming going on in the Gallery during Biddys show and with her approval the end date of her show will be *Tuesday 19th April. Biddy is very kindly donating any sales from her show to the Ukraine effort.*

30TH ANNIVERSARY GALA DINNER TICKETS



We would be absolutely delighted to have all our Newsletter readers join us on what promises to be a very special occasion to share your stories and memories and help us to celebrate our anniversary in style.

Should you wish to attend, tickets are priced at €50 per person and can be purchased in the Centre, by phone on 01-2762039 or online at www.signalartscentre.ie

We very much hope to see you all there.



Gallery Opening Hours
Monday / Friday - 10 - 1 / 2-5
Saturday / Sunday - 10 - 5

EXHIBITION PROGRAMME April-June 2022

For more information go to www.signalartcentre.ie



Signal Arts Society 'Signal Arts Society Members Exhibition 2022'

Monday, March 28th
Sunday, April 10th
Opening Reception
Friday, April 1st 7pm – 9pm



Biddy Scott 'The Choice'

Monday, April 11th
Tuesday, April *19th
Opening Reception
Sunday, April 17th 3pm - 5pm



Paula Kearney

'Sense of Place'
Monday, April 25th
Sunday, May 8th
Opening Reception
Friday, April 29th 7pm - 9pm



Bray Adult Education Centre

‘Annual Exhibition’

Monday, May 9th
Sunday, May 22nd

Opening Reception
Friday, May 13th 7pm - 9pm

Maggie Wright

‘Dancing with the Bear’

Monday, May 23rd
Sunday, June 5th

Opening Reception
Sunday, May 29th 3pm – 5pm

Little Bray Family Resource Centre

‘Food for Thought’

Tuesday, June 7th
Sunday, June 18th

Opening Reception
Friday, June 10th 7pm – 9pm



LITTLE BRAY FAMILY RESOURCE AND
DEVELOPMENT CENTRE LTD
ARD CHULAINN, UPPER DARGLE ROAD, BRAY,
CO. WICKLOW
PHONE: (01) 286 7644



Views and Reviews What is Academic Classical Drawing by Santa Silina

Academic or Classical art is a style of drawing, painting and sculpture produced under the influence of European academies of art. Specifically, academic art is the art influenced by the standards of the French Académie des Beaux-Arts starting from the 18th century.

Towards the second part of the 19th century, young artists spent four years in rigorous training as only students who passed an exam and carried a letter of reference from a noted professor of art were accepted at the academy's school, the École des Beaux-Arts. If approved, they would then draw still life compositions and plaster casts of famous classical sculptures. Only after acquiring these skills artists were permitted entrance to classes in which a live model posed.

As modern art and its avant-garde gained more power by the end of the 19th and start of the 20th centuries, academic art was further diminished, and seen as sentimental, clichéd,

conservative, non-innovative, and "style-less." Nowadays, not everyone who wants to work in the arts goes to an official school or academy to learn the principles of drawing, but you should know what these skills can teach you. There are methods how to learn fundamental skills of classical drawing. They include precise rules, exact roadmaps and instructions. Academic drawing helps the artist create an

artwork based on strict rules of visualization and analysis brainwork. And there is the joy of sketching in and outdoors as well!

Academic or Classical drawing is not an easy way into art as you need to practice a lot and to learn new and complicated skills. It is one of the reasons you would not find Classical drawing in lots of modern art colleges and schools.

But Academic or Classical style of drawing and painting is still there, more as a handy tool

of skills and useful base for further explorations in art. Classical drawing can teach you to understand how things are built, what is the easiest way to draw bits and pieces for your new comic book or animation. It can help you to live life more mindful as well. To draw in a classical style using both – your intellect and creativity.

And by the end - you can use the skills as the base, but you can go in the steps of the greatest classical artists of Europe as well.



Views and Reviews Dublin Sketchers by Marie-Hélène MHBD

Hi everyone,
A few of us from Dublin Sketchers joined your sketchwalk on Sunday 4th February and really enjoyed it. Dublin Sketchers get together every Sunday afternoon in Dublin to sketch. We go to a different place each week. We start sketching from 2pm and meet at 4pm for a drink and chat. We are part of the global Urban Sketchers community.

Dublin Sketchers was set up in 2008 by Sarah O'Reilly who enjoyed sketching and thought it would be nice to do it with other people. The first time Dublin Sketchers got together was 30th March 2008. It's been going every Sunday since, with only breaks for Xmas and Easter. It keeps going because it is simple and welcoming and everyone helps out. In November 2017 we joined Urban Sketchers, a worldwide community of artists who sketch on location from direct observation, telling the story of our surroundings, the

places we live and where we travel. We show the world, one drawing at a time.

We kept sketching throughout the pandemic, inspiring and supporting each other remotely. We are so happy to be back meeting and sketching in person again.

You will find us at www.urbansketchers.com and on the streets of Dublin.



It's hard to be sceptical about the practical success of *The Artist's Way* by Julia Cameron.

It isn't just that the book has sold so many copies since Cameron ignored her agent's advice, it's that it has generated significant results. Musician Alicia Keys and writers such as Patricia Cornwell have acknowledged the help that the book has given them.

There's also a quote on the back from the multimillion-selling author Elizabeth Gilbert: "Without *The Artist's Way* there would have been no 'Eat, Pray, Love.'"

During Lockdown 2020, I had learned about the Artist Way workshop through a Facebook ad and the facilitator (Aideen Lyster) had a competition on facebook and guess what, I luckily won a spot!

This book had been sitting on my bookshelf for 20 years

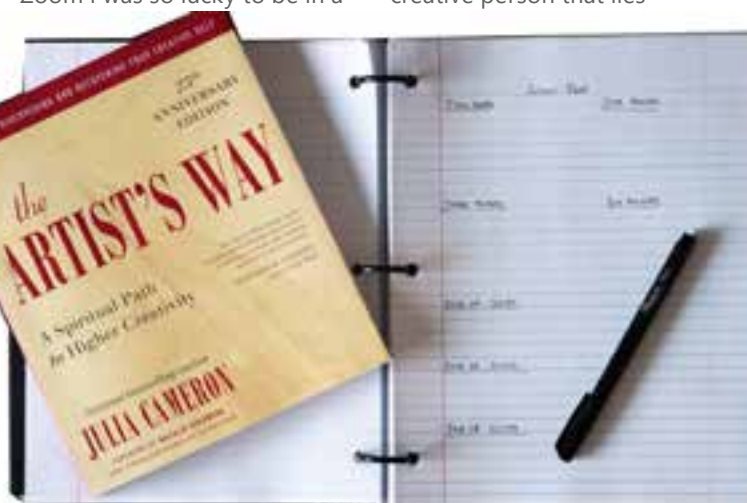
(since Art college!) always waiting patiently for me to read and engage with it.

Now suddenly it would be taking me on a journey via Zoom I was so lucky to be in a

to explore my inner creative artist. I used this time to create an oasis of peace and calm for myself. I re-discovered the playful, joyous, creative person that lies

trapped indoors, restless, feeling claustrophobic, ... feeling that events were beyond our control. But what I learned from *The Artist's Way* is that what we do have control over is taking the pen to the page. I diligently undertook the exercises in *The Artist's Way* as a method of gaining confidence, security, enthusiasm and a little bit of frivolity.

The Artist's Way is a 12 week recovery program, to meet and to know your inner self. A life changing book! I've never read anything like it. It's not just a book it's a path, an experience and a powerful way to discover yourself.



group with a wonderful group of 10 women who spent 12 weeks bravely exploring their creativity, cultivating self-care and some making significant changes in their lives.

On this course I had the opportunity, over 12 weeks,

underneath the responsible and busy self that takes you through the day.

I used Julia Cameron's book as the framework to support me in this process.

During Covid many of us were

I would personally consider this a life-changing creative tool. I have continued to utilise this method for the last two years as a tool to support, the mental, spiritual, creative and artistic aspects of my life. I highly recommend it!

Views and Reviews

THE RETURN OF ART CLASSES AT LAST!

by Audrey Kane

After a long hiatus the art classes have returned! It has been quite a while since we have all got together to get the creative juices back in business!

I have really enjoyed reacquainting myself with the glories of ending up with paint and glitter all over the workroom! At present we have wonderful students from Sunbeam House, Rehab and Carmona services.

The past few months have seen students getting busy with Christmas and Valentine's day cards, posters and decorations. At the moment we have all been working on various projects for St Patrick's Day. We have used up a large supply of green card and paper while making greeting cards and flags, I will definitely need to order the green, white and orange paint on the supplies list!

It is wonderful to have the classes back not only for the enjoyment of working on creative projects but also to have the chance to engage with

students and find out what they have been up to and if there is anything particular they would like to work on.

I am really looking forward to the coming months and hopefully {weather permitting!} we will get a chance to work outside. I have definitely missed our musical students and always enjoy the singalong.....thank heavens I'm a Westlife fan....



Exhibiting Artists about their Work

Signal Arts Society

'Annual Exhibition'

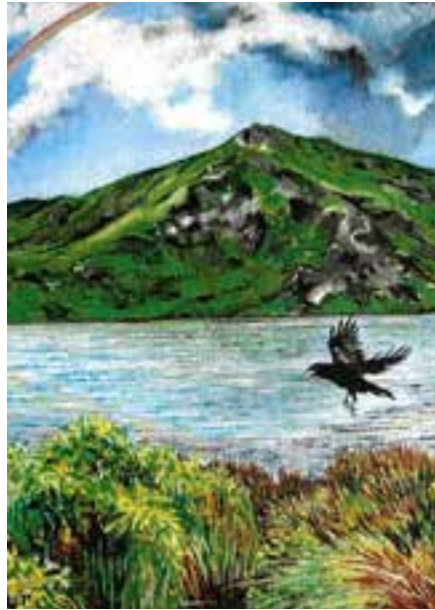
Monday, March 28th
Sunday, April 10th

Signal Arts Centre is pleased to present the 22nd Annual Exhibition of works by members of the Signal Arts Society.

This exhibition is a showcase for members of the Signal Arts Society and, being a group show, includes a diverse range of content, a varied selection of mediums and always something to delight even the most discerning of palettes.

The Signal Arts Society was launched in 2001 and is affiliated with Signal Arts Centre. The Society consists of artists working in many different arts practices, however membership is not exclusive to artists - anybody with an interest in the arts can join.

The Society offers a range of facilities and discounts to members. For more information on Signal Arts Society go to www.signalartscentre.ie and click on the Society's tab. Alternatively the Society may be contacted through Signal Arts Centre.



Biddy Scott

'The Choice'

-Due to filming taking place in Signal Biddy Scott's show will come down on Tuesday 19th April -

Monday, April 11th
Tuesday, April 19th

This exhibition of pictures, drawn in a variety of medium, is called 'The Choice'. This choice is about the experience and visualization of reality; about how we prioritise the significance of fact or fantasy in how we interpret the processes and possibilities of the world around us...



In some of these pictures the materiality of feathers is contrasted with the fantasy of flight. In others stones have faces... What would you choose?

If one must choose
Between dream world and day world
Between the factual that dissolves in thought
Or fantasies that harden into shapes
More bright than bronze
I will accept the latter and deny
All that projects upon the eye
Inconsequential forms

In sleep, we meet ourselves
Not as we are.
But as we might have been
If those we chose as parents were more wise,
And those who taught us spoke like Socrates.
Here we are free
To take that other path and still achieve
The multicoloured garments of desire.

Paula Kearney

'Sense of Place'

Monday, April 25th
Sunday, May 8th



Paula Kearney studied Fine Art Painting in the College of Marketing and Design (D.I.T.) before graduating from the National College of Art and Design (N.C.A.D.) in the late 1980s. She has travelled extensively; lecturing in Life Drawing and Painting in Singapore while taking part in numerous exhibitions and group shows throughout her time in Dubai. Now settled back in Wicklow, Paula's work has shifted direction from focusing on figurative images to an exploration of landscape. The artist brings a new series of paintings to the Signal Arts Centre, which explores the landscape of the Murrough in Co. Wicklow. The land there is a nature reserve, full of migratory

birds. It is home to marshlands and salt-water lakes, which stretch along the coastline for 15kms from Kilcoole to Wicklow town. This is an area that the artist has a strong association with, as it is where she lives and walks regularly.

The paintings that Paula chose for this exhibition are ones that she considers to convey the mood that this place instils in her. They are dark and brooding but always have a hint of light breaking through. The backgrounds are abstract and vast while the foregrounds are more immediate and real, with the dominant entangled grasses and the tall wild foliage. The paintings marry the two mediums of oil paint and graphite.



Exhibiting Artists about their Work

Bray Adult Education Centre 'Annual Exhibition'

Monday, May 9th
Sunday, May 22nd

The Signal Arts Centre hosts Bray Adult Education Centre's annual exhibition, a stunning mix of artwork created by first- and second-year art groups "The Art Within". Collection of work developed and created by students discovering their personal journeys through various art disciplines. The artwork captures a multi-faceted array of inspired themes, as diverse in nature as the artists themselves. Using the Art and Design elements the students explore their own individual, creative voice and interpretations of self-expression. The work embraces an exciting array of mixed media pieces, including Mosaics, Printmaking, Painting, Drawing, Textile Art, Felt Making, Textile Printing and Ceramic, Wood, Sculpture and Mixed media. The

use of colour, texture and surface pattern play an integral role in the individual's use of expression. Most of our students come from Bray and the surrounding areas, most exhibitors are novices and have had little or no exposure to art and design. Their work embraces their courage to learn, to discover and to explore new things. We are very excited to once again exhibit student's work in the public arena.



Maggie Wright

'Dancing with the Bear'

Monday, May 23rd
Sunday, June 5th



Maggie Wright is a figurative and portrait artist originally from Belfast. Graduating from the University of Ulster with a BA honours degree in Fine Art; Wright has been based in Dublin for the past number of years. Her work is housed in both public and private collections and she has exhibited widely in the Royal Hibernian Academy, the Royal Ulster Academy, the Éigse Arts Festival and the Boyle Arts Festival. A member of the Dublin Painting and Sketching Club Wright has been drawing with the RHA self-directed drawing group since 2010. She has long been intrigued by the interactions of all living things and believes that in a lot of our waking hours we are all engaged in a form of dance. This she believes to be a primal commonality shared by all of us across all cultures. Wright's current exhibition entitled 'Dancing with the Bear draws heavily on this belief. The title was inspired by a piece of music produced by A.P.Kaczmarek for the film Finding Neverland. The theme is really about engagement and acceptance and so she invites you to join her in 'Dancing with the Bear'.



Little Bray Family Resource Centre 'Food for Thought'

Tuesday, June 7th
Sunday, June 18th

Food for Thought is a collection of written pieces by the Little Bray Creative Writers Group who meet regularly in the Resource Centre in Fassaroe. They reflect the multiplicity of talents in the group plus age and experience. Highly talented, these writers have gained the wisdom of mature years and bring their gems of creativity and experience to you.

The exhibition will also feature the artwork of our Porcelain Painters Group who meet weekly in the resource centre. They have been decorating pieces of porcelain (can be anything from a plate to a teapot or anything else) for many years and enjoy each other's company and the peace of leaving the world outside the door to bring out their inner creativity.

You will leave with plenty of 'Food for Thought'.

LITTLE BRAY FAMILY RESOURCE AND DEVELOPMENT CENTRE LTD
ARD CHULAINN, UPPER DARGLE ROAD, BRAY, CO. WICKLOW
PHONE: (01) 286 7644





Signal Book Club 2022

First Tuesday of every month
at 5 pm in the gallery

Tuesday 7th April



We were Young by Niamh Campbell

Cormac is a photographer. Approaching forty and still single, he suddenly finds himself 'the leftover man'. Through talent and charm, he has escaped small town life and a haunted family. But now his peers are all getting divorced, dying, or buying trampolines in the suburbs. Cormac is dating former students, staying out all night and receiving boilerplate rejection

emails for his work, propped up by a constellation of the women and ex-lovers in his life.

In the last weeks of the year, Cormac meets Caroline, an ambitious young dancer, and embarks on a miniature odyssey of intimacy. Simultaneously, he must take responsibility for his married brother, whose mid-life crisis forces them both to reckon with a death in the family that hangs over those left behind.

Set in Dublin, a city built on burial pits, *We Were Young* is a dazzlingly clever, deeply enjoyable novel from a Sunday Times Short Story Award-Winning author.

Tuesday 3rd May



Balzac and the Little Chinese Seamstress by Dai Sijie

This is a moving novel in which two young Chinese men, who have been sent to a mountain village by the communist regime to be re-educated, discover love and Western literature. This novel is simultaneously a testimony of the excesses of the regime, a story of an initiation, and a tale of friendship and love.

Tuesday 7th June



Olive, Again by Elizabeth Strout

Olive, Again picks up a few weeks after the last story in *Olive Kitteridge*, where she starts spending time with Jack Kennison. They don't speak for a while because Olive has turned off her answering machine, but eventually they touch base. Over the course of the book, they marry, and eight years later Jack passes away in his sleep. Meanwhile, Olive comes to the realization that she was not a very good mother to

Christopher. However, Olive and Christopher slowly mend their relationship. Towards the end of the book, Olive has a heart attack, and Christopher diligently goes to see her. He arranges for her care and eventually helps to make arrangements for her in an assisted living home. At the assisted living home, Olive meets a friend, Isabelle, with a similar background as Olive. At the end of the book, Olive reflects on how lucky she's been and the love she's had, even if she does not know why they love her.



POETRY IN THE PARK
1st Sunday of the Month 12pm
People's Park Bray Co. Wicklow

All Welcome



SIGNAL SKETCHERS
Last Sunday of the Month
Meet at Signal 2pm

**CLOSING DATE FOR SUBMISSIONS FOR
THE NEXT NEWSLETTER
7TH JUNE 2022**

The Bray Arts Show

First monday of the Month at 8pm

at the **Martello Hotel**

check website for details

www.brayarts.com



Signal Arts Centre

1a Albert Avenue,
Bray, Co. Wicklow.

Tel: 01 2762039

www.signalartscentre.ie

info@signalartscentre.ie

Gallery Hours

Monday to Friday 10 - 1 and 2 - 5
Saturday and Sunday 10 - 5

Office Hours

Monday to Friday 9 - 1 and 2 - 5



This project is funded by the
Department of Social Protection